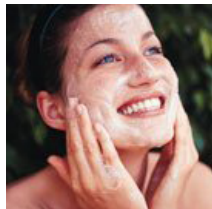
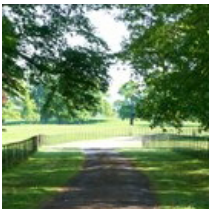


**kate & tom's**

*Extraordinary holidays, celebrations & adventures*



## Enjoying your stay at The Court House

*Everything you need to get the most out of your stay*

# Contents

---

Arrival . . . . .	.3
<i>Where We Are</i> . . . . .	3
<i>Check in and check out</i> . . . . .	3
Getting to us . . . . .	.4
<i>Directions to The Court House</i> . . . . .	4
Cooking & dining - chef services. . . . .	.5
Cooking & dining - great places to eat & drink . . . . .	.7
Cooking & dining - shopping for food . . . . .	.9
Things to do . . . . .	10
Top things to do with children. . . . .	11
Useful information . . . . .	12
Guest reviews . . . . .	14

# Arrival

---

## Where We Are

Property Name: The Court House  
Address: The Court House, Pale Lane, Painswick, Stroud  
County: Gloucestershire  
Postcode: GL6 6QE  
Phone number at the house: 01452 814849

## Check in and check out

Check in time: 4pm  
Contact name for check in: Su or Peter  
Contact number for check in: 07920 804344 and 07786331872

Check out time for 2 night weekend booking: 4pm on Sunday  
Check out time for 3 night weekend booking: 10am  
Check out time for 7 night week bookings: 10am

# Getting to us

---

The best postcode to use with Satnav is:  
Nearest Train station and distance:

GL6 6QE  
Stroud or Stonehouse, around 3 miles away

## **Directions to The Court House**

The Court House lies within 50 metres of a beautiful church in the centre of Painswick. The gates cannot be missed; on arrival please press the buzzer on the main gate so that we can let you in.

### **From Cheltenham**

Take the road towards Stroud until you reach Painswick. Head for the Church, and take a left just after the second set of traffic lights in the village. Follow the road around and you will see our large set of double gates in front.

### **From London**

Take the M4 to Junction 15 at Swindon and then follow the A419 towards Gloucester and Cheltenham. Just before Birdlip turn left and take the road

# Cooking & dining - chef services

---

You'll find our top recommendations below. If you do discover any other gems please do let us know and we will share them with other guests visiting the property.

## **Catering and Drop-off meal service**

Highly recommended by our guests, James Benson is a former Claridge's and Lygon Arms chef who uses fresh, Cotswolds produce. To add an extra special touch to your break, James can be your Chef for a night cooking a three course meal or provide you with superb, ready to go meals or barbecue dishes dropped off for your convenience.

If you require James, please book as soon as possible after making your booking. James' website is [www.bensonscateringltd.co.uk](http://www.bensonscateringltd.co.uk) and he is always happy to discuss your catering needs with you. His phone number is 01684 854406, mobile 07807 453308.

## **Gluts & Gluttony**

Email Kathy: [kathy@glutsandgluttony.com](mailto:kathy@glutsandgluttony.com), Tel: 07805 262667

Email Mandy: [mandy@glutsandgluttony.com](mailto:mandy@glutsandgluttony.com), Tel: 07789 988984

[www.glutsandgluttony.com](http://www.glutsandgluttony.com)

Armed with enough ingredients and gadgetry to fuel a small army, culinary extraordinaires Kathy and Mandy can swoop into your holiday home and cook up a feast that's perfect for your special celebrations. Every menu is different and designed specifically to your requirements, using the best seasonal produce from around the Cotswolds. Kathy and Mandy also offer bespoke private cookery classes for those wanting to sharpen their skills; lessons can range from teaching children about healthy, tasty cooking to making the perfect afternoon tea. On top of that, Gluts & Gluttony can deliver pre-prepared homely meals that can be stored in the freezer and taken out whenever you get peckish! Be sure to contact them well in advance as they are a popular choice.

## **Love Bites**

[www.lovebites.events](http://www.lovebites.events)

Kelly: 07774 725187

Rachel 07979 690163

[indulge@lovebites.events](mailto:indulge@lovebites.events)

An excellent catering company that provide adventurous, tasty canapés for any event, be it a small family gathering or birthday party. Contact them soon as they also get booked up quickly.

## **Local produce that the area is renowned for**

As we're sure you're well aware, the Cotswolds is a foodie's paradise: literally everything and anything is grown and raised on these vast, green expanses. The buying and selling of organic foods has long been a tradition within these villages, and the successes of the Cotswolds farmers markets has now led to a national trend in 'localised ethical shopping', a movement spearheaded by the Prince of Wales, who has his own market shop in Tetbury, and firmly believes strong local markets creates a strong local economy and a vibrant society.

Be sure to check our 'Top Places to Visit' section to find some examples of places that produce some of the UK's best food.

# Cooking & Dining - chef services

---

## Gloucester Old Spot

The Gloucestershire Old Spots (also “Gloucester, Gloucester Old Spot, Gloucestershire Old Spot” or simply ‘Old Spots’ is an English breed of pig which is predominantly white with black spots. It is named after the county of Gloucestershire. The Gloucestershire Old Spots pig is known for its docility, intelligence, and profligacy.

The Gloucester Old Spot Public House in Cheltenham specialise in the rare breed pork.

## Cheese - Double Gloucester

Gloucester is a traditional, semi-hard cheese which has been made in Gloucestershire, England, since the 16th century, at one time made only with the milk of the once nearly extinct Gloucester cattle.

There are two types of Gloucester cheese: Single and Double; both are traditionally made from milk from Gloucestershire breed cows farmed within the English county of Gloucestershire.

# Cooking & dining - great places to eat & drink

---

There are many excellent dining places nearby and we have listed a small sample below. The best food locally is found in the excellent Cotswolds dining pubs but if you want to travel a little further there are some award-winning restaurants to choose from.

## Nearest pub

### Royal Oak (0.1 miles/2 mins)

St Mary's Street, Painswick, GL6 6QG 01452 813129

[www.royaloakpainswick.co.uk](http://www.royaloakpainswick.co.uk)

A big welcome to the Royal Oak in Painswick from your hosts Gill and Mike Brickell. A traditional country pub offering good, real ales, ciders and lagers and traditional home cooked food. Painswick is exactly on the Cotswold Way National Trail and they welcome walkers and hikers to join us for tea, coffee, snacks or a main meal on their journey.

## Pubs

*Always advisable to book in advance!*

### The Falcon Inn New Street (0.1 miles/3 mins)

Painswick, Stroud, GL6 6UN 01452 814222

[www.falconpainswick.co.uk/index.html](http://www.falconpainswick.co.uk/index.html)

Dating back to 1554 The Falcon is a small, select hotel and restaurant situated in the centre of the beautiful Cotswold village of Painswick. Overlooking the historic village church and its famous 99 clipped yew trees, the Falcon hotel offers great hospitality with a warm welcome.

### The Royal William (2.3 miles/6 mins)

Cheltenham Road, Cranham, Painsick, GL6 6TT 01452 813650

[www.royalwilliam.co.uk/80040/info.php?p=1](http://www.royalwilliam.co.uk/80040/info.php?p=1)

The Royal William is situated on the outskirts of Cranham Village on the Cheltenham Road (A46) between Brockworth and Painswick. Once a Brewers Fayre, it is now a privately owned business offering a wide selection of fresh home cooked food and daily specials. It sources some of its ingredients from local suppliers such as Cam Butchers, Woefulane Dairy and Winstones Ice Cream.

### The Edgemoor Inn (1.5 miles/6 mins)

Gloucester Road, Edge, GL6 6ND 01452 813576

[www.edgemoor-inn.com/](http://www.edgemoor-inn.com/)

The Edgemoor Inn is in the village of Edge, overlooking the beautiful, picturesque Painswick Valley. The late 19th century Inn, constructed from Cotswold stone, has picture style windows and is well known for its pretty panoramic views. The property boasts an extensive terraced patio overlooking Painswick and the surrounding countryside.

# Cooking & Dining - great places to eat and drink

---

## Restaurants

*Our advice is always book well in advance!*

### **Oliva's** (1.4 miles/7 mins)

Friday Street, Painswick, Stroud, Painswick GL6 6QJ 01452 814774

<http://olivas.moonfruit.com/>

### **The Bistro at Cardynham House** (0.1 miles/2 mins)

Tibbiwell Street, Painswick GL6 6XX, 01452 814006

<http://cardynham.co.uk/>

### **Cotswolds88 Hotel**

Kempst Lane, Painswick GL6 6YB 01452 813688

<http://www.cotswolds88hotel.co.uk/>

### **Prithvi** (10.6 miles/25 mins)

37 Bath Rd, Cheltenham GL53 7HG 01242 226229

<http://prithvirestaurant.com/>

A statement of serenity and calm. A refined and sophisticated approach to Indian dining in an intimate and relaxed surrounding.

## Best places to eat out with children

For places to eat out with children you may need to travel further afield than Painswick, either to Cheltenham or Stroud. There are many great restaurants in the Gloucestershire area.

### **Daphne Restaurant** (10.5 miles/24 mins)

2 Crescent Place, Cheltenham GL50 3PG 01242 577299

<http://www.daphnerestaurant.com/>

### **House-in-the-Tree** (12 miles/23 mins)

Withybridge Lane | Boddington, Cheltenham GL51 0TQ 01242 680241

## Best Takeaways

### **Award Winning Indian Takeaway**

Bengali Balti 01453 702577

### **Chinese Takeaway**

Peking House 01452 525729



# Cooking & dining - shopping for food

---

## **Best local supermarket**

### **Morrisons**

George St, Nailsworth 01453 839474  
[www.morrisons.co.uk](http://www.morrisons.co.uk)

## **Butcher & Online Food Store**

### **Sheepscombe Meat**

Beech Farm, Beeches Lane Sheepscombe, GL67QZ 01452 812836 or 07866 520636  
[info@sheepscombemeat.co.uk](mailto:info@sheepscombemeat.co.uk)

## **Wine Merchant**

### **Majestic Wine** (7.5 miles/25 mins)

The Lighthouse, Westgate Retail Park, Gloucester 01452 303949

### **Laithwaites Wine** (7 miles/17 mins)

Gloucester Business Park, 7100 Hurricane Rd, Brockworth, Gloucester GL3 4AQ 01452 651970

## **Major supermarket online orders**

### **Waitrose**

[www.waitrose.com](http://www.waitrose.com)

### **Ocado**

[www.ocado.com](http://www.ocado.com)

### **Tesco**

[www.tesco.com](http://www.tesco.com)

# Things to do

---

Our top recommendations for activities and pampering are below.

## **Clay pigeon shooting**

**Lady's Wood Shooting School**, Mapleridge Lane, Horton, Chipping Sodbury, South Gloucestershire, BS37 6PW  
Family groups welcome. Tel: 01454 294456  
[www.ladyswood.co.uk](http://www.ladyswood.co.uk)

## **Paint Balling**

**Paint Ball Raiders** (3.6 miles/10 mins)  
Range Farm. Upton Ln, Brookthorpe, Gloucester GL4 0UT 01452 306117  
<http://paintball-raiders.co.uk/>

## **Horse riding**

**Tumpy Green Equestrian Centre**, Tumpy Green Lane, Cam, Dursley Glos GL11 5HZ Tel: 01453 899002  
Summer House Equestrian Centre, Bath Road, Hardwicke, Gloucester GL2 2RG, Tel: 01452 720288.  
[www.summerhouseec.co.uk](http://www.summerhouseec.co.uk)

## **Adventure sports**

**Chepstow Outdoor Activities**, Tump Farm, Chepstow NP16 7HN Tel: 01291 629 901  
[www.chepstowoutdooractivities.com](http://www.chepstowoutdooractivities.com)

## **Golf**

There are good local golf clubs offering Pay and Play at Wootton, Chipping Sodbury and Stinchcombe. For more challenging courses a little further afield try the St Pierre Golf Club at Chepstow or the Ryder Cup venue Celtic Manor.

## **Pampering**

**All Dolled Up Beauty**, Stone, Glos. Tel: 01454 261702 Mobile: 07581 586979 [www.alldolledupbeauty.org](http://www.alldolledupbeauty.org)

**My Personal Sanctuary**. Tel: 01625 540 557 or email: [enquiries@mypersonalsanctuary.co.uk](mailto:enquiries@mypersonalsanctuary.co.uk). [www.mypersonalsanctuary.co.uk](http://www.mypersonalsanctuary.co.uk)

# Top things to do with children

---

There are many great places to go out with children in the Cotswolds and we've listed our top recommendations below. There is lots to see at many of these places so be prepared for a long day out!

## **Cattle Country Adventure Park**

Berkeley Heath Farm, Berkeley, Glos GL13 9EW Tel: 01453 810510

Soft play area, splash pool, boating lake, American bison

[www.cattlecountry.co.uk](http://www.cattlecountry.co.uk)

## **St Augustine's Farm Park**

High Street, Arlingham, Glos GL2 7JN Tel: 01452 740277

[www.staugustinesfarm.co.uk](http://www.staugustinesfarm.co.uk)

## **Wildfowl and Wetlands Trust, Slimbridge**

Bowditch, Slimbridge, Glos GL2 7BT Tel: 01453 891900

[www.wwt.org.uk](http://www.wwt.org.uk)

See wild birds from all over the world at this wonderful centre.

## **Bristol Zoo**

Bristol Zoo Gardens, Clifton, Bristol BS8 3HA Tel: 0117 974 7399

[www.bristolzoo.org.uk](http://www.bristolzoo.org.uk)

## **Prinknash Bird and Deer Park**

Prinknash, Cranham, Gloucester GL4 8EX Tel: 01452 812727

[www.thebirdpark.com/](http://www.thebirdpark.com/)

## **Gloucester Ski and Snowboard Centre**

Matson Ln, Robinswood Hill, Gloucester GL4 6EA 01452 501438

[www.gloucesterski.com/default.aspx](http://www.gloucesterski.com/default.aspx)

## **The Corinium Museum**

Park St, Cirencester, Gloucestershire GL7 2BX 01285 655611

[www.coriniummuseum.org/](http://www.coriniummuseum.org/)

# Useful information

---

## The Court House at a Glance

### Bedrooms and Bathrooms

- Sleeps up to 22 guests in 11 bedrooms
- Seven double rooms, five of which have en suite bathrooms
- One twin room with an en suite bathroom
- One shared bathroom
- Downstairs WC

### Cooking and Dining

- Dining table seats 20 comfortably
- Fantastic chef available for a special meal or throughout the weekend
- Drop-off meals available
- Fully equipped kitchen with breakfast table
- One double oven and one single oven
- Gas hob and induction hob
- Microwave
- Dishwasher
- Two barbecues, one coal and one gas (fuel not included)
- Tables and chairs on terrace
- Walk to a good pub, two minutes away
- Good dining nearby
- Online deliveries

### Things to Do Inside

- Large 3D TV
- Sky TV
- DVD player and DVDs
- iPod dock
- Games room
- Full-length snooker table
- Bar
- Fully equipped gym
- Wine cellar
- Wi-fi
- Computer for guests' use
- Library

### Things to Do Outside

- Four acres of gardens
- Hot tub
- Outdoor bar
- Fire pit
- Swings

## Useful information

---

- Footballs
- Outdoor games

### House Restrictions

- Noise policy in place
- Suitable for stag parties
- Suitable for hen parties

### What's Included

- Linen
- Towels
- Welcome hamper
- Utilities

# Guest reviews

---

"Painswick in the Cotswolds is restyling itself as the London fashion set's hip country outpost" - *Anna Tyzack*,  
The Telegraph

"Each room tells a tale of its own. It's a house full of history, with everything you could want for." - *Maria*