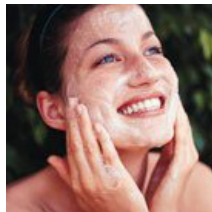
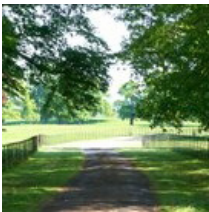


kate & tom's

Extraordinary holidays, celebrations & adventures



**Enjoying your stay at
Fell Cottage**

Everything you need to get the most out of your stay

Contents

Arrival	3
<i>Where We Are</i>	3
<i>Check in and check out</i>	3
Cooking & dining - chef services.	5
Cooking & dining - great places to eat & drink	6
Cooking & Dining - Shopping for Food	10
Things to do - activities and pampering	11
Top things to do with children.	14
Top places to visit and shop nearby	16
Useful information	18

Arrival

Where We Are

Property Name: Fell Cottage
Address: Wythburn
at Blencowe,
Blencowe Near Greystoke,
County: Cumbria
Postcode: CA11 0DF
Phone number at the house: 01768 800 214

Check in and check out

Check in time: 4pm
Contact name for check in: Jilly Musgrave
Contact number for check in: 01768 898 573 / 07732 167 444
Check out time for 2 night weekend booking: 4pm Sunday
Check out time for 3 night weekend booking: 10am Monday
Check out time for 7 night week bookings: 10am Friday

The best postcode to use with Satnav is: CA11 0DF

Nearest Train station and distance: Penrith, a 13 minute drive

The nearest airport is: Carlisle

Getting to Us

The best postcode to use with Satnav is: CA11 0DF

Nearest Train station and distance: Penrith, a 13 minute drive

Directions:

From the M6

Take M6 to A66 in Cumbria. Take exit 40 from M6 to Penrith / Workington / Brough

Continue on A66

At the roundabout, continue straight onto A66

At the roundabout, take the 3rd exit and stay on A66

Turn right onto Newbiggin

Continue straight

Turn left

Take the 1st left

Slight left

Turn right

Destination is on the left

Cooking & dining - chef services

You'll find our top recommendations below. If you do discover any other gems please do let us know and we will share them with other guests visiting the property.

Drop-off meal service

Purple Sage

Whether it's a sophisticated luxury banquet for that dream wedding, simple good food for a party or event, or speciality items such as a hog roast, Purple Sage Catering provides a unique service using local producers, suppliers and home-grown seasonal produce.

01768 895 555 | www.catering4cumbria.co.uk

Sarah Ecroyd Catering

As a specialist events and wedding caterer in the Penrith and Eden Valley area, Sara Ecroyd believes that food should 'speak' of this place and as such her menus include many local and seasonal ingredients celebrating the Cumbrian countryside.

016974 72591 | events@lowhousearmathwaite.co.uk

Lynn Hilditch

Lynn Hilditch provides delicious home-cooked Cumbrian specialities straight from her kitchen. Lynn prepares her meals at home and then comes with her team to the property to serve, clean up afterwards and leave you relaxing in the dining room. Guest reviews following her meals have been absolutely great, as seen on Trip Advisor.

01768 840 923 / 07775733608 | lynnhilditchcatering.co.uk | lynnbakes62@gmail.com

Local produce that the area is renowned for

Cumbria is a region blessed by a rich heritage and outstanding natural beauty and is home to a vibrant business community who've built a reputation for quality and excellence. Known for its meat products by and large, such as Cumberland sausage, which comes coiled like a rope instead of links and sometimes sold by length, or Cumberland Ham. A number of dairy farms produce their own cheese. An old custom saw Cumberland rum butter served with oatcakes to celebrate the birth of a baby.

Cooking & dining - great places to eat & drink

Nearest pub

Old Boot and Shoe Pub, Greystoke

01768 483 343

Open all day (B&B) Pub bar from 11:00 am – till late

Lunch 12:00 – 3:00, Dinner 6:00 – 9:00 (reservations recommended),

Pubs

Horse and Farrier Inn, Threlkeld Near Keswick CA12 4SQ

01768 779 688

Worth the drive, the owner's favourite pub in the local area. Jilly's recommendation.

Sportsman Inn, Troutbeck, Lake District CA11 0SG

01768 483 231

Near Whitbarrow, good walking nearby, great Trip Advisor reviews.

Horse and Farrier Inn, Dacre, Lake District CA11 0HL,

01768 486 541

Great atmosphere, cosy, surrounded by walks. 10:00 am – 11 pm

Askham Hall Gardens, Café and Restaurant, Askham, Penrith, CA10 2PF

Awarded 'Superior Quality' by Cumbria Tourism April 2014.

Restaurant open for dinner to non-residents 7pm - 9:30pm, reservations required.

01931 712 350

Café and gardens, open Sun-Fri 10am – 5pm. Not open on Saturdays.

01931 712 348

Excellent Pizzas from wood-fired oven served at lunch Wed – Fri and Sun only.

Both the restaurant and café use locally sourced ingredients from the gardens, surrounding farms and woodlands estates.

Cooking & dining - great places to eat & drink

Cross Keys Inn, Carleton Village, Penrith CA11 8TP
01768 865 588

English country pub with quality food, beers and wine and excellent service.

Opening times Mon – Fri 12:00 – 3:00pm, 5:00pm – 12:00am
(Food 12:00 – 2:30pm and 5:30 – 9:00pm)
Sat & Sun 12:00pm – 01:00am (Food 12:00 – 2:30pm and 5:30 – 9:00pm)

George and Dragon, Clifton CA10 2ER
01768 865 381

Reservations recommended for dinner. All produce sourced on the Lowther Estate. Winner Taste of Cumbria 2011, Alastair Sawday Local Produce Award.

The Lounge Hotel and Bar, Mitre House, King Street, Penrith, CA11 7AJ
01768 866 395

Hours: Monday – Saturday 9:00 am till late, Sunday from 11:30 am

Moo Bar, (an Independent cask ale and world beer bar) 52, King Street, Penrith, CA11 7AY
01768 606 637.

Hours 12:00pm – 12:30am.

Restaurants

The Townhouse, High Street, Amberley, Arundel, West Sussex BN18 9AJ (2.5 miles away/7 minute drive)
01903 883847

Stunning architecture set this delightful hotel apart. Situated in a premier position opposite Arundel Castle. A great location for a few days break and a fine dining restaurant. The Townhouse has also been recommended in The Michelin Guide since 2008.

www.thetownhouse.co.uk/cmspages/index.php

The Bay Tree, 19A-21 Tarrant Street, Arundel BN18 9DG (2.6 miles away/7 minute drive)
01903 883679

They serve a contemporary European menu using only the finest and freshest ingredients in a beautiful setting, a 16th century timber framed building with an elegant and calming cream and pale green decor. Diners can relax in the stylish interior or on our pretty sun dappled terrace.

www.thebaytreearundel.co.uk

Cooking & dining - great places to eat & drink

Butlers Restaurant, 25 Tarrant Street, Arundel, West Sussex BN18 9DG (2.6 miles away/7 minute drive)
01903 882222

A family run restaurant & bar, focusing on serving delicious homemade food along with friendly warm service & value for money. Come and soak up the atmosphere of Butlers, whether it be for a glass of wine, a continental beer, cappuccino, a relaxed lunch or the buzz of the restaurant at night for a dinner with us, we are sure you'll enjoy your time spent here.
www.butlersarundel.co.uk

Pappardelle Ristorante, 41 High Street, Arundel, West Sussex BN18 9AG (2.9 miles away/8 minute drive)
01903 88202 4/5

Pappardelle Ristorante is the longest running family owned traditional Italian restaurant in Arundel. The restaurant is a traditional fine dining Italian Ristorante with an intimate atmosphere, waiter service at its 11 tables, open lunchtime and evening but closed on Sunday. Booking is recommended.
www.pappardelle.co.uk

Burpham Country House, The Street, Burpham, Arundel, West Sussex BN18 9RJ (5.3 miles away/13 minute drive)
01903 882160

Burpham Country House offers comfort, relaxation and tranquillity together with seriously good food, deep in the Arun Valley in the heart of the new South Downs National Park.
www.burphamcountryhouse.com

La Campania, 51 High Street, Arundel BN18 9AJ (2.5 miles away/7 minute drive)
01903 884500

Famous for its rustic cuisine the region of La Campania offers a true reflection of Italian lifestyle, embracing all the senses. Situated in the heart of historic Arundel, La Campania has been a destination local since 2010. With its traditional Italian food, warm atmosphere and welcoming staff, it provides the perfect dining experience for any occasion.
www.la-campania.co.uk

Best Takeaways

Thai Food Café, 22/23 Devonshire Arcade, Penrith CA11 7SX.
01768 840 043

Hours Monday – Saturday 11:00am – 21:00pm.
Café and Takeaway with good reviews.

Cooking & dining - great places to eat & drink

Indiagate, 11a Burrowgate, Penrith CA11 7TE
01768 210 020

Excellent eat in and take away curry. Try the spinach curry and katta masala.

Angel Lane Chippie (winner fryer of the year in 2009/2010), 17 Angel Lane, Penrith CA11 7BP
01768 866 762

Royal Lake (Chinese takeaway), 5 Sandgate, Penrith CA11 7TP
01768 891 725

Cooking & Dining - Shopping for Food

Best local supermarket

Booths, Westgate House, Brunswick Road, Penrith CA11 7JU
01768 890 666

Stocks a lot of locally sourced produce and have a fantastic deli and fresh range department.

Sainsburys, Common Garden Square CA11 7FG
01768 245 800

Morrisons, Brunswick Road, Penrith CA11 7JU
01768 867 631

Butchers

Cranstons, Ullwater Road Penrith CA11 7EH
01768 868 680

Renowned for its local butchery and won the 2011 National Butcher's Shop of the Year. It also has an excellent deli department and good local sourcing.

Major supermarket online orders

Sainsbury's
www.sainsburys.co.uk

Tesco
www.tesco.com

Things to do - activities and pampering

Our top recommendations for activities and pampering are below.

Quad biking

Rookin House Farm, Troutbeck, CA11 0SS

01768 483 561

Rookin House offers quad biking for a variety of age groups with mini quads for 6 – 11 year olds, midi quads for 12 – 15 year olds and adult quadbiking for 16+. We must recommend this quadbiking as amongst the funnest activities to do in the Lake District when it rains.

www.rookinhouse.co.uk

Clay pigeon shooting

07917 799 338

We can offer clay pigeon shooting including coaching for novices to experienced shots within the grounds of Melmerby Hall and Blencow Hall. Sessions normally last about three hours though there is flexibility around this, of course, depending the number of participants & the weather.

christine@therowleystates.com / richardmgdunn@hotmail.co.uk

Horse riding

Sockbridge Pony Trekking Centre

017683 863 468

The Pony Trekking at Sockbridge is into its third generation of family ownership and its longevity speaks to their repeat and referral business. The team easily accommodates a wide variety of ages & abilities from young kids led on shetland ponies, to adult complete novices to taking talented riders off for a gallop up the fells. Advance notice is important during the busy times & the focus for the center is during the spring and summer months.

Other popular local trekking providers are:

Rookin House Farm, Troutbeck, Ullswater, Penrith, Cumbria, Lake District, CA11 0SS

017684 83561

enquiries@rookinhouse.co.uk

Parkfoot Pony Trekking by Ullswater Howtown Road Pooley Bridge Penrith Cumbria CA10 2NA

017684 866 96

Situated on the edge of Ullswater, providing fully supervised treks for all, no matter what your experience.

Things to do - activities and pampering

Adventure Sports

BOF Paintball, Maughanby Farm, Little Salkeld, Penrith, Cumbria, CA10 1NP

07851 976 641 / 07766 561 138

With our eight unique scenarios (and expanding) our games range from trench warfare, close quarter combat to attacking and defending varied strategic positions.

BOF offer the latest in paintball equipment with TIPPMAN 98 Semi- Automatic markers, high quality paintballs, body protection, full face masks and gloves. Our trained Marshalls will ensure your BOF experience is a day to remember.

info@bofpaintball.co.uk

www.bofpaintball.co.uk

Cycling

The cycling routes around The Long House, Tortree and Birkemere are excellent. For a great session of safe and super exciting off road cycling, we recommend renting bicycles from Cyclewise at Whinlatter Forest or organising a cycle tour with CycleActive.

CycleActive Brougham Hall Brougham Penrith Cumbria CA10 2DE UK

01768 840 400

www.cycleactive.co.uk

Alternatively, if you would like excellent and well maintained cycles to be dropped off at your cottage for use during your stay, please contact Jason Taylor at Inspiring Cycling.

07887 764 987

www.inspiringcycling.co.uk

Golf

Keswick Golf Club, Threlkeld, CA12 4SX

01768 779 324

An 18 hole course in the Lake District, great views throughout. Not a long course at just over 6200 yards, weekend and weekly rates available in a variety of individual and group packages including 2:1 vouchers.

www.keswickgolfclub.com

Penrith Golf Club, Salkeld Road, Penrith CA11 8SG

01768 891 919

This club dates back to 1890 and has lovely views over the Eden Valley. It is a par 69 course with a recently refurbished Clubhouse. Visitors welcome with green fees ranging from £33 - 38 per round or £41 – 46 for a day ticket.

Things to do - activities and pampering

Penrith Golf Centre and Driving Range, Redhills CA11 0DR
01768 892 167

300 yard floodlit driving range and a 9 hole par 30 golf course. Club and ball hire available, no booking required with green fees from £8.50 for adults (9 holes) and £ 7.50 for juniors. Driving range £3.80 per basket of 60 balls for adults or £3.30 for juniors with discounts for multiple baskets.

Fishing

Penrith Angling Association, CA10 1RJ, 4.1 miles (11 minute drive)
01768 882 94

Penrith Angling Association has some of the best wild brown trout and grayling fishing in the country, set in the unspoilt and idyllic scenery of the Eden Valley. The whole river system is a Candidate European Special Area of Conservation, and a Site of Special Scientific Interest (SSSI).

www.penrithanglers.co.uk

Glyn Freeman Fly Fishing Tuition
01697 351 752 / 07808 563 788

There are many fishing beats along the Eden and other local rivers which are not open to the public. Glyn Freeman at Cumbria Fly Fishing is a full time, highly qualified fly casting instructor and guide as well as being a keeper on one of the lower stretches of Eden and the appointed fly casting instructor and guide for John Norris of Penrith.

www.cumbriaflyfishing.co.uk

Canoeing

Glenridding Sailing Centre, CA11 0PE
01768 482 541

'The main venue for sailing on Ullswater is the Glenridding Sailing Centre. Charlie used to teach sailing here in the summers and we have had some great days out on the lake at Ullswater.'

The club also offers canoe and kayak hire

www.glenriddingsailingcentre.co.uk

Pampering

For pampering in the comfort of your property, there is a range of treatments available from a local therapist including massage, pedicure, manicure, etc. Please book well in advance.

Please enquire via My Personal Sanctuary (www.mypersonalsanctuary.co.uk) via telephone number 01625 540 557 or email enquiries@mypersonalsanctuary.co.uk.

Top things to do with children

Our top recommendations for outings with children are below.

Craft Monkeys Pottery and Crafts Studio, CA11 7PX, 7.5 miles (20 minute drive)

01768 398 975

A fab way to entertain the family, with plenty to do such as pottery, decopatch, painting, mosaic making, or prints in clay.

Eden Rock Climbing Centre, 20.4 miles (28 minute drive)

01228 522 127

One of the largest indoor bouldering walls in England. Something for everyone, even if you've never tried rock climbing or bouldering before

Go Ape! 19 miles (30 minute drive)

Adventure in the treetops with the Go Ape! obstacle course. With ladders, walkways, bridges, tunnels, rope and zip wires, all with the safety of harnesses, pulleys and carabiners. In Whinlatter Forest near Keswick, about a 40 min drive. Really fun new Go Ape high ropes course running through the high larch pine trees where you can (safely) launch yourself from the tree branches into cargo nets and climb across the ropes course.

Glenridding Activity Centre, CA11 0PE, 12.5 miles (29 minute drive)

01768 482 541

Set on the shores of Ullswater. Learn to sail, canoe or kayak, have sail races or go on a sailing picnic; there is something to do for those of all ages and levels of ability.

Lakeland Bird of Prey Centre, 10.4 miles (22 minute drive)

A large collection of birds of prey consisting of hawks, eagles, vultures, owls, falcons and buzzards, with flying demonstrations daily. Visitors get the opportunity to fly a bird at the display and onsite tearoom and local crafts make this an easily enjoyable day out for the family.

Llama Trekking in the Lake District, Llama Karma Kafe Brougham CA10 2AB

01768 889 389 (treks) or 01768 866 776

Half day treks including picnic lunches or café meal. Reservations required.

Top things to do with children

The Rheged Centre, Redhills CA11 0DQ
01768 868 000

The large screen films are excellent, it has the 3rd best equipped projection room in the country. It also has a collection of shops featuring local produce & restaurants. Indoor soft play area, pottery painting, outdoor playground. Calling in advance to check times and activities available is recommended.

Top places to visit and shop nearby

Greystoke Castle, CA11 0TG, 1.7 miles (5 minute drive)

01768 483 722

With the castle dating back almost a thousand years, the secluded and tranquil building enjoys stunning views of the mountains of the north-east lakes and the northern Pennines.

www.greystoke.com

Aira Force, 7.5 miles (20 minute drive)

01768 482 067

A tumbling waterfall drops 65ft and can be reached via a stroll through woodland and landscaped glades. One of the most famous in the Lake District and a must see when in the local area – great starting point for longer walks through Glencoyne Park and Gowbarrow Fell, the walk, which inspired William Wordsworth's poem Daffodils.

www.nationaltrust.org.uk/aira-force-and-ullswater

Gowbarrow Fell, 8.6 miles (21 minute drive)

Gowbarrow Fell is one of the less obvious Lake District Fells lying above the north western shores of Ullswater. Despite its lack of stature it is a popular place to walk with Aira Force, a spectacular waterfall, after heavy rain.

www.walklakes.co.uk/walk_39.html

Lacy's Caves, 12.8 miles (27 minute drive)

Consisting of five man made chambers carved out of the sandstone cliffs directly above the River Eden at Glassonby, just north of the village of Little Salkeld.

www.english-lakes.com/lacys_caves.html

Long Meg and her daughters, 13.8 miles (28 minute drive)

The stone circle has a diameter of about 350ft, the second biggest in the country. Local legend claims that Long Meg was a witch who with her daughters, was turned to stone for profaning the Sabbath, as they danced wildly on the moor. The circle is supposedly endowed with magic, so that it is impossible to count the same number of stones twice, but if you do then the magic is broken.

www.visitcumbria.com/evnp/long-meg-and-her-daughters

Top places to visit and shop nearby

Bassenthwaite Lake, 21.4 miles (30 minute drive)

Owned by the National Park Authority, the most northerly of the Lakes, and has no major settlements on its shores.

www.visitcumbria.com/kes/bassenthwaite-lake/

Dalemain, 6.2 miles (13 minute drive)

Home to 'The World's Original Marmalade Awards & Festival', held at the Dalemain House, an impressive Georgian Manor, every year in March.

www.dalemain.com/index.php

Hutton-in-the-Forest, 3.1 miles (8 minute drive)

01768 484 449

An ancient and historic Cumbrian house. As well as a rich variety of architecture, furnishings and a beautiful garden, there are varied outdoor events during the summer, including the Plant and Food Fair, open air Shakespeare, Potfest in the Park and Horse Trials.

www.hutton-in-the-forest.co.uk/

Helvellyn, 17.8 miles (30 minute drive)

As the highest point of the Eastern Fells, this mountain in the Lake District stands at 950m above sea level, making it the third highest peak in both the Lake District and England. The traditional border of Cumberland and Westmorland lies along the Helvellyn Ridge.

www.helvellyn.com/

Hadrian's Wall, 36.4 miles (47 minute drive)

Marching 73 miles from sea to sea across some of the wildest and most dramatic countryside in England, well worth a day out for the history and amazing archaeology. A good museum, tea room and fun for running around – Vindolanda & Roman Army Museum.

www.visithadrianswall.co.uk/

Useful information

Fell Cottage at a glance:

Bedrooms and Bathrooms

- Sleeps up to six
- Three bedrooms, all with an ensuite bathroom
- One super kingsize bed and two kingsize beds
- Super kingsize bed is zip and link, and can also be set up as twin beds

Cooking and Dining

- Stainless steel Britania range incorporating two electric ovens and a gas hob, microwave, American style fridge/freezer, dishwasher, washing machine, tumble dryer.
- Weber BBQ

Children Welcome

- Cots available
- High chairs available

Where We Are

- The Postcode is CA11 0DF
- The nearest large village is Greystoke, just over a mile away
- The nearest train station is Penrith, a 13 minute drive
- The nearest airport is Carlisle, a 37 minute drive
- Taxis available
- Plenty of parking available

Things to Do Inside

- 42" TV
- DVD player
- Stereo
- iPod dock
- Wi-Fi

Things to Do Outside

- Extensive gardens and great walks nearby

Activities

- Sail, canoe and kayak at Glenridding Sailing Centre, Ullswater
- Country pursuits available including clay pigeon shooting
- Quad biking
- Horse riding
- Cycle hire for the Coast 2 Coast route
- Pampering and beauty treatments at the house

Useful information

Top Things to Do for Children

- Picnic at Ullswater Lake
- Crafty Monkeys pottery and crafts studio
- Pony trekking
- Woodland trail cycling
- Eden climbing centre
- Greystoke Castle

Payment Process

- We take a one third deposit at the time of booking
- The balance is due three months before the date booked

Cautionary Deposit

- £500 refundable deposit

House Restrictions

- Up to two well behaved dogs allowed
- Not suitable for stag parties
- Hen parties welcome

Arrival and Departure

- Week or Weekend bookings begin on Friday or Saturday
- Check in 4pm
- Check out 4pm on a Sunday
- Check out 10am on other days

What's Included

- Linen
- Towels
- Essentials
- Utilities
- Underfloor heating
- Bicycle hire available