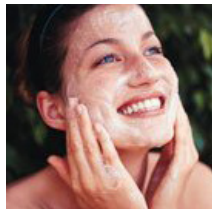
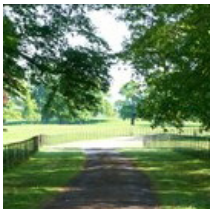


kate & tom's

Extraordinary holidays, celebrations & adventures



Enjoying your stay at Greenway Barns

Everything you need to get the most out of your stay

Contents

Arrival	3
<i>Where We Are</i>	3
<i>Check in and check out</i>	3
Cooking & dining - chef services.	5
Cooking & dining - great places to eat & drink	6
Cooking & Dining - Shopping for Food	10
Things to do - activities and pampering	13
Top things to do with children.	17
Useful information	23
Guest Reviews	26

Arrival



Where We Are

Property Name: Barsham Barns
Address: Greenway Barns
Great East Barn
North Barsham
County: Norfolk
Postcode: NR22 6AP

Check in and check out

Check in time: 4pm

Check out time for 2 night weekend booking: 10am Sunday
Check out time for 3 night weekend booking: 10am Monday
Check out time for 7 night week bookings: 10am Friday

The best postcode to use with Satnav is: NR22 6AP

Nearest Train station and distance: King's Lynn, 25 minutes drive

The nearest airport is: Norwich, 45 minutes drive

Taxis are available

Tiny's	01328 888 888
Elite Travel	01328 821 812
Near & Far	01328 853 636

Getting to Us

The best postcode to use with Satnav is: NR22 6AP

Nearest Train station and distance: King's Lynn, 25 minutes drive

Directions

From London and the A11, head for Swaffham on the A1065.

From Norwich take the A1067.

From King's Lynn take the A148 Cromer road.

From the A148 Fakenham bypass, follow signs for the B1105 to Wells-next-the-Sea. Very shortly after turning off the bypass the B1105 turns off to the left at a small staggered crossroad. This has a signpost to Wells and also Holkham.

(If you pass a white cottage on the left you have gone too far. If you come to the church and pub you have gone much too far!)

After about a mile you will see pale blue field gates on either side, then as the road rises there is a crossroads and a sign to 'The Barshams' to the right.

Turn right here and carry on down the hill.

Continue past farm buildings on right, through woods and wind along the valley until you pass a row of terrace cottages on the left.

At the green by the telephone box turn right and follow the road down to entrance gates to the barns on the left on the lower road.

Please pull off the road to open gates and close behind you. Drive through main gate to courtyard and you will find The Great East Barn on your left.

Cooking & dining - chef services

You'll find our top recommendations below. If you do discover any other gems please do let us know and we will share them with other guests visiting the property.

Chef Services

Kelby Light, a fantastic local chef

Kelby can prepare meals that are delivered to the barns. We just need at least one week's notice so ring us with your order and we'll arrange delivery. All you'll need to do is pop them in the oven!

Alternatively he can come to the barns to cook for you but will need a few weeks notice for private chef services.

Cooking & dining - great places to eat & drink

Nearest pub

White Horse Inn, Fakenham Rd, Fakenham, Norfolk, NR21 0LH
01328 820 645

Extended 17th century inn with restaurant, good range of well liked home-made food, Greene King ales, friendly helpful staff; children and dogs (in bar) welcome,

Pubs

The Victoria, Holkham, NR23 1RG (7.7 miles / 14 minute drive)
01328 711 008

Trendy pub/restaurant close to the beach at Holkham. Menu relying heavily on the best ingredients the surrounding area has to offer and what is seasonally available, whether it be crabs from Cromer, mussels from Brancaster or venison, beef, game and eel from the Holkham Estate.
www.holkham.co.uk/victoria

The Crown, East Rudham, PE31 8RD (9.1 miles / 15 minute drive)
01485 528 530

Newly refurbished stylish pub overlooking the village green with delicious new menu.
www.thecrowninnorfolk.co.uk

The Three Horseshoes, NR23 1NL (6.1 miles / 15 minute drive)
01328 710 547

Traditional Norfolk pub serving fine beers & wines and delicious home-cooked food. Lunches & evening meals. Famous for its puddings.

The Kings Head, Letheringsett, Holt, Norfolk NR25 7AR (14.4 miles / 22 minute drive)
01263 712 691

The King's Head near Holt offers a homely mix of original features and modern-day comfort in its bar and restaurant.
www.kingsheadnorfolk.co.uk/

Cooking & dining - great places to eat & drink

Restaurants

The Norfolk Riddle, Little Walsingham (2.2 miles / 6 minute drive)

01328 821 903

Part of the Walsingham Farms Shop, the Riddle has a fantastic fish and chips shop takeaway and also a restaurant serving produce from the local farms and of course, fish and chips.
www.norfolkiddle.co.uk

The Walsingham Café, Great Walsingham (3 miles / 8 minute drive)

01328 822 255

Young chef Paul Stretton has won lots of awards for his delicious pies. Using local produce the cafe provides snacks, tea, coffee, cakes, cooked lunches and take-away hot food.
www.walsinghamcafe.co.uk

The Crown Hotel, Wells-next-the-Sea (6.4 miles / 12 minute drive)

01328 710 209

The menu features traditional favourites, the best of modern British cuisine, and dishes influenced by the cooking of the Pacific Rim. A superb wine list complements the menus.
www.thecrownhotelwells.co.uk

Sculthorpe Mill, Fakenham (6.2 miles / 15 minute drive)

01328 856 161

Restaurant and bar with large selection of traditional and European dishes. Good range of beers and wines.
www.sculthorpemill.com

Morston Hall, Morston (12.4 miles / 23 minute drive)

01263 741 041

Michelin starred chef Galton Blackiston's restaurant with daily changing set menu for dinner, one sitting at 7:30 for 8pm. Lunches on Sunday only. Exceptional food in relaxing and elegant surroundings. Book at least a month in advance!
www.morstonhall.com

The King's Head, Great Bircham (15 miles / 25 minute drive)

01485 578 265

Stylish award winning hotel restaurant, innovative and unfussy menus. Young Norfolk chef who uses local seasonal fresh produce.

Cooking & dining - great places to eat & drink

www.the-kings-head-bircham.co.uk

The Wiveton Bell, Wiveton (16.1 miles / 27 minute drive)

01263 740 101

Consistently good cooking and pleasant atmosphere makes The Wiveton Bell one of the most popular establishments in North Norfolk.

www.wivetonbell.com

The White Horse Hotel, Blakeney (13.9 miles / 27 minute drive)

01263 740 574

Local shellfish feature strongly, simply cooked mussels through the winter months and crabs in spring and summer. A blackboard of daily specials with the accent on fish complements the printed menu. Good for families and groups. Cosy bar or larger conservatory.

www.blakeneywhitehorse.co.uk

The Moorings, Blakeney (13.9 miles / 27 minute drive)

01263 740 054

Fresh simple honest food - fantastic local fish, shellfish, game in season, delicious meat and vegetarian dishes, puddings, and a well-chosen wine list. Situated on the High Street, close to the quay.

www.blakeney-moorings.co.uk

The Walpole Arms, Itteringham (19.8 miles / 35 minute drive)

01263 587 258

Multi-award winning food and drink served in 18th Century oak-beamed bar and romantic restaurant - in summer garden & terrace.

www.thewalpolearms.co.uk

The Neptune Inn Restaurant, Old Hunstanton (20.7 miles / 37 minute drive)

01485 532 122 / 01328 878 345

The menu changes weekly depending on what game, fish and vegetables are in season. The chef, Keith Mangeolles, only uses fresh local produce. New England theme, great reputation.

www.theneptune.co.uk

Cooking & dining - great places to eat & drink

Best places to eat out with children

The Globe Inn, Wells-next-the-Sea

01328 710 206

Recently updated pub/restaurant owned by Holkham Estate. Simple home-cooked food available as bar meals or snacks, childrens' meals, using local and seasonal ingredients.

www.holkham.co.uk/globe

Best Takeaways

Humble Pie, Burnham Market

01328 738 581

Humble Pie is a very good small deli in the Market Place, Burnham Market.

www.humble-pie.com

Byfords Cafe, Winebar & Deli, Holt (15.5 miles / 25 minute drive)

01263 711 400

Restaurant, cafe and delicatessen serving locally produced food in a cosy setting. Lunches, teas and dinner.

www.byfords.org.uk

Blakeney Delicatessen, Blakeney

01263 740 939

This is a great small deli on the High Street in Blakeney with a choice of charcuterie, cheese, local vegetables and an interesting selection of wines.

www.blakeneydeli.co.uk

Picnic Fayre, Cley next the Sea

01263 740 587

This is an award-winning delicatessen with an interesting selection of food, bread and cakes. Perfect for picnics! They also have a good and reasonably priced wine selection.

www.picnic-fayre.co.uk

Cooking & Dining - Shopping for Food

Best local supermarket:

Morrisons, Clipbush Lane, Fakenham, East Midlands NR21 8SW
01328 855 295
www.morrisons.com/

Tesco, Oak St, Fakenham, Norfolk NR21 9DX
0345 0269 522
www.tesco.com/store-locator/uk/?bID=5120

Butcher and Fish supplier

Arthur Howell Butcher, Wells next the Sea
01328 71 022

This is an excellent place for local meat and game, it's well-established and reliable.

Orchard Farm Products, Hindringham
01328 878 174 / 07710 671 763

Home reared meat from happy pigs! Ring to order joints and collect from the farm.

Lower Green Farm, Moorgate Road, Hindringham

Arthur Howells Butcher, Burnham Market
01328 738 230

This butcher is an excellent place for local meat and game, located in the Market Place.

Gurney's Fish Shop, Burnham Market
01328 738 967

Gurney's is a small fish shop with fresh local fish, mussels and cockles in season, home smoked kippers and salmon. They also offer some ready meals, pates, delicious Thai fish cakes and fresh herbs.
www.gurneysfishshop.co.uk

Cooking & Dining - Shopping for Food

North Norfolk Fish Company, Holt
01263 711 913

Excellent fresh and smoked fish supplier.
www.northnorfolkfish.co.uk

Cley Smokehouse, Cley next the Sea
01263 740 282

The Cley Smokehouse has all kinds of smoked fish: kippers, bloaters, smoked salmon, potted shrimps, mackerel pate and fantastic taramasalata.
www.cleysmokehouse.com

Bakery

Grooms Bakery, Burnham Market
01328 738 289

Grooms Bakery is a traditional bakery and great for bread and cakes. Situated in the Market Place.

Bakers & Larners of Holt
01263 712 323

This is a large delicatessen with a wide range of foodstuffs. Great cheese selection, charcuterie, in store butcher, excellent specialist wine selection.
www.bakersandlarners.com

Letheringsett Mill, near Holt
01263 713 153

This is a traditional flour mill supplying a variety of flours and they also have working demonstrations.
www.letheringsettwatermill.co.uk

Groceries

Benbow & Sons, Holt
01263 714 003

A traditional greengrocer with a good selection of fruit and vegetables, some locally grown.

Cooking & Dining - Shopping for Food

Back to the Garden

01263 715 996

Located at Brecks Farm, west of Letheringsett, Back to the Garden offers organic meat, fruit, vegetables and bread.

www.back-to-the-garden.co.uk

Wells Delicatessen, Wells-next-the-Sea

01328 711 171

This Deli has a good selection of meats, cheeses, wine and bread.

www.wellsdeli.co.uk

Walsingham Farm Shop

01328 821 877

This is a fantastic new partnership between local producers supplying free range eggs, breads, cakes, local meat, smoked fish, pies, ready meals, soups, locally grown vegetables and much more.

www.walsinghamfarmsshop.co.uk

The Moorings (Blakeney)

01263 740 054

Fresh simple honest food - fantastic local fish, shellfish, game in season, delicious meat and vegetarian dishes, puddings, and a well-chosen wine list. Situated on the High Street, close to the quay.

www.blakeney-moorings.co.uk

Wiveton Hall Farm & Café

01263 740 525

Located between Cley and Blakeney this farm offers strawberries, raspberries and currants available picked or PYO and home grown vegetables in season. They also have home reared pork.

www.wivetonhall.co.uk

Major supermarket online orders

Morrisons

www.morrisons.com

Tesco

www.tesco.com

Things to do - activities and pampering

Our top recommendations for activities and pampering are below.

Horse riding

North Norfolk Riding Centre

01328 820 933

The North Norfolk Riding Centre offers lessons for all ages from beginners upwards. It also offers hacking in beautiful countryside. Occasional rides at Holkham for experienced riders only.

www.norfolkhorseriding.co.uk/ridingschools.htm

West Runton Riding Stables

01263 837 339

This is a farm museum with working horses and British pony breeds. Opt for a lesson in a covered school or go for a ride through the countryside.

www.norfolk-shirehorse-centre.co.uk

Blackborough End Equestrian Centre, Kings Lynn

01553 841 212

www.beec.co.uk

A great website for more information on Riding Schools

www.norfolkhorseriding.co.uk/ridingschools.htm

Horse Racing, Fakenham Race Course

01328 862 388

This is a small racecourse with regular meets and point-to-point.

www.fakenhamracecourse.co.uk

Golf

Sheringham Golf Club

01263 822 038

Links golf course overlooking the sea.

www.sheringhamgolfclub.co.uk

Things to do - activities and pampering

Royal West Norfolk Golf Club, Brancaster
01485 210 223

Delightful links course in a marshland setting. Challenging!
www.uk-golfguide.com

Hunstanton Golf Club
01485 532 811

Championship links course at Old Hunstanton.
www.hunstantongolfclub.com

Marriott Sprowston Manor Hotel, Sprowston, Norwich
01603 410 871

PGA Approved championship course

Fishing

Glen Mere
01263 761 303

Private lakes in woodland setting close to Cromer.

Bure Valley Fishery, Aylsham
01263 235 372

Norfolk Fishing Trips

Summer sea-fishing day trips.
www.norfolkfishingtrips.co.uk

Burn Valley Fisheries
01328 823 790

Lake fishing
www.burnvalleyfisheries.co.uk/south-creake.php

Things to do - activities and pampering

Sailing

Norfolketc

01263 740 704

There's private tuition and private charter on offer at this family-run watersports centre in Blakeney Harbour
www.norfolketc.co.uk

North Shore

01485 210 236

North Shore offers a range of watersports including windsurfing and sailing from their base at Brancaster Staithe
www.northshoresport.co.uk/

'Juno' Sailing Barge

01263 740 377

Charter this magnificent sailing barge for a day or half-day trip around the North Norfolk coast. May to October only.
www.charlieward.co.uk

Branta Cruises

07775 728 904

Two-hour boat trips to Scolt Head island with conservationist and warden Jon Brown
www.brantacruises.co.uk

Huntstanton Kitesurfing School

Learn to kitesurf on the Norfolk Coast at this kitesurfing school in Hunstanton.
www.hunstantonwatersports.com

Things to do - activities and pampering

Cycling

On Yer Bike

01328 820 719

Comfortable mountain bikes which can be delivered direct to the barns. Wells and Holkham Circuit Route
Maps, pump, puncture repair kit, cycle locks & baskets all inclusive.

www.norfolkcyclehire.co.uk

Overland Cycle Hire, Holt

01263 713 293 / 07733 445 511

www.overlandcycles.co.uk

Bircham Windmill Cycle Hire

01485 578 393

www.birchamwindmill.co.uk

Top things to do with children

Our top recommendations for outings with children are below.

Sea Life Sanctuary, Hunstanton

01485 533 576

The Sea Life Sanctuary has otters, penguins and more than 30 permanent displays all showcasing the rich diversity of life under the waves. There's a rescue sanctuary too.

www.sealsanctuary.co.uk/

Banham Zoo, Attleborough

01953 887 771

This Zoo has 35 acres of beautiful parkland and gardens with innovative and exciting enclosures, providing sanctuary for almost 1000 animals ranging from big cats to birds of prey and shire horses.

www.banhamzoo.co.uk/

The Thursford Collection, Thursford Green

01328 878 477

The Thursford Collection has traction engines, mechanical organs, Wurlitzers and fairground rides.

www.thursford.com/

North Norfolk Riding Centre, Holkham

01328 820 933

The North Norfolk Riding Centre offers lessons for all ages from beginners upwards and hacking in beautiful countryside. Occasional rides at Holkham for experienced riders only.

North Norfolk Railway

01263 820 800

This steam railway takes you through some lovely Norfolk countryside on the trip from Sheringham to Holt.

www.nnrailway.co.uk/

Wells & Walsingham Light Railway

01328 711 630

Another great day out for railway fans on this narrow gauge steam railway from Wells. Just a 20-minute drive from our family friendly cottages at North Barsham.

www.wellswalsinghamrailway.co.uk/

Top things to do with children

Hunstanton Oasis Swimming Pool 01485 534 227

Hunstanton Oasis is a leisure pool with flume and spa pool, squash court, sunbeds, cafe and fitness studio

Doodle Pots Café, Holt 01263 713 135

A great day out and a chance to get creative by decorating your own pots and taking home a present you made yourself!
www.doodlepotsnorfolk.co.uk/

Dinosaur Park, Weston Longville 01603 876 310

Life size dinosaurs hiding in the undergrowth plus activities for children and a playground.
www.dinosauradventure.co.uk/

Puppet Theatre, Norwich 01603 629 921

Enchanting puppet theatre with changing programme throughout the year. Norwich is just a short drive from our cottages in North Barsham and Haveringland.
www.puppettheatre.co.uk/

Glandford Shell Museum 01263 740 081

The Shell Museum was built to house a collection of shells made over a period of sixty years by the late Sir Alfred Jodrell.
www.shellmuseum.org.uk/

Holt Country House 01263 516 062

There's a woodland and play area and seasonal events including guided walks, pond dipping, nightjarring, mountain bike adventure trails and shelter building/survival techniques.

Foxley Wood 01603 625 540

This is Norfolk's largest ancient woodland. Open daily, except Thursday 10am-5pm
www.norfolkwildlifetrust.org.uk/wildlife-in-norfolk/nature-reserves/reserves/foxley-wood

Top places to visit and shop nearby

Blickling Hall

01263 738 030

This is a magnificent Jacobean house with a garden and park. The Hall is famed for its long gallery, fine tapestries, paintings and rare books. There's parkland and lakeside walks plus a sunken garden to discover. Reputedly home to the headless ghost of Anne Boleyn! There are various events all year round and it's open from April to October.

www.nationaltrust.org.uk

Holkham Hall

01328 710 227

Superb Palladian house and ancestral home of the Earls of Leicester. Set in acres of parkland Holkham Hall has cafes and shops and events all year round.

www.holkham.co.uk

Sandringham House

01553 612 908

Sandringham is the country house of the Queen and Duke of Edinburgh. The main ground floor rooms are open to the public and house collections of porcelain, jade, furniture and family portraits. There's a glorious 60-acre garden, garden folly, Queen Mary's summerhouse, parterre, rock, alpine gardens, water and woodland.

Oxburgh Hall

01366 328 258

Oxburgh Hall is a moated and turreted Tudor house built in 1482. There are panoramic views from the top of the medieval gatehouse. Rich interiors, embroidery by Mary Queen of Scots and 16th century priest hole. It has 18 acres of French parterre, herbaceous borders, kitchen garden, orchard, woodland walks and wilderness area.

Houghton Hall

01485 528 569

Houghton Hall is an early 18th century house built for Sir Robert Walpole. It has 350 acres of rolling parkland, a collection of 20,000 model soldiers and militaria, heavy horses, gift shop and picnic area. There's also a spectacular 5 acre walled garden, herbaceous borders, landscaped parkland, rose and sunken garden and parterre.

Top places to visit and shop nearby

Felbrigg Hall

01263 837 444

Felbrigg Hall has remarkable Stuart architecture and a fine Georgian interior. It has a prolific library and Grand Tour collection. Outside there's a stunning walled garden, orangery and orchards. There are plenty of lakeside, parkland and woodland trails to explore. Events are held here throughout the year.

www.nationaltrust.org.uk

Castle Rising Castle

01553 631 330

If you're looking for a real Castle then this 12th-century keep with magnificent earthworks is just what you need!

www.castlerising.co.uk

Tales of the Old Gaol House, Saturday Market Place, King's Lynn

01553 774 297

Experience an atmospheric visit to the old cells, hear tales of local witches, murderers and highwaymen or try out the stocks in the old market square.

Bircham Windmill

01485 578 393

Windmill museum, tearoom, gift shop, bakery, garden and play area. There's also fresh bread for sale.

www.birchamwindmill.co.uk

Langham Glass Factory

01485 529 111

Located in East Rudham, near Fakenham, you can watch glassmaking at the Langham Glass Factory and listen to glassmakers as they demonstrate their skill. There's also a video, glass information area and marble-based games tables.

Go Ape!

0870 458 9187

High wire forest adventure course in Thetford Forest with rope bridges, tarzan swings and zip slides. Trek from tree to tree through the forest canopy!

Top places to visit and shop nearby

Iceni Village

01760 724 588

The Iceni Village at Cockley Cley near Swaffham is a representation of a typical Iceni settlement of 2000 years ago. Walk through the gateway and experience the atmosphere of Iron Age Norfolk.

Cromer Museum

01263 513 543

Cosy Victorian fisherman's cottage with recreation of 19th century life in Cromer. It has a geology gallery of amazing fossils found in Norfolk, childrens' workshops, natural history walks and Victorian Living History days.
www.museums.norfolk.gov.uk

Useful information

Greenway Barns at a Glance

Bedrooms and Bathrooms

- Sleeps up to 48
- Great East Barn has seven bedrooms, four with ensuite bathrooms, three with ensuite shower rooms and WC
- Master bedroom has a four poster bed, three of the bedrooms have kingsize beds, two of which are zip and link able to be converted to twins, two of the bedrooms have double beds and the last bedroom has twin beds.
- High Barsham has six bedrooms, two with ensuite bathrooms, two with ensuite shower rooms and two share a bathroom
- Master bedroom has a four poster bed, three of the bedrooms have double beds, one has a zip and link kingsize able to be converted to twins, and the last bedroom has twin beds.
- Greys Court has five bedrooms, all with either an ensuite bathroom or ensuite shower room and WC
- Four of the bedrooms have kingsize beds and the last bedroom has twin beds
- Long Meadow has four bedrooms, two with ensuite shower rooms, the other other two share a bathroom
- Two of the bedrooms have double beds, one has a zip and link super kingsize bed that can be converted to twins, and the fourth for children and has a bunk bed
- Little Barsham has two bedrooms, both with kingsize beds, one able to be converted to twins and ensuite bathrooms

Cooking and Dining

- Great East Barn has a dining table that seats 14 guests comfortably, but can extend up to 22
- Outside of Great East Barn has a table that seats up to 14 guests
- High Barsham has a dining table that seats up to 12 guests
- Greys Court has dining that seats up to 10 guests

Children Welcome

- Two games rooms, one with table tennis, one with table football
- TV, Cable and DVDs
- Children must be supervised when entering the spa pool / jacuzzi areas at any time

Where we are

- The postcode is NR22 6AP
- The nearest village is Fakenham, 5 miles
- The nearest train station and distance is King's Lynn, a 25 minute drive
- The nearest airport is Norwich, a 45 minute drive
- Ample parking space

Useful information

Things to Do Inside

- Stereo
- CD Player
- DVD Player
- TV with Freeview
- Wi-fi
- Table Tennis
- Table Football

Things to Do Outside

- Barbeque
- Terrace
- Garden

Activities

- Horse Riding
- Sailing & Windsurfing
- Nature and Wildlife Boat trips
- Pensthorpe Wildlife Park
- Sheringham Golf Club

Top Things to Do for Children

- Hilltop Outdoor Centre
- Sea Life Sanctuary
- Banham Zoo
- Dinosaur Park

Payment Process

- We take a one third deposit at the time of booking
- The balance is due three months before the date booked

Cautionary Deposit

- £500 refundable deposit

House Restrictions

- Smoking is not permitted on the property
- No pets allowed
- Noise policy in place
- Not suitable for Wheelchairs

Arrival and Departure

- Check in 4pm
- Check out 10am

Useful information

What's Included

- Fireplace
- Central Heating
- Underfloor heating in winter months
- Welcome tea tray and flowers on arrival including tea, milk, sugar and local Norfolk biscuits or cake

Guest Reviews

"I'm trying to take a snapshot memory of all these beautiful views! It's been such a relaxing, fun and inspiring place to stay." – **Sarah**

"Fantastic week and stunning weather given the time of year. Excellent barn and the perfect place for a relaxing week with a 9 month old! Thanks for making us feel so welcome and rested." – **Maggie**

"Our third visit to Long Meadow and fifth overall to Barsham Barns. I'm sure we will be back. The children love it and so do we!" – **James**

"Four of the best homes for house parties." – **Telegraph Magazine, 2011**