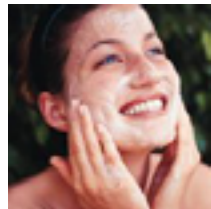


kate & tom's

Extraordinary holidays, celebrations & adventures



**Enjoying your stay at
Kite's Gate Cottage**

Everything you need to get the most out of your stay

Contents

Arrival3
<i>Where We Are</i>	3
<i>Check in and check out.</i>	3
Getting to us4
<i>Directions.</i>	4
Cooking & dining - chef services.5
Cooking & dining - great places to eat & drink6
Cooking & dining - shopping for food8
Things to do - activities and pampering9
Top things to do with children	10
Top places to visit & shop nearby	12
Useful information	13
Guest reviews	16

Arrival

Where We Are

Property Name: Kingham Coach House and Cottages
Address: Kite's Gate Cottage
West End
Kingham
County: Oxfordshire
Postcode: OX7 6YL

Check in and check out

Check in time: 4pm
Contact name for check in: Chris or Delphi
Contact number for check in: 01608 658226

Check out time for 2 night weekend booking: 4pm on Sunday
Check out time for 3 night weekend booking: 10am
Check out time for 7 night week booking: 10am

Getting to us

The nearest station is: Kingham Station, less than 1 mile away.

Taxis are available: Excelsior Taxis, 01608 643721

Directions

Satnav takes you directly to the property. Please look out for a sign to Kingham Lodge, go through the entrance and you will find Kingham Coach House and Cottages on your right.

For help with finding the house on your day of arrival please call on 01608 658226 and ask for Kingham Couch House.

Cooking & dining - chef services

You'll find our top recommendations below. If you do discover any other gems please do let us know and we will share them with other guests visiting the property.

Catering and Drop-off meal service

Highly recommended by our guests, James Benson is a former Claridge's and Lygon Arms chef who uses fresh, Cotswolds produce. To add an extra special touch to your break, James can be your Chef for a night cooking a three course meal or provide you with superb, ready to go meals or barbecue dishes dropped off for your convenience. If you require James, please book as soon as possible after making your booking. James' website is www.bensonofbroadway.co.uk and he is always happy to discuss your catering needs with you. His phone number is 01684 854406, mobile 07807 453308.

Gluts & Gluttony

Email Kathy: kathy@glutsandgluttony.com, Tel: 07805 262667

Email Mandy: mandy@glutsandgluttony.com, Tel: 07789 988984

www.glutsandgluttony.com

Armed with enough ingredients and gadgetry to fuel a small army, culinary extraordinaires Kathy and Mandy can swoop into your holiday home and cook up a feast that's perfect for your special celebrations. Every menu is different and designed specifically to your requirements, using the best seasonal produce from around the Cotswolds. Kathy and Mandy also offer bespoke private cookery classes for those wanting to sharpen their skills; lessons can range from teaching children about healthy, tasty cooking to making the perfect afternoon tea. On top of that, Gluts & Gluttony can deliver pre-prepared homely meals that can be stored in the freezer and taken out whenever you get peckish! Be sure to contact them well in advance as they are a popular choice.

Love Bites

www.lovebites.events

Kelly: 07774 725187

Rachel 07979 690163

indulge@lovebites.events

An excellent catering company that provide adventurous, tasty canapés for any event, be it a small family gathering or birthday party. Contact them soon as they also get booked up quickly.

Local produce that the area is renowned for

As we're sure you're well aware, the Cotswolds is a foodie's paradise: literally everything and anything is grown and raised on these vast, green expanses. The buying and selling of organic foods has long been a tradition within these villages, and the successes of the Cotswolds farmers markets has now led to a national trend in 'localised ethical shopping', a movement spearheaded by the Prince of Wales, who has his own market shop in Tetbury, and firmly believes strong local markets creates a strong local economy and a vibrant society.

Be sure to check our 'Top Places to Visit' section to find some examples of places that produce some of the UK's best food.

Cooking & dining - great places to eat & drink

Pubs

Always advisable to book well in advance!

Stroll along to **The Kingham Plough**, the perfect Cotswolds stone inn with an outstanding restaurant alongside the perfect village pub. "The kitchen is a serious restaurant workplace. The bar menu is as fine as any I've seen", says AA Gill in the Sunday Times. Hook Norton ale is on tap for real ale fans.

The Kings, Bledington 01608 658 365

Excellent country pub serving great British food in a fantastic location on the village green.

The Fox Inn, Lower Oddington 01451 870555

This traditional flagstone pub is set in a picture perfect Cotswolds village and is best known for its fine wines and real ales; also serves up some good modern brasserie specials.

The Old Butchers, Stow-on-the-Wold 01451 831700

A modern informal brasserie with cosmopolitan style.

The Swan Inn, Swinbrook, Near Burford 01993 823339

A 17th Century pub set in a lovely quiet location serving good contemporary food. Awarded the County Dining Pub Award by the Good Pub Guide. Managed by the owners of The Kings, Bledington.

Restaurants

Our advice is always book well in advance.

Russells, Broadway 01386 853555

Award-winning restaurant serving modern British food in chic surroundings. Set in the heart of the stunning village of Broadway it is worth travelling to and has a private dining room for larger groups. www.russellsofbroadway.co.uk

Gees, Oxford 01865 553 540

Famous local landmark, this smart restaurant is housed in a restored Victorian conservatory and serves fine food with a strong British influence. www.gees-restaurant.co.uk

Le Manoir au Quat Saisons, Great Milton 01844 278 881

For a very special occasion! Raymond Blanc's fine dining restaurant with two Michelin stars set in a picturesque location in Great Milton, Oxfordshire. www.manoir.com

Café

Lots to choose from in all the local villages but we've listed some more below.

Daylesford Cafe 01608 731700

Cooking & dining - great places to eat & drink

A delicious slice of the Cotswold; enjoy organic breakfast, lunch and afternoon tea and al fresco eating under parasols in the stylish courtyard. Daylesford is pricey but worth experiencing!

Huffkins, High Street, Burford

Great bakery and tea rooms serving a good cup of tea in this well known Burford shop.

Maison Blanc, High Street, Burford

Delicious French patisserie and light lunches available in this spacious, light cafe.

The Burford Garden Company, Burford 01993 823117

Set just outside Burford, a perfect place for a relaxed café and shopping outing. This is much more than a garden centre – it is a home store, a toy store and much more.

Best places to eat out with children

We recommend the following for eating with children.

Moreton-in-Marsh

Pop into Ask Pizza for a quick meal or visit Tillys for tea, cakes and light lunches. The Cotswold Cheese Shop serves a good selection of delicatessen food for picnics. There is also a playground for younger children to let off steam opposite Warner Budgens.

Burford

Burford Garden Company just outside Burford- perfect for delicious home-cooked lunches and afternoon tea. Huffkins Bakery, High Street, Burford – offering a wide choice of light meals, cakes and ice cream sundaes. Baby changing facilities available.

Maison Blanc

High Street, Burford - delicious French cakes. Baby changing facilities.

Cooking & dining - shopping for food

Local supermarket

Kingham Village Store and Post Office

Tesco in Stow-on-the-wold. The largest supermarket in the area with long opening hours.

Wine merchant

Haynes Hanson and Clark, Stow-on-the -Wold 01451 870808

Organic/local produce

Daylesford, near The Kingham Coach House & Cottages, the UK's largest, smartest organic farm shop! Just five minutes away and perfect for stocking up on organic meats and treats. There are also a butchers, bakers, creamery, grocery and wine section

The Cotswold Traiteur in Moreton-in-Marsh for delicious gourmet take-home meals prepared by a local chef

Home delivery

Tesco – www.tesco.com

Ocado - www.ocado.com.

Things to do - activities and pampering

Our top recommendations for activities and pampering are below.

Paintballing

Paintballing is held in a wood at Blockley. Visit www.cotswoldquads.co.uk for details or phone 07836 657397. There's also information on the website about country pursuits – which are provided by Rob Ireland (see above).

Clay pigeon shooting and other Country Pursuits

Visit **Rob Ireland Country Pursuits** in Aston Magna, near Moreton-in-Marsh for an exciting range of country pursuits. From a couple of hours of quad biking or clay pigeon shooting to a whole day of activities with a steak barbecue, you can design your own day. Rob's website is www.robireland.co.uk and his phone number is 07860 783013.

Horse riding

Sturt Farm Stables 01993 822778, between Burford and Witney offers various riding lessons and caters for all levels of riders. Adults and children welcome – the minimum age for children is 4 years. www.sturtfarmstables.co.uk

Further afield is **The Vine Stables**, near Broadway offering hacks and lessons for individuals or groups. Their telephone number is 01386 584250 and the website is www.broadway-cotswolds.co.uk.

Fishing

Lemington Lakes 01608 650872

Top quality coarse fishing on lakes in pretty, peaceful surroundings near Moreton-in-Marsh. With a cafe overlooking the lakes, a tackle shop and fishing tuition on offer this is a great place for everyone.

Chad Lakes Fishery, Bledington 01451 831470

Coarse fishing and expert tuition available. Email: info@discoverycarp.com

Golf

Lilley Brook Golf Club, Cheltenham 01242 526785

18 hole parkland course in a glorious setting. Visitors welcome weekdays and weekend afternoons.

Wychwood Golf Club, Lyneham, Chipping Norton 01993 831841

18 hole, wooded course and a driving range.

Pampering

If you would like some pampering in the comfort of your holiday house Kerry Belinda heads a team of mobile beauty therapists, based in nearby Moreton-in-Marsh. Kerry offers a full range of beauty treatments, in either full sessions, or mini-treatments for large groups. Kerry's website is www.cotswoldweddingbelles.co.uk, tel 07768 768208.

Top things to do with children

There are many great places to go out with children in the Cotswolds and we've listed our top recommendations below. There is lots to see at many of these places so be prepared for a long day out!

Cotswold Wildlife Park, Burford. Open every day except Christmas Day. 01993 823006
Fantastic parkland setting with a train ride through the grounds in peak season, an adventure playground, café and of course lions, zebras, hippos, penguins, fruit bats and monkeys to name just a few of the animals.

Cotswold Farm Park, Near Guiting Power. Open March – September. 01451 850307
Especially for younger children, a great place to feed the animals, ride on a tractor and learn about rare breeds. Batsford Arboretum and the Falconry Centre, Bourton-on-the-Hill
Next door to each other, the Batsford Arboretum has some lovely woodland walks and is spectacular in the Spring and Autumn. There is also a great café with wonderful views, delicious homemade cakes and a garden centre. www.batsarb.co.uk. At the Falconry Centre you can watch exciting displays of falconry. www.cotswold-falconry.co.uk

Bourton-on-the Water

Touristy but very pretty with the stream running through and lots to do for children including: Birdland Park and Gardens – open all year. www.birdland.co.uk/
Miniature Village
Cotswolds Motor Museum with the TV character Brum. www.cotswold-motor-museum.co.uk
Miniature Railway exhibit within the Toy Shop on the main High Street

Moreton-in-Marsh

For a quick trip out there is a little playground opposite Warner Budgens in Moreton-in-Marsh suitable for younger children. Pop into Ask Pizza for a quick meal or visit Tilly's for tea and cakes.
Hidcote Manor Gardens, Hidcote, near Chipping campden. Open March to September
One of the most visited National Trust gardens in the UK, Hidcote is a beautiful place and fun for children as there are lots of garden "rooms" and grounds to run around in. A short stroll away is Hidcote Manor Farm which is a lovely spot for picking your own strawberries, raspberries and tayberries.

Woodstock and Blenheim Palace. 08700 60 20 80

As well as the Palace there is an adventure playground, butterfly farm and miniature train. In Woodstock there is the local Oxfordshire museum on the High Street which is free and worth popping into for a quick visit and a coffee and cake in the airy glass-fronted café.

Warwick Castle. Open all year. Info 0870 442 2000/ booking 0870 442 2371

Definitely a whole day out. Arrive early to avoid ticket queues. Jousting, archery, falconry, medieval displays and mighty trebuchet catapult throughout the Summer. Ice rink in December.

Stratford-upon-Avon

Apart from all the connections with Shakespeare, Stratford is a great place for picnics, boating and shopping. You can park at the Butterfly Farm Car Park (follow directions to the Butterfly Farm as soon as you enter Stratford) or the Sports Ground Car Park which is just to the left of the Butterfly Farm Car Park. Adjacent to the river and the car parks there is a large playground appealing to a wide range of ages. There are always

Top things to do with children

boats to hire or boat trips in the summer and the Butterfly Farm is worth a visit – great for a rainy day as it's warm and dry inside! 01789 299288

Corinium Museum, Cirencester. Open Monday –Saturday 10-5, Sunday 2-5. 01285 655611
Holds holiday events and drop in activities.

Top places to visit & shop nearby

Stow-on-the-Wold

There are many good restaurants, pubs, cafes and antique shops in Stow-on-the-Wold. You can park in the town square and wander around the interesting range of shops.

Chipping Norton

Close to the Rollright Stones and in the middle of an Area of Outstanding Natural Beauty, Chipping Norton is a thriving, market town packed with a theatre, book shops, and art galleries as well as High Street favourites such as WH Smith and Boots.

Daylesford Organic Farm Shop and Café

The UK's smartest, entirely organic farmshop, the renowned Daylesford is 5 minutes away and you may want to treat yourself there in the Hay Barn Spa or savour delicious food in the smart organic café or shop. Choose from the butcher, the baker, the fishmonger and the grocery. For indulgences there are homeward and clothing items to browse.

Moreton-in-Marsh

Popular market town with a good Warner Budgens, selling very good quality food with lots of local produce and The Cotswold Cheese Shop, selling a wide variety of bread and delicatessen food. Tillys is good for bread and cakes.

Chipping Campden

Wide selection of tea shops, restaurants, pubs and shops. The Cotswolds House Hotel has Hicks on the Terrace – enjoy a drink, cake or lunch on the terrace and enjoy the gardens designed by Paul Williams, local garden designer.

Farmers' Markets

Farmers' markets are held throughout the year at different venues in the Cotswolds. For more information on this and other events in the area visit www.cotswolds.com.

Useful information

Kite's Gate Cottage at a glance

Kite's Gate Cottage:

- Sleeps up to six people
- Three bedrooms, of which two have ensuite bathrooms
- One shared bathroom
- One double room, one twin room and one double/twin room

Cooking and Dining

- Double oven and hob
- Dining table seats six people comfortably
- Open plan living, dining and kitchen
- Charcoal BBQ
- Fantastic chef available for a special meal or throughout the weekend
- Drop-off meals available
- Walk to fantastic pubs in Kingham
- Excellent award winning Cotswold pubs, cafes and restaurants nearby including Daylesford Cafe
- Online deliveries

Children Welcome

- Toys, books and DVDs for children
- Shared indoor heated swimming pool
- Outdoor games
- Cots available
- High chairs available

Where We Are

- The postcode is OX7 6YL
- The nearest village is Kingham
- The nearest station is Kingham, a 15 minute walk or 4 minute drive
- The nearest airports are Coventry and Birmingham
- Taxis available
- Parking for ten cars

Things to Do Inside

- Shared heated indoor swimming pool, open all year
- Shared Turkish steam room
- Sky TV
- DVD player and DVDs
- Wi-fi
- Sequoia Room with TV, surround sound speakers, full Sky Movies and Sports
- Things to Do Outside
- Shared all-weather tennis court
- Croquet set

Useful information

- Frisbee, Boules
- Five acres of beautifully landscaped gardens and woodland

Activities

- Country pursuits available nearby, including clay pigeon shooting and archery
- Fishing
- Paintballing
- Golf
- Pampering and beauty treatments at the house

Top Things to Do for Children

- Cotswold Wildlife Park
- Batsford Arboretum and Falconry Centre
- Cotswold Farm Park
- Blenheim Palace

Payment process

- We take a one third deposit at the time of booking
- The balance is due three months before the date booked

Cautionary deposit

- £500 refundable deposit

House restrictions

- No pets allowed
- Noise policy in place
- No fireworks please
- Not suitable for stag parties

Arrival and Departure

- Check in 4pm
- Check out 4pm on a Sunday
- Check out 10am on other days

What's included

- Linen
- Towels
- Welcome hamper
- Essentials
- Utilities
- Extra housekeeping available on request

Guest reviews

Our guests have given us lovely feedback about Kingham and our chef.

"We had a marvellous week at Kingham. We were all very impressed with the facilities and all 16 of us from age 75 to 7 were very content with our stay. I would strongly recommend it!". *Ursula*

"Thank you! It was a lovely weekend and Benson of Broadway were very good too - enormous quantities of food." *Esther*

"We had such a wonderful weekend - the property was absolutely perfect." *Catherine*