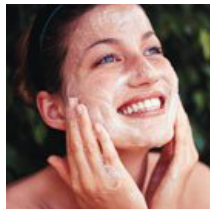


**kate & tom's**

*Extraordinary holidays, celebrations & adventures*

---



## Enjoying your stay at Mangerton House

*Everything you need to get the most out of your stay*

---

# Contents

---

Arrival . . . . .	.3
<i>Where We Are</i> . . . . .	3
<i>Check in and check out</i> . . . . .	3
Getting to us . . . . .	.4
<i>Directions to Mangerton House</i> . . . . .	4
Cooking & dining - chef services. . . . .	.5
Cooking & dining - great places to eat & drink . . . . .	.6
Cooking & dining - shopping for food . . . . .	.8
Private Beach House and Boat. . . . .	.9
Things to do - activities and pampering . . . . .	10
Top things to do with children. . . . .	12
Top places to visit & shop nearby . . . . .	13
Useful information . . . . .	15

# Arrival

---

## Where We Are

Property Name: Mangerton House  
Address: Mangerton House, Mangerton lane , Mangerton DT6 3SG  
County: Dorset  
Postcode: DT6 3SG

## Check in and check out

Check in time: 4pm  
Contact name for check in: Gearoid or Jenny  
Contact number for check in: 07928 388351 or 07525163514

Check out time for 2 night weekend booking: 4pm on Sunday  
Check out time for 3 night weekend booking: 10am  
Check out time for 7 night week bookings: 10am

# Getting to us

---

The best postcode to use with SatNav is: DT6 3SG  
The nearest train station and distance is: Crewkerne, approximately 13 miles away

Taxis are available: West Dorset Taxi's, Bridport 07876 798770

## Directions to Mangerton House

**Arriving by car from London**, take the M3 out of London and then:

From A303

Off the M3 (exit 8) for a303 and then follow this road all the way to A356 (about 75 miles). Follow signs to Crewkerne and then out of Crewkerne take the A3066 to Beaminster. Just under 5 miles out of Beaminster take a left turn onto Townsend Way (it's just before a roundabout called Gore Cross). Drive through a modern housing estate and then out on Mangerton Lane. Drive for a mile or so past Mangerton Mill and leaving a sign for Highgrove farm to your left, 100 yards after that sign turn into Mangerton House. If you see a field barn on your right and a row of cottages to your left you have gone too far!

Using the M3 all the way

From bottom of M3 take the M27 (west) and then the A31 and A35. When you arrive at the first roundabout in Bridport take the 3 exit (A3066). Just after the Gore cross roundabout take the right turning signposted Powerstock, Mangerton Mill etc.. Drive through a modern housing estate and then out on Mangerton Lane. Drive for a mile or so past Mangerton Mill and leaving a sign for Highgrove farm to your left, 100 yards after that sign turn into Mangerton House. If you see a field barn on your right and a row of cottages to your left you have gone too far!

## Arriving by train

If you prefer you can take a train from Waterloo to Crewkerne and we will pick you up...it's 20 mins from the station to the house and a 2 and a half hour journey (very pleasant stress free way to arrive) trains run at 20 minutes past the hour.

# Cooking & dining - chef services

---

You'll find our top recommendations below. If you do discover any other gems please do let us know and we will share them with other guests visiting the property.

## **Lyme Bay Field Kitchen**

From initial menu planning to taking care of the washing up, Lyme Bay Kitchen can do everything for you, leaving you free to sit down and relax! Menus can be designed especially for you or opt for the delicious dishes already on offer, using only the finest local and seasonal produce available.

"Our caterers did a fantastic job, James was brilliant!" Richard

"We also decided to arrange a caterer for both Friday night and Sunday lunch as we were such a large group and they cannot be praised highly enough." Jules

[www.lymebayfieldkitchen.co.uk](http://www.lymebayfieldkitchen.co.uk) Tel: 0790 5869764

## **Local produce that the area is renowned for**

Wonderful fish, meat, ice cream cakes...the list goes on! Take a look at the shopping section for details of local butchers, fishmongers, farm shop and bakers.

# Cooking & dining - great places to eat & drink

---

There are many excellent dining places nearby and we have listed a small sample below. If you want to travel a little further there are some award-winning restaurants to choose from.

## **Pubs**

**The Three Horseshoes** at Powerstock DT63TF

Near the church, with a garden overlooking the valley, good food and friendly service. 5 minutes drive away.

**The Marquis of Lorne** at Nettlecombe DT6 3SY

Just beyond the turning to Powerstock, friendly local with a small children's playground. 5 minutes drive away.

**The Anchor Inn** at Seatown, DT6 6JU, 01297 489215

Pub right on the beach, down some narrow lanes off the road out of Bridport towards Lyme Regis (A35). 20 minutes drive away.

## **Restaurants**

**The Wild Garlic**, Beaminster, Tel: 01308 861446

Run by Mat Follas, a past Masterchef champion who likes to forage for ingredients... personally we have been disappointed with the food but it does receive good reviews.

**Hive Beach Café**, Nr Bridport, Tel: 01308 897070

Winner of several beachside restaurant awards it doesn't ever disappoint. You may have to wait for a table as no bookings are taken and you queue for food ordering. On a sunny day with a glass of Rose their fish is the best Dorset has to offer. They have just opened 'The Watchhouse Café at west bay - well worth a visit too.

**Hix Oyster and Fish House**, Lyme Regis, Tel: 01297 446 910

Overlooking the Cobb. Check out this review from The Sunday Times:

"Hix Oyster & Fish House, Cobb Road, Lyme Regis, Dorset — this must be the most romantic address and breathtaking location of any restaurant in Dorset, or indeed, the whole of England. Yes, it was a day of pearly luminescence, with the spring sun bouncing off plump green hills and sheer cliffs, with seagulls wheeling in the sky and the sea a soft, sheeny blue, and everything looks better in the sunshine. But the restaurant is perched on a steep hill above the Cobb and has a deck like the prow of a ship, complete with prow and flagpole, where you can sit and sip Manzanilla, and slip the sea down your throat while watching the fishing smacks chug in and out, and the toddlers paddle in the strand below. It is impossible not to feel a faint twinge of wellbeing."

[www.hixoysterandfishhouse.co.uk](http://www.hixoysterandfishhouse.co.uk)

**River Cottage HQ and River Cottage Canteen and Deli**, Tel: 01297 631 715

About 15 minutes drive away are River Cottage HQ, home to Hugh Fearnley-Whittingstall and his team, cookery courses and other events, and the River Cottage Canteen in Axminster, where you can sample some of Hugh's menus

[www.rivercottage.net](http://www.rivercottage.net) and [www.rivercottage.net/canteens/axminster](http://www.rivercottage.net/canteens/axminster)

## Best places to eat out with children

**Penny Blacks**, Lyme Regis, Tel: 07980 991685

If you want to escape the hoards on the seafront head to the family-run Penny Black cafe, a hidden gem behind the Post Office in Lyme Regis. Lovely food, with a daily specials board. The courtyard at the back is a lovely, peaceful suntrap.

**The Harbour Inn**, The Cobb, Tel: 08721 077 077

Situated on the beach front, overlooking the Cobb and Lyme Bay, the family-run Harbour Inn offers al fresco style dining for all the family.

[www.harbourinnlymeregis.co.uk](http://www.harbourinnlymeregis.co.uk)

# Cooking & dining - shopping for food

---

## **Shopping in Lyme Regis**

Lyme Regis has a wealth of independent shops selling freshly baked pies and pasties; freshly made sandwiches and baguettes; cakes, pastries and fudge; locally grown, organic, whole food; specialist imported foods; and organic fruit and vegetables.

### **Supermarket**

#### **The Co-operative Food**

38 Broad Street  
Town Centre, Lyme Regis  
Tel: 01297 442 082

#### **Tesco Express**

40-41 Broad Street  
Town Centre, Lyme Regis  
Tel: 0845 671 9366

### **Wine Merchant**

Lyme Bay Winery, [www.lymebaywinery.co.uk](http://www.lymebaywinery.co.uk)

### **Butchers**

G W Meats, [www.gw-meats.com/](http://www.gw-meats.com/)

Stonking Sausages, [www.stonkin-sausages.com](http://www.stonkin-sausages.com)

### **Cheese**

Town Mill Cheesemaker, [www.townmillcheese.co.uk](http://www.townmillcheese.co.uk)

### **Fishmonger**

The Old Watch House, [www.theoldwatchhouse.com](http://www.theoldwatchhouse.com)

### **Farm Shop**

Millers Farm Shop, Kilmington, [www.millersfarmshop.com](http://www.millersfarmshop.com)

### **Major supermarket online orders**

[www.waitrose.com](http://www.waitrose.com)



# Private Beach House and Boat

---

## **The Beach House**

We are very fortunate at Mangerton House to have access to a 3 bedroom beach house at Burton Bradstock uniquely positioned on the Chesil beach. Fully functional with a bathroom and kitchen the property sleeps up to 8 people and can be rented as part of the Mangerton House booking. Please enquire for an accurate quote for your party and availability.

### *Directions to The House on Hive Beach*

From London, take the M3 then follow the M27 West. Take the A31, then the A35. After Dorchester it's about 14 miles before you find a sign to Burton Bradstock, take a left turning. When you arrive in the village take the main road left. Go past a pub on your left and over a bridge. Follow the road round leaving a garage on your right (with a Spar). A few hundred yards later take a right turn onto Beach road. Over the brow of the hill you'll go into a National Trust car park. The House is visible at the far left hand corner of the car park

## **The Boat**

We also rent out a 250 HP cobra rib (with or without a driver), 7.5 metres long that can comfortably take 8 people to Lyme Regis for the morning or perhaps for a longer day trip to Durdle Door.

By prior arrangement, and subject to driver availability, we are happy to organise boat hire for the exclusive use of our guests.

# Things to do - activities and pampering

---

Our top recommendations for activities and pampering are below.

## **Clay pigeon shooting and Adventure Sports**

**Experience Days** Blandford Forum DT 11  
[www.experience-days-south-west.co.uk](http://www.experience-days-south-west.co.uk) Tel: 0208 133 9327

## **Horse riding**

**Vineyard Stables** Wooton Fitzpaine DT6 6DF  
Small, relaxed and friendly stables.  
[www.vineyardstables.co.uk](http://www.vineyardstables.co.uk) Tel: 07872 022 116

## **Fishing**

Angling is another popular option, especially down by the Cobb where you'll see a bevy of posters advertising deep-sea trips for catching cod, conger, skate, etc. Alternatively, a quiet trip around the bay might suit you better; in which case catching mackerel is a more likely outcome. Beach casting and pier fishing are also popular. Mackerel fishing: Harry May Fishing Trips [www.lymeregis.com/marief](http://www.lymeregis.com/marief) Tel: 07974 753287  
Fishing tuition: Learn2Fish Fishing Tuition Tel: 07506 729891

## **Watersports**

### **Lyme Regis Power Boat Club and Lyme Regis Sailing Club**

The sea is the focus of a wide range of sporting activities. Swimming and bathing are top of the list, thanks to an award-winning environmental protection scheme ensuring the waters around the town are clean and safe – a fact that also shouldn't be lost on windsurfers, water-skiers or sailors. Check out the Sailing Club and Power Boat Club for information about becoming a temporary holiday member.  
[www.lrpbc.co.uk](http://www.lrpbc.co.uk) and [www.lymeregissailingclub.co.uk](http://www.lymeregissailingclub.co.uk)

## **Golf**

### **Lyme Regis Golf Club**

The course occupies a cliff top site with coastal views towards Portland Bill and overlooks the historic town and World Heritage Site of Lyme Regis.  
[www.lymeregisgolfclub.co.uk](http://www.lymeregisgolfclub.co.uk) Tel: 01297 442963

## **Walks and Beaches**

We recommend a drive to Burton Bradstock and then walk west or east either on the beach or the clifftop path. West takes you past freshwater bay to west bay and then beyond to Eype and then the golden cap and finally to Seatown. That's a good day out for keen walkers!  
East takes you along the Chesil beach to West Bexington and beyond.

## **Pampering**

### **My Personal Sanctuary**

A fabulous variety of Party Packages and an Organic Treatment Menu to choose from in the comfort of your holiday home, including the award winning Green People products.  
[www.mypersonalsanctuary.co.uk/treatment-days](http://www.mypersonalsanctuary.co.uk/treatment-days)

### **Boat**

Please enquire about renting the boat for a half day or more (from £250 skippered by Gearoid) it's 7.55m Cobra rib with a 250 hp outboard and can comfortably accommodate 8 people.

### **Campsite**

Down by the river we can set up a camp for you and to prepare meals on an open fire and a handmade pizza oven, we'll also take the BBQ down there for you. Marshmallows at night time are a favorite with the kids.

### **Gym**

there is a treadmill, a cross trainer, a multi-gym and a bike. They should only be used if you are familiar with the equipment. Children under the age of 14 are forbidden from using the gym.

### **Mangerton River**

There's a rowing boat, canoe and a kayak available for exploring the Mangerton River. It won't get you into any trouble or take you too far away - perfect with or for the kids. Younger children must be supervised at all times near and on the water. Some life preservers are available and should be used by less able swimmers.

There are brown & rainbow trout to fish in the River and we have also seen crayfish but the local otter's keep stocks of both in check!

# Top things to do with children

---

The kids can go wild in the grounds – but if you'd like to go further afield, it's just a short drive to the beaches and harbour where they will love building sandcastles at the beach, searching for crabs in the harbour and hunting for fossils along the Jurassic Coast.

## **Fossil Hunting and The Jurassic Coast**

Explore the Jurassic Coast World Heritage Site which tells the story of 185 million years of the Earth's history – a 95 mile stretch from Swanage in the East to Exmouth in the West,

Take a fossil hunting walk and discover the fossilised remains of giant ichthyosaur, plesiosaur, belemnites and ammonites that can be found on the beach.

## **Guided fossil walks**

Brandon Lennon, local Lyme Regis professional fossil collector with 25 years experience, can take you on a guided tour along part of Lyme Bay's famous Jurassic Coast.

[www.lymeregisfossilwalks.com/](http://www.lymeregisfossilwalks.com/) Tel: 07944 664 757

For further information on the Jurassic Coast visit the official Jurassic Coast website [www.jurassiccoast.com](http://www.jurassiccoast.com)

## **Lyme Regis Philpot Museum**

Packed with fascinating displays. Find out about Lyme's early and maritime history, its internationally important geology, its fossils and the many significant writers connected with the town, from Jane Austen to John Fowles.

[www.lymeregismuseum.co.uk](http://www.lymeregismuseum.co.uk) Tel: 01297 443370

## **Lyme Regis Marine Aquarium**

Presents local fish and marine life of the Jurassic Coast in an historic building on the Cobb - discover the creatures of the seashore and deeper waters of Lyme Bay.

[www.lymeregismarineaquarium.co.uk](http://www.lymeregismarineaquarium.co.uk) Tel: 01297 444230

## **Alice's Bear Shop and Teddy Bear Hospital** Lyme Regis

Where the Author of the Alice's Bear Shop range, Rikey Austin, writes the wonderful Alice stories and brings the Teddy bears to life. The Shop is filled with Teddies and soft toys in need of a cuddle!

[www.therealalicesbearshop.co.uk](http://www.therealalicesbearshop.co.uk) Tel: 01297 444589

## **Dinosaurland** Lyme Regis

An old fashioned dinosaur museum. The private museum contains a spectacular collection of the local Jurassic marine fossils. The collection grows each year and is now probably one of the best fossil collection on public display in SW England.

[www.dinosaurland.co.uk](http://www.dinosaurland.co.uk) Tel: 01297 443541

# Top places to visit & shop nearby

---

## Lyme Regis

The old town, dating back to the 14th century, is an ideal place to walk and explore the local shops, art galleries, newly replanted gardens with myriad places to stop to eat and drink. Built around the River Lym, Lyme has its own working Water Mill, recently refurbished to include an electricity generator. Lyme Regis is very special in that it is probably the smallest town in the country to boast its own cinema, theatre, and museum.

The Cobb attracts visitors not just for its visual splendour and its magnificent naval architecture, but also for its connections with great literature. Indeed, people come from all over the world to see the steps where Louisa Musgrove fell in Jane Austen's *Persuasion*; or to see where Meryl Streep stood, looking forlornly out to sea, in the film adaptation of John Fowles' *The French Lieutenant's Woman*. And art lovers are drawn to Lyme for both its beautiful scenery and for its wide range of art galleries.

Marine Parade is a great place to walk, sit, enjoy the views and visit its small shops and eating places. Here the seafront facilities has benefited from the restoration of the Marine Parade Shelters. The town and surrounding area have many attractions and host a range of family-centred events, including a Jazz Festival, a Fossil Festival, Life Boat Week and a Regatta & Carnival Week.

Lyme Regis Tourist Information Centre  
Church Street, Lyme Regis, DT7 3BS  
Tel: 01297 442138      01297 442138  
[www.lymeregis.org](http://www.lymeregis.org)

## National Nature Reserve at the Undercliff

Walkers will love to explore the National Nature Reserve at the Undercliff. This seven mile long undeveloped woodland is part of the South West Coastal Path and stretches west towards Axmouth and Seaton. Going east from Lyme, walkers can follow the same path or take the coastal footpath, part of the 650 mile South West Coastal Path, towards Charmouth and to Golden Cap. At 629ft, this is the highest point on the south coast. Other dry land activities abound: golfing, bowling, pony trekking and biking are just a few of the options available.

## Shopping in Lyme Regis

Lyme Regis has a wealth of independent shops selling unusual gifts, clothes, books, fossils and antiques, as well as a range of fantastic locally produced food.

You can buy freshly baked pies and pasties; freshly made sandwiches and baguettes; cakes, pastries and fudge; locally grown, organic, whole food; specialist imported foods; and organic fruit and vegetables.

There are gift shops selling souvenirs of Lyme, as well as teddy bears and sweets. Shops specialising in rocks and fossils as well as jewellery can also be found. Lyme has a number of art galleries throughout the town and shops specialising in antiques and collectables.

There are a wealth of clothes shops for children and adults, selling sportswear and surfing gear; outdoor gear;

## Top places to visit & shop nearby

---

shoes and trainers; hats; bespoke designer dresses and vintage clothing.

The town also has a selection of national chains (Boots, Co-op & Tesco's), three banks and a Post Office and a wide range of local chains and individual local shops.

### **The Golden Cap**

Stunning coastline and England's only natural World Heritage Site

The great rocky shoulder of Golden Cap offers magnificent views at every compass point. On a clear day you can see across Lyme Bay to Dartmoor - well worth the effort of the walk uphill.

### **Tyneham**

Walk around this ghost village, accessible only at weekends when the military firing range is not in use. The village and 7,500 acres of surrounding heathland and chalk downland were commandeered just before Christmas 1943 by the War Office and the 252 inhabitants were never allowed back. A visit here leaves a lasting impression, especially on children, when they see the old village school. #  
[www.isleofpurbeck.com/tyneham.html](http://www.isleofpurbeck.com/tyneham.html)

### **Bournemouth**

It's bucket-and-spade paradise at Bournemouth, which has an incredible seven miles of beaches. Nestling beneath the cliffs, the bay enjoys its own micro-climate and some of the warmest sea temperatures in the UK.

# Useful information

## MANGERTON HOUSE AT A GLANCE

### Bedrooms and bathrooms

- Sleeps up to 20 guests
- 10 bedrooms
- One family suite comprising two bedrooms with bathroom
- The Apartment sleeps up to 4
- The Pool House sleeps up to 4
- Downstairs WCs

Bedrooms	Sleeps	Beds	Features
Bedroom 1	2	Super King	En-suite + bath in room
Bedroom 2	2	King	En-suite
Bedroom 3	2	Twin	En-suite
Bedroom 4	2	King	En-suite
Bedroom 5	2	King	En-suite
Bedroom 6	2	King	Private bathroom
Bedroom 7	2	King	En-suite
Bedroom 8	2	Twin	
Bedroom 9	2	King	En-suite
Bedroom 10	2	Twin	En-suite

### Cooking and Dining

- Large kitchen/ dining room
- Back kitchen
- Dining Table seats 20 comfortably
- Fantastic chef available for a special meal or throughout the weekend
- Gourmet frozen drop off meals from Taunton branch of Cook available
- Range cooker
- BBQ
- Outdoor tables and chairs on terrace
- Great pub
- Great dining nearby
- Online deliveries

### Things to Do Inside

- Stunning heated indoor swimming pool - 10m x 5m
- Gym with cardio and multi gym facilities
- 3 x Sky HD TVs in the property including a 3D plasma TV in the Barn
- Wi-fi
- Sonos sound system integrated throughout the living spaces

### **Things to Do Outside**

- Outdoor natural swimming pond
- Fourteen acres of stunning gardens and woodland
- Three bedroomed beach house at Burton Bradstock on Chesil Beach (optional extra – sleeps 4-6).

### **Activities**

- Hire a rib, with or without driver, for a day out or thrilling adventure
- Water Sports
- Country pursuits available nearby
- Quad Biking
- Pampering and beauty treatments at the house

### **Top Things to Do for Children**

- Spend the day swimming, whatever the weather, in in the indoor pool and outdoor pond
- Make a base camp in your tepee in the grounds and enjoy the swings
- Go fossil hunting on Chesil Beach
- Enjoy the beach from your very own beach house (optional extra)
- Spend the day at Lyme Regis and visit the Marine Aquarium
- Learn to ride a pony
- Head to Abbotsbury for the Children's Farm and Swannery
- Head to Lulworth Cove for some crabbing and walk to Durdle Door
- Visit the animals at Monkey World Ape Rescue Centre
- Ride on the Swanage Railway

### **Top Things to Do for Team Getaways**

- Conference facilities in the Barn
- Hire some ribs for a day of speed and action or touring
- Book a chef for all your catering needs

### **Where We Are**

- The nearest town is Bridport
- The nearest stations are Crewkerne and Maiden Newton (2.5 and 3 hours from London)
- The nearest regional airports are at Bournemouth and Exeter
- Taxis available
- Plenty of parking

## ABOUT YOUR BOOKING

### **Payment process**

- We take a one third deposit at the time of booking
- The balance is due three months before the date booked

### **Cautionary deposit**

- £2,000 refundable cautionary deposit



## Useful information

---

### **House restrictions**

- Noise policy in place
- No fireworks please
- Not suitable for stag parties.

### **Arrival and Departure**

- Check in 4pm
- Check out 4pm on a Sunday
- Check out 10am on other days

### **What's included**

- Linen
- Towels
- Handwash and shower gel
- Essentials
- UtilitiesPlease
- Please bring your own swimming towels