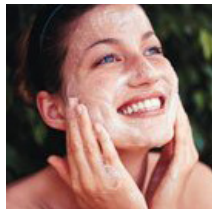
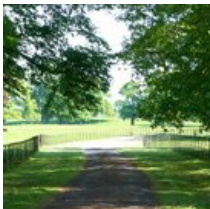


kate & tom's

Extraordinary holidays, celebrations & adventures



Enjoying your stay at River Barn

Everything you need to get the most out of your stay

Contents

| | |
|--|----|
| Arrival | .3 |
| <i>Where We Are</i> | 3 |
| <i>Check in and check out</i> | 3 |
| Cooking & dining - chef services. | .5 |
| Cooking & dining - great places to eat & drink | .6 |
| Cooking & Dining - Shopping for Food | .9 |
| Things to do - activities and pampering | 10 |
| Top things to do with children. | 12 |
| Top places to visit and shop nearby | 13 |
| Useful information | 14 |
| Guest Reviews | 16 |

Arrival

Where We Are

Property Name: River Barn
Address: Brooklands Barn
Priory Lane
Arundel
County: West Sussex
Postcode: BN18 0BG

Check in and check out

Check in time: 4pm

Contact name for check in:
Contact number for check in:

Check out time for 2 night weekend booking: 4pm Sunday
Check out time for 3 night weekend booking: 10am Monday
Check out time for 7 night week bookings: 10am Friday

The best postcode to use with Satnav is: BN18 0BG

Nearest Train station and distance: Arundel, 2.8 miles away, a 7 minute drive

The nearest airport is: Gatwick, a 53 minute drive

Getting to Us

The best postcode to use with Satnav is: BN18 0BG

Nearest Train station and distance: Arundel, 2.8 miles away, 7 minute drive

Directions:

Coming from the west along the A27 – when the A27 dual carriageway from Chichester changes to single lane traffic, heading into Arundel, you will see the White Swan Hotel on your left. Take the right hand turning signposted Tortington, opposite the White Swan Hotel. Take the left fork and follow the single track lane until you come to another fork in the road. Take the left fork and follow this lane along until you come to 'Brooklands' on your right. Turn right into the driveway and left into the front courtyard.

From the east, follow the A27 just past Arundel, and then from the roundabout that intersects the A284 and the A27, take the exit signposted Ford/Climping (Ford Road). Priory Lane is about 1 mile south from the roundabout, it is the next turning on the right after Maxwell Road. Once on Priory Lane, Brooklands is the first left and then left again into our courtyard driveway.

There is only limited guest parking in the courtyard and it is mainly to be used for key collection and luggage drop off. Guest parking is situated at the rear of the property. Go left out of the courtyard and left again, and you will see the signs for Guest Parking.

Satellite navigation: You may find that our postcode does not pinpoint our location exactly. These are the GPS coordinates: North 50.845250 West 0.572570 which you can enter into Google map or Sat Nav.

Travelling by rail: Arundel station has direct links from London Victoria and London Bridge (1.5 hours). Arundel station is a 5 minute taxi ride from Brooklands. Castle Cars is located at Arundel Station (01903 884444).

Cooking & dining - chef services

You'll find our top recommendations below. If you do discover any other gems please do let us know and we will share them with other guests visiting the property.

Brooklands offers self-catering accommodation only. The following catering companies we recommend, should you wish to have help with the catering during your stay with us:

The Gourmet Chef

01903 889515

Email: brooklandsbarn@gmail.com

The Gourmet Chef has great pleasure in offering you their catering services for that special occasion. Whether your vision is fine dining or funky street food, hosted at home, a venue or outdoor location, they would be delighted to design a menu for you and make it happen in your chosen setting.

www.thegourmetchef.co.uk/catering-services/

SJI Food & Service

07784 775532

Wedding and function caterers in Chichester, West Sussex. SJI Food and Service believes in good value for money and therefore strives to bring you fine quality produce, complimented by the very best prices.

www.chichestercaterers.com/

Cashew catering

07786 226220

Vegetarian catering. A passion for nutrition, creative expression & love for life all combine to result in refreshing, vibrant vegan, vegetarian & raw food catering at its best. Vegan and vegetarian catering, weddings and raw foods, plus cookery courses.

www.cashewcatering.co.uk/

Cooking & dining - great places to eat & drink

Nearest pub

Ship and Anchor, Ford Marina, Station Road, Arundel BN18 0BJ (1.1 miles away/22 minute walk)
01243 551747

Pubs

St. Mary's Gate Inn, London Road, Arundel BN18 9BA (2.6 miles away/6 minute drive)
01903 883145

St Mary's Gate Inn is a beautiful traditional 16th Century building that has long been at the heart of the Arundel community. Amongst the real log open fires, comfy seating and traditional hospitality you will find hearty food, prepared fresh and daily by their fantastic chef. They house a selection of Badger Ales, brewed by Hall & Woodhouse and their wine selection is vast from around the world.

www.stmarysgate.co.uk/

Kings Arms, 36 Tarrant Street, Arundel, West Sussex BN18 9DN (2.7 miles away/8 minute drive)
01903 882312

The Kings Arms is the oldest pub in Arundel (circa 1625), tucked away in the heart of the town but a short walk away from the High Street just along Tarrant Street. Popular with locals but welcoming to everyone, the pub offers a brilliant atmosphere and a choice of 4 real ales.

www.sjcptheatre.com/kingsarms/

The Swan Hotel, 27-29 High Street, Arundel, West Sussex BN18 9AG (2.9 miles away/10 minute drive)
01903 882314

A Grade Two listed building in the heart of the West Sussex market town of Arundel, The Swan Hotel is a traditional country pub with rooms, affording those enjoying the peaceful surroundings of the South Downs to stay a little longer and sample our fine food, too.

www.swanarundel.co.uk/

Arun View Inn, Littlehampton, West Sussex BN17 5DD (3.9 miles away/10 minute drive)
01903 722335

The Arun View Inn is situated on the side of the River Arun in Littlehampton. The Arun View Inn offers a relaxed venue for a quiet drink or meal.

www.thearunview.co.uk/

Cooking & dining - great places to eat & drink

Six Bells, 168 Lyminster Road, Wick, Littlehampton BN17 7PS (4.6 miles away/11 minute drive)
01903 713639

The Six Bells at Lyminster is a charming old coaching inn renowned for its superb food and great atmosphere. The original features of this 300 year old Sussex flint building have been retained.
www.thesixbellslminster.co.uk/

Restaurants

The Town House, High Street, Amberley, Arundel, West Sussex BN18 9AJ (2.5 miles away/7 minute drive)
01903 883847

Stunning architecture set this delightful hotel apart. Situated in a premier position opposite Arundel Castle. A great location for a few days break and a fine dining restaurant. The Townhouse has also been recommended in The Michelin Guide since 2008.
www.thetownhouse.co.uk/cmspages/index.php

The Bay Tree, 19A-21 Tarrant Street, Arundel BN18 9DG (2.6 miles away/7 minute drive)
01903 883679

They serve a contemporary European menu using only the finest and freshest ingredients in a beautiful setting, a 16th century timber framed building with an elegant and calming cream and pale green decor. Diners can relax in the stylish interior or on our pretty sun dappled terrace.
www.thebaytreearundel.co.uk/

Butlers Restaurant, 25 Tarrant Street, Arundel, West Sussex BN18 9DG (2.6 miles away/7 minute drive)
01903 882222

A family run restaurant & bar, focusing on serving delicious homemade food along with friendly warm service & value for money. Come and soak up the atmosphere of Butlers, whether it be for a glass of wine, a continental beer, cappuccino, a relaxed lunch or the buzz of the restaurant at night for a dinner with us, we are sure you'll enjoy your time spent here.
www.butlersarundel.co.uk/

Pappardelle Ristorante, 41 High Street, Arundel, West Sussex BN18 9AG (2.9 miles away/8 minute drive)
01903 88202 4/5

Pappardelle Ristorante is the longest running family owned traditional Italian restaurant in Arundel. The restaurant is a traditional fine dining Italian Ristorante with an intimate atmosphere, waiter service at its 11 tables, open lunchtime and evening but closed on Sunday. Booking is recommended.
www.pappardelle.co.uk/

Cooking & dining - great places to eat & drink

Burpham Country House, The Street, Burpham, Arundel, West Sussex BN18 9RJ (5.3 miles away/13 minute drive)

01903 882160

Burpham Country House offers comfort, relaxation and tranquillity together with seriously good food, deep in the Arun Valley in the heart of the new South Downs National Park.

www.burphamcountryhouse.com/

La Campania, 51 High Street, Arundel BN18 9AJ (2.5 miles away/7 minute drive)

01903 884500

Famous for its rustic cuisine the region of La Campania offers a true reflection of Italian lifestyle, embracing all the senses. Situated in the heart of historic Arundel, La Campania has been a destination local since 2010. With its traditional Italian Food, warm atmosphere and welcoming staff, it provides the perfect dining experience for any occasion.

www.la-campania.co.uk/

Best Takeaways

China Palace, 67 High Street, Arundel BN18 9AJ (2.5 miles away/7 minute drive)

01903 883702

India Gate, 3-5 Mill Lane, Arundel BN18 9AH (2.5 miles away/7 minute drive)

01903 884224

www.india-gate.co.uk/restaurant/arundel

Cooking & Dining - Shopping for Food

Best local supermarket

Sainsbury's, 19-23 High Street, Littlehampton, West Sussex County BN17 5EG (4.3 miles away/13 minute drive)
01903 726 824

Waitrose, Avon Road, Littlehampton, West Sussex BN17 6AT (4.4 miles away/13 minute drive)
01903 718 187

Butchers

Arundel Butchers, 19 The Square, High Street, Arundel, West Sussex, BN18 9AD (2.9 miles away/10 minute drive)
01903 882270

Wine Merchant:

Pallant of Arundel, 17 High Street, Arundel, West Sussex BN18 9AD
01903 882288
www.pallantofarundel.co.uk/

Major supermarket online orders

Waitrose, Sainsbury's and Ocado all deliver to River Barn.

Things to do - activities and pampering

Our top recommendations for activities and pampering are below.

Cycling

M's Cycles – Mountain Bike Hire, High Street, Shoreham By Sea BN43 5DB (16.5 miles away/35 minute drive)

A recognised area of outstanding natural beauty, the South Downs National Park offers some of the most breath-taking and invigorating Sussex walks, bike rides and horse rides you could hope for on your holiday. Explore more than 3,000 kilometres of well-signed, well-managed and easily accessible trails by bike, with access to the South Downs from both Arundel and the nearby village of Amberley. If you're feeling really adventurous, there's even the South Downs Way – a national trail which stretches the entire length of the National Park!

www.m-cyclehire.co.uk/

Horse riding

Lavant House Stables, Lavant, Chichester, West Sussex PO18 9AH (12.7 miles away/22 minute drive)
01243 530 460

Lavant House Stables welcome riders of all ages & ambitions for both individual and group riding lessons. Their location near Chichester in the stunning South Downs National Park gives you great riding out opportunities. Children can join our brilliant Pony Club and loan a pony through our Pony Pals scheme. In the school holidays they run horse riding camps, pony activity days, pony owning mornings and more, plus show jumping, dressage and cross country training for all ages and abilities.

For adults, they have a Riding Club, livery services and are part of the fantastic Hoof Take Back the Reins Olympic legacy project to get adults riding again in 2014.

www.lhstables.co.uk/

Windsurfing and Kitesurfing

X-Train, West Wittering, Windsurf Club, West Wittering, Chichester, West Sussex PO20 8AU (19.1 miles away/39 minute drive)

01243 513 077

X-Train was established in 1991 and since then has focused on providing the best windsurf, kitesurf, stand up paddle surf and surf lessons, instruction and courses to thousands of happy customers.

www.x-train.co.uk/

Things to do - activities and pampering

Wine Tasting

Nutbourne Vineyards, Vineyard, Gay Street, Nr. Pulborough, West Sussex RH20 2HH (14 miles away/ 27 minute drive)
01798 815196

Visitors are welcome to walk among the vines, enjoy the beautiful setting and visit the windmill tower to taste and buy the wines. They also offer group tours of the vineyard and winery along with organised tastings. These take place in the wine lodge where buffet or barbecue meals can also be provided.
www.nutbournevineyards.com/

Walking

Brooklands is an ideal location for a walking group to base themselves. Bridget Glynne-Jones is a local walking enthusiast and experienced guide who can arrange and lead tailor-made walks from Brooklands to the surrounding countryside. Whether you'd like a long walk, a short walk, picnic stops, hills or flat – Bridget can provide what you are looking for. Please refer to www.b-footloose.co.uk.

Pampering

For pampering in the comfort of your property, there is a range of treatments available from a local therapist including massage, pedicure, manicure, etc. Please book well in advance.

Please enquire via My Personal Sanctuary (www.mypersonalsanctuary.co.uk) via telephone number 01625 540 557 or email enquiries@mypersonalsanctuary.co.uk.

Top things to do with children

Our top recommendations for outings with children are below.

Arundel Wetland Centre, Mill Road, Arundel, West Sussex BN18 9PB (3.7 miles away/11 minute drive)
01903 883355

Walk with a warden, tour the duckery, visit the Pond Explorer station or spot water voles on the boat safari. Or just relax and enjoy the tranquil surroundings and stunning views of Arundel Castle.
www.wwt.org.uk/wetland-centres/arundel/

Southwater Country Park, Cripplegate Lane, Southwater, Horsham, West Sussex RH13 9HN (22.2 miles away/35 minute drive)
01403 731218

Southwater Country Park offers 90 acres of level surfaced paths which provide an easy-going lakeside walk plus a selection of outdoor activities including an adventure-style play area, orienteering course, and tuition in canoeing and sailing. The park also includes a beautiful wildlife area called The Quarry, which is managed for nature conservation and supports wildlife such as lizards, Kingfishers, Nightingales and various butterflies and dragonflies.

South Downs Light Railway, Pulborough Garden Centre, Stopham Road, Pulborough, West Sussex RH20 1DS (12.2 miles away/22 minute drive)
07518 753784

Their trains will take you on an exciting trip through the gardens from Stopham Road Station. Trains run from March to September and are usually hauled by a real coal burning steam engine. It's great fun for adults and children alike. They have special events throughout the year, please see the website for more details.
www.south-downs-railway.com/

Top places to visit and shop nearby

Arundel

Arundel is a unique and historic market town in the heart of the Sussex countryside, and only minutes from the coast. Dominated by the symbolic Arundel Castle and the rising spire of the town's Cathedral, it nestles within the southern spur of the South Downs. It is also home to Arundel Brewery, which produces a range of award winning bottled beers, such as the famous Sussex Gold. Its uninterrupted views of glorious landscapes, its unique plethora of craft and antique shops as well as a diverse range of restaurants and lovely walks, all make Arundel the perfect place for a weekend away. The no.1 guide to all that's on in Arundel can be found at www.arundel.org.uk

Bognor Regis

There's an incredible range of attractions in Bognor Regis to keep everyone entertained. Famous for Butlin's holiday resort and a clean, safe, family-friendly beach, Bognor Regis also has two Green Flag parks – Marine Park Gardens in Aldwick and Hotham Park. Visitors to Hotham Park can enjoy a boating lake, miniature railway, walks, picnic spots, play areas and more! You can also learn more about the history of the town at Bognor Regis Museum.

Water sports enthusiasts will love this part of the UK's south coast for sailing, windsurfing and other on-the-water activities. If you'd prefer indoor leisure activities, there's Inspire Felpham to the east of the town and the Arena Sports Centre to the north. Golfers can tee off at Bognor Regis Golf Club. There's also seaside mini golf opposite the pier and putting and tennis at Blake's Road Sports Site.

Littlehampton

Visit the family-friendly East Beach and cook on free-to-use BBQs on East Beach Green. Ride the waterside amusements at nearby Harbour Park. Or visit the famously unusual East Beach Café as you walk or cycle along the promenade. You can even take a ferry over to Littlehampton West Beach – a Local Nature Reserve. A visit to the town centre will find many well-known High Street names as well as local independent shops.

Littlehampton Harbour, at the mouth of the River Arun, offers charter and commercial fishing and launching from a public slipway next to the Look and Sea Visitor Centre. You can also get to know Littlehampton's history at the town's Museum which often has local art on display.

Ride the mini railway between Mewsbrook Park and Norfolk Gardens or hire a pedal boat at Oyster Pond. Swimming, badminton and squash are all available at the Swimming and Sports Centre and Littlehampton Golf Club is the only links course in West Sussex.

Useful information

River Barn at a Glance

Bedrooms and Bathrooms

- Sleeps up to 20
- Ten bedrooms, of which seven have ensuite bath or shower rooms
- All rooms have zip and link beds and can be set up either as super king-size or twin

Cooking and Dining

- Dining area seats 20 guests
- Table and chairs on terrace
- Fantastic chef available for a special meal or throughout the weekend
- Drop off meals available
- BBQ
- Great dining nearby

Children Welcome

- Books and DVDs for children
- Secure, gated courtyard
- Cots available

Where We Are

- The Postcode is BN18 0BG
- The nearest village is Arundel, a mile away
- The nearest train station is Arundel, a 4 minute drive
- The nearest airport is Gatwick
- Taxis available
- Ample parking

Things to Do Inside

- CD Player
- DVD Player
- TV with Freeview
- Wi-Fi
- Indoor heated swimming pool

Things to Do Outside

- Indoor heated swimming pool
- Extensive gardens to explore

Activities

- Horse riding
- Water sports
- Cycling
- Golf

Useful information

- Fishing
- Pampering and beauty treatments at the house

Top Things to Do for Children

- Arundel Castle
- Arundel Wetland Centre
- Southwater Country Park
- South Downs Light Railway
- Blue Flag Beaches

Payment Process

- We take a one third deposit at the time of booking
- The balance is due three months before the date booked

Cautionary Deposit

- £1000 refundable deposit

House Restrictions

- No pets please
- Not suitable for stag or hen parties

Arrival and Departure

- Check in 4pm
- Check out 4pm on a Sunday
- Check out 10am on other days

What's Included

- Linen
- Towels
- Please kindly note you will need to bring your own pool towels
- Essentials
- Utilities
- Under loor heating
- Wheelchair accessible

Guest Reviews

"A fantastic weekend away for a special family celebration (the big 40) - a real home from home! Notes taken on the colour scheme/interior decor! Beautiful location: perfect for walking, shopping, sightseeing, yet so quiet and comfortable with no hustle and bustle. We hope to return and would 100% recommend you, you really have a beautiful place here." – **Claire**

"We booked the whole property for my father's 65th birthday celebrations. There was ample room for all of us in both the bedrooms and the living areas. Everything was very clean, nicely decorated and well equipped with more than just "the basics" provided. The children loved running about in the courtyard and gardens and the swimming pool was great, though not much of a shallow end so bring armbands/floats for younger children. It was one of the best properties we have stayed in for such a group. Arundel was within walking distance and a very pleasant place to visit." – **June**

"Just to say a very big THANK YOU for our stay – it was exactly what we needed to recharge our frazzled batteries! Your home is beautiful, and the guest accommodation is nothing short of stunning. We will definitely be back, and I am already recommending you to our friends and family!" – **Christian**