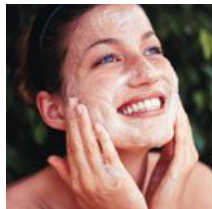
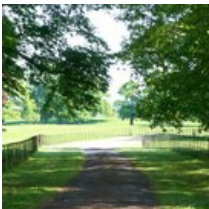


kate & tom's

Extraordinary holidays, celebrations & adventures



Enjoying your stay at River Wye House

Everything you need to get the most out of your stay

Contents

Arrival3
<i>Where We Are</i>	3
<i>Check in and check out</i>	3
Cooking & dining - chef services.5
Cooking & dining - great places to eat & drink6
Cooking & dining - Shopping for Food8
Things to do - activities and pampering9
Top things to do with children.	11
Useful information	12
Guest Reviews	14

Arrival

Where We Are

Property Name: River Wye House
Address: Wye Valley Lodge
Brockweir
County: Gwent
Postcode: NP16 7PE

Check in and check out

Check in time: 4pm

Check out time for 2 night weekend booking: 10am Sunday
Check out time for 3 night weekend booking: 10am Monday
Check out time for 7 night week bookings: 10am Friday

The best postcode to use with Satnav is: NP16 7PE

Nearest train station and distance: Chepstow, an 18 minute drive

Taxis available:

Route 1, Chepstow	01291 630 111
Abbey Taxis, Chepstow	01291 625 847
M & R Taxis Ltd, Chepstow	01291 624 482

The nearest airport is: Bristol, about an hour drive

Arrival

Getting To Us

The best postcode to use with satnav is: NPI6 7PE

Directions

From Cheltenham

Take A40, A48, B4226 and B4228 to Horsepool Ln in Saint Briavels

Drive to Underhill

Turn right onto Horsepool Ln

Continue onto Coldharbour Rd

Slight left toward Underhill

Turn right at Mill Hill

Take the 1st right onto Underhill

How to find the House

Once you have crossed the small bridge over the river Wye that leads directly to the hamlet of Brockweir; you will see on your right hand side the Brockweir Country Inn. Opposite this pub on the left hand side, is a turning called Underhill. Take this turning (narrow lane) and proceed until you arrive at a fork in the road. Take the right hand fork and continue up the hill for approximately half a mile. The entrance to the Lodge will be found on the left hand side where you will see clearly marked 'Brockweir Lodge' on the gate. Care should be taken when driving up the lane as it is also frequented by walkers, please keep speed to a very minimum.

Cooking & dining - chef services

You'll find our top recommendations below. If you do discover any other gems please do let us know and we will share them with other guests visiting the property.

Chef Services

Raspberry Catering

01633 869005

Offering every type of private dining whether a family celebration, intimate dinner, vintage afternoon tea or a lavish picnic, Raspberry Catering has a range of menus to suit all tastes. Specialising in locally sourced seasonal produce (organic whenever possible) and able to accommodate special dietary requirements, the chefs at Raspberry will be pleased to come and cater for your special day at River Wye House.

For more information please see their website: raspberrycatering.co.uk

Wye Valley Picnics

Why not take advantage of the beautiful surroundings and have a picnic prepared for you. For romantic picnics by the riverbank, or a family feast in our wooded glades or on the lawn, Wye Valley Picnics provide a speciality service that delivers delicious fare, prepared and set up in a perfect location.

Please see www.wyevalleypicnics.co.uk to find out more about the range of menus to choose from.

Suzannah Starkey

07780 996981

Whether it be informal suppers delivered to the door, traditional afternoon teas or celebratory dinners complete with flowers, Suzannah Starkey will be pleased to assist. An imaginative cook specialising in occasions and themes with an emphasis on locally sourced produce, Suzannah can be contacted by phone or at Suzannah.Starkey@gmail.com

Local produce that the area is renowned for

The Forest of Dean and Wye Valley is a primary producer of top quality food and drink. Everything from cider, wine, artisan beer and cheeses, Gloucester Old Spot bacon and smoked Severn salmon, to organic juices and vegetables, free range chickens and eggs.

It is distributed locally and nationally and awaits every visitor. Many of our food producers have onsite shops, and produce can be found at regular Farmers' Markets and other outlets throughout the area.

Cooking & dining - great places to eat & drink

Nearest pub

Brockweir Inn

Mill Hill, Brockweir, Chepstow, NP16 7NG (10 minute walk)

Just down the lane is this friendly local. Expect normal pub grub and a wide range of real ale. First Tuesday of every month is a folk night, which is always good fun.

Pubs

The George

High Street, St Briavels, GL15 6TA (10 minute drive)

Charismatic pub that's always full of locals and visitors alike. Food is, again, pubby and there's lots of drinks to choose from.

The Ostrich Inn

Newland, GL16 8NP (20 minute drive)

Immensely welcoming pub that's been around since the 13th century. Lots of real ales, beers and wines. Lots of board games to choose from. Be sure to take a walk around the picturesque village of Newland too.

The Fountain

Trelleck Grange, NP16 6QW (10 minute drive)

Just over the border into Wales is this peaceful pub with a mix of both Welsh and English ales and ciders. Small walled garden out-back that's lovely in the summer.

Cooking & dining - great places to eat & drink

Restaurants

The Crown at Whitebrook

Whitebrook, NP25 4TX (15 minute drive)

Tel: 01600 860254

If you fancy a splurge, then this Michelin star restaurant is worth a visit. It, unlike many of its other counterparts which have won the coveted rosette, is relaxed and friendly. Expect simple food cooked to perfection: Wild seabass with rainbow chard Blewitt mushrooms and foraged fennel, or Venison with walnut, brussel leaves, quince semi-dried grape. Make sure to book well in advance, as it is naturally a popular place to eat.

The Mill Race

Walford, Ross-on-Wye HR9 5QS (30 minute drive)

Tel: 01989 562891

This is village pub a cut above the rest. Run by passionate owners who also own a nearby farm that supplies all the seasonal produce, The Mill Race serves fresh, delicious food like Fillet of John Dory with Saffron Risotto, Cockle and Clam Veloute, Caper and Samphire. Again, we advise you to book in advance!

Cooking & Dining - Shopping for Food

Best local supermarket

The Village Shop

Mill Hill, Brockweir NP16 7NW (25 minute walk)

Tel: 01291 689995

Sells fresh bread, cheeses, milk, meat, vegetables and cakes. If you want, you can ring them up and they can do special orders for you too.

Butchers

A&H Jones

Coleford Road, Tutshill, Chepstow, NP16 7BN (16 minute drive)

Supermarkets

Tesco

Chepstow, Monmouthshire NP16 5PB (20 minute drive)

Things to do - activities and pampering

Our top recommendations for activities and pampering are below.

The Forest of Dean is activity central. Here you can raft, zipline, cycle, rock climb, and much more. Below are a few recommended outfits that operate in the area.

Clay pigeon shooting, air rifle and archery

DBC Lesiure

Trowgreen Farm, St. Briavels, Lydney, GL15 6QP (16 minute drive)

Tel: 01594 833940

Offers lessons to those learning, or guidance for those wanting to improve their skills. Teas and coffees are provided at their lodge. Big parties are welcome, and they can even come to you with all the relevant equipment.

Off-road driving

Whitecliff Off Road Driving Centre

Whitecliff Quarry, Coleford GL16 8NB (20 minute drive)

Tel: 01594 834666

This is a great day out. Land Rovers and Range Rovers, carefully maintained and tweaked for for some serious off-road terrain, await when you arrive. Beginner, intermediate and advanced lessons are available, which can take you through rocky quarries, muddy forests and steep slopes.

Cycling

There are many trails that criss-cross around the Forest, ranging from flat and easy family trails to extreme downhill mountain bike tracks - there really is something for everybody - and there are a number of cycle hire centres you can rent a good quality bike from.

Pedalbikeaway Cycle Centre

Cannop Valley, Coleford GL16 7EH (25 minute drive)

Tel: 01594 860065, www.pedalbikeaway.co.uk

Has a large fleet of well-maintained bikes, including some world-class mountain and downhill bikes. Leisure bikes and also adaptive bikes are available, including electric bikes, wheelchair bikes, tandems and trikes. Their website is also a great comprehensive guide to many trails found in the Forest.

Canoeing

Monmouth Canoe Hire & Activity Centre

Castle Yard, Old Dixton Road, Monmouth, Monmouthshire, NP25 3DP (20 minute drive)

Tel: 01600 716083, www.monmouthcanoe.co.uk

Here you can hire out Canadian canoes and travel down the River Wye, past River Wye House and into Chepstow. With such a calm and steady flow (providing it hasn't rained at a constant for the past week or so) a journey down the river Wye is a must - we think it's impossible to find a more beautiful river to paddle down.

Things to do - activities and pampering

Go Ape!

Mallards Pike Lake, Park End, Lydney, Gloucestershire GL15 4HD (25 minute drive)

www.goape.co.uk/days-out/forest-of-dean

Situated in a beautiful part of the Forest of Dean, Mallards Pike is abound with wildlife. Full of hire-wires, wobbly crossings and heart-stopping zip-lines, Go Ape! is adrenaline-fuelled day out that caters for families, corporate teams, children's parties and stag and hen parties. Booking can be done on the phone or on their website, and we advise you to do it sooner rather than later in the busy spring and summer months to avoid disappointment. Minimum age: 10; minimum height: 1.4m; maximum weight: 20.5 stones.

Forest Segway

Mallards Pike Lake, Park End, Lydney, Gloucestershire GL15 4HD (25 minute drive)

www.goape.co.uk/days-out/forest-of-dean

Go Ape! also offer you the chance to go for a segway adventure through the forest. Great fun!

Bushcraft and survival training

Wye Canoes

Ye Old Ferrie Inn, Symonds Yat West, Ross-on-Wye, Herefordshire HR9 6BL (25 minute drive)

Tel: 01600 890027 Mob: 07789 895082, www.wyecanoes.com

If you want to distract the kids (or yourselves!) from iPads, TVs and other gizmos, then what better way to do so by learning the ancient - yet immensely useful - art of bushcraft. Wye Canoes at Symonds Yat give lessons in fire starting, shelter building, foraging, water capture and food procurement and preparation. Wonderful day out in nature - you'll learn a lot!

Golf

Forest Hills Golf & Leisure Club

Mile End Rd, Coleford, Gloucestershire GL16 7QD (20 minute drive)

Tel: 01594 810620 www.foresthillsgolfandleisure.co.uk

At 6,387 yards long, this course is relatively challenging and follows the undulating natural landscape.

Pampering

For pampering in the comfort of your property, there is a range of treatments available from a local therapist including massage, pedicure, manicure, etc. Please book well in advance.

Please enquire via My Personal Sanctuary (www.mypersonalsanctuary.co.uk) via telephone number 01625 540 557 or email enquiries@mypersonalsanctuary.co.uk.

Top things to do with children

Our top recommendations for outings with children are below.

Forest of Dean Sculpture Trail

Speech House Road, Coleford GL16 7EL (25 minute drive)

www.forestofdean-sculpture.org.uk

A lovely day can be spent wandering around the forest in search of all sorts of art.

Puzzle wood

Perrygrove Road, Coleford, GL16 8QB

Tel: 01594 833187

Clearwell Caves

Useful information

River Wye House at a glance

Bedrooms and Bathrooms

- Sleeps up to 16 guests
- Six bedrooms
- Four double bedrooms, one of which is ensuite
- One single bedrooms with bunk beds
- One king sized bedroom with a single bed
- Two shared family bathrooms
- Downstairs WC

Cooking and Dining

- Dining table seats 12 comfortably
- Fantastic chef available for a special meal or throughout the weekend
- Picnics by the river bank
- Double electric oven and hob
- Large fridge-freezer
- Dishwasher, slow cooker and microwave
- BBQ and chiminea
- Good dining nearby
- Online deliveries

Children Welcome

- Highchair available
- Travel cot available
- Games

Where We Are

- The postcode is NP16 7PE
- The nearest town is Brockweir, half a mile from the house
- The nearest station is Chepstow
- The nearest airport is Bristol
- Taxis available
- Plenty of parking

Things to Do Inside

- Large TV
- DVD player and DVDs
- CD player and radio
- iPod dock
- Wi-fi
- Library
- Books and games

Useful information

Things to Do Outside

- Seven acres of gardens and grounds
- Friendly sheep and ponies
- All weather tennis court
- Barbecue and Chiminea
- Terrace with garden furniture
- Sun loungers
- Orchard

Activities

- Horse riding
- Canoeing
- Fishing
- Cycling
- Pampering and beauty treatments at the house

Top Things to Do for Children

- Clearwell Caves
- Perrygrove Railway and Treetop Adventure
- Puzzlewood

About your Booking

Payment process

- We take a one third deposit at the time of booking
- The balance is due three months before the date booked

Cautionary deposit

- £500 refundable deposit

House restrictions

- Up to two well-behaved dogs are welcome
- Noise policy in place
- Not suitable for hen or stag parties

Arrival and Departure

- Check in 4 pm
- Check out 10 am

What's included

- Linen
- Towels
- Essentials
- Utilities
- Supply of logs
- Gas for BBQ and firelighters for log burner

Guest Reviews

"The Wye Valley is a slice of heaven sandwiched between England and Wales" – *The Guardian*

"I just wanted to drop you a quick email to say thank you so much for helping us to organise and book the cottage over the weekend - it was amazing! We all loved every minute. it is absolutely gorgeous and it's in such a fabulous location. The tennis court was brilliant fun and the ponies gorgeous to say hello to in the morning with a cup of tea!" – **Sam**