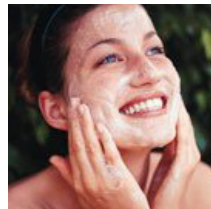


**kate & tom's**

*Extraordinary holidays, celebrations & adventures*



## Enjoying your stay at The Beach House

*Everything you need to get the most out of your stay*

# Contents

---

Arrival . . . . .	.3
<i>Where We Are</i> . . . . .	3
<i>Check in and check out</i> . . . . .	3
Getting to us . . . . .	.4
Cooking & dining - chef services. . . . .	.5
Cooking & dining - great places to eat & drink . . . . .	.6
Cooking & dining - shopping for food . . . . .	.8
Things to do - activities and pampering . . . . .	.9
Top things to do with children . . . . .	11
Top places to visit & shop nearby . . . . .	12
Useful information . . . . .	13

# Arrival

---

## Where We Are

Property Name: The Beach House  
Address: The Beach House  
Beach Road  
Burton Bradstock  
County: Bridport  
Postcode: DT6 4RF

## Check in and check out

Check in time: 4pm  
Contact name for check in: Jenny  
Contact number for check in: 07525 163 514

Nearest Train station and distance: Bridport, three and a half miles from the house

The nearest airport is: Exeter

Check out time for 2 night weekend bookings: 4pm Sunday  
Check out time for 3 night weekend bookings: 10am Monday  
Check out time for 7 night week bookings: 10am Friday

# Getting to us

---

The best postcode to use with Satnav is: DT6 4RF

## **Directions:**

Follow M5 to Taunton. Take exit 25 from M5

At junction 25, take the A358 exit to Taunton/Honiton/Yeovil/Weymouth

Take A358 and A35 to Beach Rd in Burton Bradstock

At the roundabout, take the 1st exit onto A358

At the roundabout, take the 4th exit and stay on A358

Go through 1 roundabout

Turn left onto Church St/A358

Continue to follow A358

At the roundabout, take the 1st exit onto Stony Ln/B3261

Turn left onto Lyme Rd/B3261

Continue to follow B3261

Turn left onto A35

Go through 1 roundabout

At the roundabout, take the 3rd exit onto Burton Rd/B3157

Continue to follow B3157

Turn right onto Beach Rd

Destination will be on the right

# Cooking & dining - chef services

---

## **Chef Services**

### **Gideon Hitchin Catering**

07961 443 189

Working professionally since 1996, he has already catered for many functions and major events, and has achieved head chef status in different restaurants. Using the best West Country produce - meats, fish, teas and coffees - they offer excellent catering for many types of events.

[www.gideon-hitchin-catering.co.uk/caterer-dorset-devon-somerset-contact/](http://www.gideon-hitchin-catering.co.uk/caterer-dorset-devon-somerset-contact/)

### **The Dorset Catering Company, 30 Lake Ln, Bridport DT6 4JY**

01308 487883

# Cooking & dining - great places to eat & drink

---

## Nearest pub

### The Three Horseshoes

01308 897 259

[www.3hsbb.co.uk/](http://www.3hsbb.co.uk/)

## Pubs

### The West Bay Hotel, Station Rd, West Bay, Dorset DT6 4EW

01308 422 157

Fine dining specialising in fish and seafood

[www.thewestbayhotel.co.uk/](http://www.thewestbayhotel.co.uk/)

### Haddon House Hotel, West Bay, Bridport, Dorset DT6 4EL

01308 423 626

[www.hotelsbridport.co.uk/](http://www.hotelsbridport.co.uk/)

### The Marquis of Lorne, DT6 3SY

[www.themarquisoflorne.co.uk/](http://www.themarquisoflorne.co.uk/)

### The Anchor

01308 897 228

[www.anchorinnburtonbradstock.co.uk/](http://www.anchorinnburtonbradstock.co.uk/)

## Restaurants

### Hix Oyster & Fish House

01297 446 910

[www.hixoysterandfishhouse.co.uk/](http://www.hixoysterandfishhouse.co.uk/)

### Hive Beach Café, Beach Rd, Burton Bradstock, Bridport, Dorset DT6 4RF

01308 897 070

Relaxed seafood dining by the sea

[www.hivebeachcafe.co.uk/](http://www.hivebeachcafe.co.uk/)

# Cooking & dining - great places to eat & drink

---

## **Best places to eat out with children**

Jurassic Fun Centre, Freshwater Beach Holiday Park, Burton Bradstock, Dorset DT6 4PT

01308 897317

[www.jurassicfuncentre.co.uk/](http://www.jurassicfuncentre.co.uk/)

## **Best Takeaways**

Bridport Gourmet Pies, Gore Cross Business Park Corbin Way, Bridport, Dorset DT6 3UX

01308 420244

[www.dorset-pies.co.uk/](http://www.dorset-pies.co.uk/)

# Cooking & dining - shopping for food

---

## **Best local supermarket:**

Waitrose, 42/44 West St, Bridport DT6 3QP  
01308 422 252

Naturalife Wholefoods, 22 South St, Bridport, Dorset DT6 3NQ  
01308 459 690  
[www.livingfood.co.uk](http://www.livingfood.co.uk)

Harbour Stores Grocery, Bridport Arms Hotel, West Bay, Bridport DT6 4EN  
01308 427 676

## **Bakery & Food Store:**

Town Mill Bakery  
[www.townmillbakery.com](http://www.townmillbakery.com)

Forbidden Fruits, 43 South St, Bridport DT6 3NY  
01308 422 794

## **Wine Merchant:**

Wessex Wines, St Michael's Ln, Bridport DT6 3RR  
01308 427177

## **Major supermarket online orders:**

Waitrose  
[www.waitrose.com](http://www.waitrose.com)



# Things to do - activities and pampering

---

Our top recommendations for activities and pampering are below.

## **Clay Pigeon Shooting**

The Big Shoot, I Wardon Hill, Evershot, Dorset DT2 9PW

0844 745 5008

[www.thebigshoot.co.uk/en/venue/oVenue-3734\\_oVenAct-5](http://www.thebigshoot.co.uk/en/venue/oVenue-3734_oVenAct-5)

## **Horse riding**

Hillview Riding Stables, Sunnyside Farm, Cathole Bridge Road, Crewkerne, Somerset TA18 8PA

01460 72731

[www.hillview-riding-stables.net/](http://www.hillview-riding-stables.net/)

## **Watersports**

West Bay River Boat Hire, West Bay, Dorset DT6 4EZ

07905 689994

**Scimitar Diving, Portland**

07765 326728

Whether you've been diving before or looking to have a go, this diving team welcome all levels

[www.scimitardiving.co.uk/](http://www.scimitardiving.co.uk/)

**Sidmouth Sailing Club, The Port Royal, The Esplanade, Sidmouth EX10 8BG**

[www.sidmouthsailing.org.uk/](http://www.sidmouthsailing.org.uk/)

## **Kayaking**

Weymouth Watersports, Portland rd, Weymouth DT4 9JZ

07743 346468

Surf skis and kayak hire

[www.puravidaweymouthwatersports.co.uk/](http://www.puravidaweymouthwatersports.co.uk/)

# Things to do - activities and pampering

---

## **Fishing**

Learn2Fish Fishing Tuition, 21 Kingsway, Lyme Regis, Dorset DT7 3DU  
07506 729 891

Harry May Fishing Trips, The Cobb, Lyme Regis, Dorset DT7 3JJ  
07974 753287  
[www.mackerelfishinglymeregis.com/](http://www.mackerelfishinglymeregis.com/)

## **Golf**

Bridport & West Dorset Golf Club, Burton Rd, Bridport, Dorset DT6 4PS  
01308 421491  
[www.bridportgolfclub.co.uk/](http://www.bridportgolfclub.co.uk/)

## **Pampering**

My Personal Sanctuary  
[www.mypersonalsanctuary.co.uk](http://www.mypersonalsanctuary.co.uk)

# Top things to do with children

---

Our top recommendations for outings with children are below.

## **The Jurassic Fun Centre, Dorset, DT6 4PT**

01308 897317

Jurassic Fun Centre. For a ROARING good time whatever the weather. Pools, slides, restaurants, bowling, gym, and much more

[www.jurassicfuncentre.co.uk/](http://www.jurassicfuncentre.co.uk/)

## **Abbotsbury Swannery**

This is the only place in the world where you are able to walk through the heart of a colony of nesting Mute Swans. A visit to the Swannery is considered one of the best things to do in Dorset.

[www.abbotsbury-tourism.co.uk/swannery/](http://www.abbotsbury-tourism.co.uk/swannery/)

## **Abbotsbury Subtropical Gardens**

Magnificent 30 acre garden filled with rare and exotic plants from all over the world.

[www.abbotsbury-tourism.co.uk/gardens/](http://www.abbotsbury-tourism.co.uk/gardens/)

## **Abbotsbury Children's Farm**

Children can cuddle the guinea pigs, ride the ponies, race the tractors, play in the large undercover play area, jump around on the bouncy castle (don't forget your socks!) and bottle feed the lambs. The lambs also have a midday race around a track, after the race the children are invited to take a lamb for a warm down walk on a lead.

[www.abbotsbury-tourism.co.uk/childrens\\_farm/](http://www.abbotsbury-tourism.co.uk/childrens_farm/)

# Top places to visit & shop nearby

---

## Golden Cap

The great rocky shoulder of Golden Cap offers magnificent views at every compass point. On a clear day you can see across Lyme Bay to Dartmoor - well worth the effort of the walk uphill.

Stone barrow Hill is a great starting point for 25 miles of footpaths around the Golden Cap estate. An old radar station houses a National Trust information point, shop, toilets and a basecamp.

Descend a steep flight of steps and discover St Gabriel's Beach. This stretch of secluded shingle has become a hunting ground for Jurassic Coast fossils and traces almost 185 million years of the Earth's history.

An all-ability circular trail takes you through the woodlands of Langdon Hill Wood. Rich in wildlife, they are home to large numbers of 'blue' butterfly in summer and many different fungi in autumn.

Finally, high on the cliffs you'll find the ancient Thorncombe beacon. It was one of a series dotted along the English coast as part of an early warning system guarding against foreign invasion.

## Lyme Regis

Lyme Regis boasts breathtaking scenery and a special mystique, making it a sparkling resort for all seasons. Its historic Cobb and harbour are iconic features, set against moody blue cliffs yielding fossilised evidence of life on earth millions of years ago.

[www.lymeregis.org/](http://www.lymeregis.org/)

## Chesil Beach

A pebble beach 18 miles long and stretches north-west from Portland to West Bay.

[www.chesilbeach.org/](http://www.chesilbeach.org/)

## Hive Beach

The Beach House literally sits on the Hive Beach at Burton Bradstock.

With stunning views across Lyme Bay and the beach as your back garden, the house is a unique way to enjoy a beautiful stretch of the Jurassic coastline.

# Useful information

---

## **The Beach House at a glance:**

### **Bedrooms and Bathrooms**

- Sleeps 6 guests, with room for a few more
- Three bedrooms
- One double room
- One twin room with extra children's 'truckie' bed
- Attic room with double bed, futon and two 'sleeping pods'
- One shared bathroom

### **Cooking and Dining**

- Fully fitted kitchen
- Breakfast bar
- Drop-off meals available
- Good dining nearby
- Online deliveries

### **Where We Are**

- The postcode is DT6 4RF
- On Chesil Beach, near Burton Bradstock
- The nearest town is Bridport, three and a half miles from the house
- The nearest station is Maiden Newton, twenty seven minutes' drive away
- The nearest airport is Exeter
- Taxis available

### **Things to Do Inside**

- Large TV
- Satellite package
- Wi-fi
- Binoculars for spotting early fishermen

### **Things to Do Outside**

- Chesil Beach is right on the doorstep
- Loungers on the terrace
- Hot Tub
- Small courtyard garden

### **Activities**

- Sailing
- Golf
- Fishing
- Diving
- Pampering and beauty treatments at the house

# Useful information

---

## **Top Things to Do for Children**

- The Jurassic Fun Centre
- Abbotsbury Swannery
- Abbotsbury Children's Farm

## **Payment process**

- We take a one third deposit at the time of booking
- The balance is due three months prior to your stay

## **Cautionary deposit**

- £500 refundable deposit

## **House restrictions**

- Noise policy in place
- Dogs may be allowed with an extra £500 cautionary deposit

## **Arrival and Departure**

- Check in 4pm
- Check out 10am

## **What's included**

- Linen
- Towels
- Handwash and shower gel
- Essentials
- Utilities