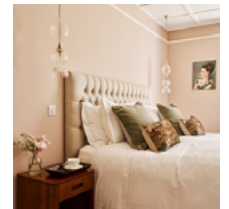


kate & tom's

Extraordinary holidays, celebrations & adventures



Enjoying your stay at The Hollies

Everything you need to get the most out of your stay

Contents

Arrival3
<i>Where we are</i>3
<i>Check in and check out</i>3
Getting to us4
Cooking & dining.5
<i>Chef services</i>5
<i>Great places to eat & drink</i>6
<i>Shopping for food</i>9
Things to do	12
Things to do with the children.	15
Useful information	16
Guest reviews	18

Arrival

Where we are

Property name: Woollams
Address: Botley Road
Curdrige
Southampton
Hampshire
SO32 2DQ

Check in and check out

Check in time: 2pm
Check out time on Sundays: 4pm
Check out time on other days: 12pm

Getting to us

The best postcode to use for satnavs is:	SO32 2DQ
Stations:	Botley 3 min (0.8 mi) via Botley Rd/B3035
Airports:	Southampton 16 min (8.5 mi) via M27
Taxis:	Hedge End: 01489 696969 The Bitterne Cab Company: 023 8044 8888

Directions

From London

- Take the M3 motorway, coming off at junction 11 at Winchester turning left on to the B3335 and following the signs for Twyford and Marwell Zoo.
- Go through Twyford and turn left on to the B2177 at Fisher's Pond. Stay on this road and follow signs for Bishop's Waltham.
- Driving through Bishop's Waltham, you'll come to the Crown Pub on your left and you need to take the third exit at the roundabout here following signs for Botley.
- You'll be on the B3035 now for two miles. Look out for the wooden fence facing the road on the right - we're about a quarter of a mile past the Curdridge sign and shortly after the Cricketers pub sign.
- We're opposite Chapel Lane and before St Peter's Church.

From Bristol

- Follow M4 to A338 in West Berkshire. Take exit 14 from M4 (48 min (52.7 mi))
- Take B4000, A34 and Morestead Rd to Botley Rd/B3035 in Curdridge
- Coming through Curdridge on Botley Rd and passing the church on the left, The Hollies is on the left just beyond Chapel Lane.

From Manchester

- Follow A5103 to M56 in Wythenshawe (19 min (6.7 mi))
- Take M6, M6 Toll, M42 and M40 to A34 in Oxfordshire. Take exit 9 from M40 (2 h 16 min (142 mi))
- Continue on A34. Drive to Botley Rd/B3035 in Curdridge
- Coming through Curdridge on Botley Rd and passing the church on the left, The Hollies is on the left just beyond Chapel Lane.

Cooking & dining - chef services

You'll find our top recommendations below. If you discover any other gems, please do let us know and we will share them with other guests visiting the property.

Catering

Smallpiece Catering

01489 877931

www.smallpiececatering.co.uk

Celebrating lives past or brand new, big birthdays, big achievements or enjoying those life moments when we can say thank you, Smallpiece Catering can cater for any kind of party. From cocktail style canapés to easy-going Hog Roasts, high teas to buffets. Smallpiece Catering can create a party perfect menu for you.

La Belle Assiette

020 3318 5003

www.labelleassiette.co.uk/jay-geddes

An experimenter with a rustic style. Having cooked for the likes of Rihanna, Beyonce, the England national football team and the royal family, to name a few, Jay Geddes has earned the expected reputation. Jay loves to shop for his produce at local farmers' markets and is a firm believer in the Slow Food Revolution. He can be hired for one night, one week or longer depending on availability.

Dineindulge

015394 34943

info@nickskitchen.co.uk

www.nickfostercatering.co.uk

Dineindulge offer affordable restaurant-quality cuisine brought directly to you. With a range of set menus, their aim is to make the whole process as quick and easy as possible so that you can sit back, relax and enjoy.

Renowned local produce

Hampshire offers a wide range of locally produced food and drink and it's no surprise that the region is home to many award-winning restaurants, hotels and pubs. There is a wealth of renowned produce to be found – from real ciders, ales and wines to chutneys, jams and cheeses; from the famous watercress to chocolate, trout and other free and organic meats. Indulge!

Cooking & dining - great places to eat & drink

Hampshire has some of the best restaurants and pubs in the country. There are many excellent dining places nearby so we have listed a small selection below that we think you'll enjoy. Booking in advance is strongly recommended.

The Local Village

We really recommend you visit Bishop's Waltham. It's a quintessentially English market town with an excellent range of shops and places to eat and drink. From the impressive ruins of the Bishop of Winchester's Palace visited by royals from Richard the Lionheart to Elizabeth I, to the remarkably well preserved Medieval high street, the town is steeped in history. There are two Co-ops and a really good Budgens along with a fantastic butcher, fishmonger and greengrocer in Bishop's Waltham. However, if you need to do a larger shop, there's a large Sainsbury's and M&S just a couple of miles away at Hedge End. Most of the larger supermarkets deliver to the house so you can order online in advance of your stay.

The Crown Inn

The Square, Bishop's Waltham, Southampton, Hampshire, SO32 1AF (5 minute drive)
01489 893 350

The Crown Inn is a great local pub, all low beams and cosy nooks, with a really good menu. Located in the Heart of Bishops Waltham, The crown is ideal for a good homecooked meal or a simple drink with your friends. Ample parking and offering the chance to see lovely Bishop's Waltham while there.

Josie's

6-8 High Street, Bishops Waltham, Hampshire (5 minute drive)
01489 899075

Opened in 2011, Josie's offers a warm and welcoming atmosphere where you can find a wide range of exclusive wines, Monmouth speciality coffee, loose leaf teas and delicious freshly made food along with a warm and welcoming atmosphere featuring skilled and friendly staff. Josie's is fantastic for posh sandwiches with an all day breakfast with the best Eggs Benedict ever, but always busy so you may need to wait for a table.

Barrington's Deli

60 High Street, Bishops Waltham, Hampshire, SO32 1AB (5 minute drive)
01489 896600

Enjoy delicious home-cooked food in a relaxed and welcoming atmosphere at Barringtons. A range of speciality sandwiches and salads, freshly baked quiches, cakes and homemade soups are created to satisfy while the deli counter will inspire you with its selection of local and international fine foods. Food available to eat in or take away.

FRIENDS Refined Indian Cuisine

Bank Street, Bishops Waltham, Hampshire, SO32 1AN (5 minute drive)
01489 891791

Chef Helon Miah has a wide range of experience working for some of the leading restaurants in Hampshire. He has created a fusion of the traditional centuries-old Indian cuisine with a modern twist. Take away is also available.

Cooking & dining - great places to eat & drink

The Cricketers Inn

The Cricketers Inn, Curdridge Lane, Curdridge, SO32 2BH (15 minute walk / 5 minute drive)
01489 784420

The local village pub with consistently good food. Set in the heart of the beautiful Meon Valley, this serene setting, with a lovely spacious garden, is sure to provide the perfect spot for an al fresco lunch or cosy evening meal beside the log fire. Chef's freshly prepared menu is served daily for both lunch and dinner, along with an innovative selection of wines, ales and lagers. Also dog friendly.

Three Choirs Vineyards

Botley Rd, Southampton, SO32 2HL (15 minute walk / 5 minute drive)
01329 834700

What partners with great English wine? ...Great English cooking. Three Choirs Hampshire boasts a rich variety of the best of British cuisine in a great vineyard setting. Come for the wine tasting and walk amongst the vines and nature reserve. Then settle into a chair in the restaurant and dine on a fresh seasonal dish or two.

Regginas Italian

15 High St, Botley, Southampton SO30 2EA (25 minute walk / 5 minute drive)
01489 782068

Regginas Italian serves the best and freshest seasonal produce, Italian cheeses, meat and seafood. Get swept away by the warm, aromatic flavours of Italy, served to you with an elegant touch in an atmosphere that's second to none. Select from main menu, set menu or buffet menu and enjoy immaculate presentation, service and something a little different.

The Local Area

For those old enough to remember Howard's Way – high drama from the 80's – it was largely filmed in Hamble and these two pubs were featured but are actually both great pubs in their own right in lovely spots with good menus, and The Jolly Sailor made it into the Telegraph's best pubs in Britain book quite rightly.

The Hamble river is spectacular and has a huge marina. The harbour wall is a popular spot for crabbing and there is a little ferry boat which can take you (and your dog) to Warsash on the other side of the river, which is ideal for a gentle walk with lovely views.

The Bugle

High St, Hamble le Rice, SO31 4HA (20 minute drive)
02380 453000

This traditional village pub serves a fantastic selection of British classics to AA Rosette standard, using a large selection of ingredients sourced from the New Forest and Hampshire. The Bugle's special board has become infamous for its selection of fish dishes. Lymington day boat fish being a popular choice when in season.

Cooking & dining - great places to eat & drink

The Jolly Sailor

Lands End Rd Bursledon, SO31 8DN (15 minute drive)

02380 405 557

Situated right on the water, overlooking the Hamble Estuary with its flotillas of yachts, and accessible by boat from Swanwick Marina opposite, The Jolly Sailor has been a pub since at least the 19th Century. With beautiful views, warm interiors, and ample parking (with Bursledon Station just 1 minutes' walk away) and convenient for Southampton, Portsmouth and the M27, the Jolly Sailor is well worth the visit. Well behaved dogs on leads are also most welcome at any time, inside and outside. There is fresh water available and bowls. A charity dog menu is also available with a wide range of chews and foods. All proceeds go to the nominated charity, Together for Short Lives.

Winchester

Winchester is a real must on your local list of places to visit. The cathedral is remarkable and the whole city feels like you're walking around a Harry Potter set. Parking is plentiful in the evening but busier during the day and weekends and very busy at Christmas when the market's on. Botley's just over a mile away but bring a torch as it's incredibly dark along Botley Rd at night or in winter (which all adds to the fun!). The trains are very regular and it's only 20 minutes to Winchester and you should have no trouble getting a taxi back to the house.

River Cottage Canteen

Abbey Mill, Abbey Mill Gardens, The Broadway, Winchester, SO23 9GH (24 minute drive)

01962 457747

The River Cottage Canteen is a newly opened restaurant in Winchester and is great for lunch - good fun and relaxed. Delicious dining in a beautiful setting close to the city centre and main tourist attractions. Offering a menu of freshly prepared seasonal, local, organic and wild food, on an ever evolving menu, inside the stunningly converted grade II listed Abbey Mill.

Chesil Rectory

1 Chesil Street, Winchester, Hampshire, SO23 0HU (23 minute drive)

01962 851 555

This is an amazing building dating back to 1425 and the oldest commercial property in Winchester. Perfect for a special dinner and was voted the '3rd most romantic restaurant in Britain' by The Times newspaper.

The Old Vine

8 Great Minster Street, Winchester, Hampshire SO23 9HA (25 minute drive)

01962 854616

The Old Vine is a regular haunt for us. It's consistently good food, and great value in a fantastic position on the cathedral green.

The Black Rat

88 Chesil Street, Winchester, Hampshire SO23 0HX (22 minute drive)

01962 844465

The Black Rat group is legendary in Winchester. The restaurant has a Michelin Star, so a great choice for any 'foodies' in your party and if you want to treat yourselves. Also in the group and just across the road, is the fabulous Black Boy Pub with its very own Gin Bar, and The Black Bottle which serves a huge selection of

Cooking & dining - shopping for food

amazing wines.

Takeaways

Canton House

2 High St, Botley, CA12 5AS (3 minute drive / 29 minute walk)
01489 783920 (Home delivery available)

King Fisher

4 Coronation Parade, Hamble, Southampton, SO31 4JT (23 minute drive)
023 8045 6711

Lowford Balti

Portsmouth Rd, Bursledon, Southampton, SO31 8EP (15 minute drive)
023 8040 5836

Supermarkets

Budgens

1 Upper Northam Road, Hedge End, Southampton, SO30 4DY (9 minute drive)

Sainsbury's

Tollbar Way, Hedge End, Southampton, SO30 2UH (10 minute drive)

Tesco Extra

Hamble Ln, Bursledon, Southampton, SO31 8GN (17 minute drive)

Asda

49-57 High St, West End, Southampton, SO30 3DQ (14 minute drive)

Marks & Spencer

Tollbar Way, Hedge End, Southampton, SO30 2UH (11 minute drive)

Convenience stores

One Stop

Portsmouth Rd, Southampton, SO31 8EQ (16 minute drive)

Horton Heath Service Station

Botley Rd, Horton Heath, Eastleigh, SO50 7DN (8 minute drive)
Delicatessens

Delicious

48B High St, West End, Southampton, SO30 3DR (13 minute drive)

Cooking & dining - shopping for food

Cork & Cheese Co.

44 Bridge Rd, Park Gate, Southampton, SO31 7GF (15 minute drive)

Butchers

Grover Butchers

High St, Bishop's Waltham, Southampton, SO32 1AA (5 minute drive)

Fishmongers

Peter Atkinson's Anyfish

2 Merlin Mews, Houchin Street, Bishops Waltham, Southampton, SO32 1AR (7 minute drive)

Greengrocers

Hylands

High Street, Bishops Waltham, Southampton, SO32 1AA (5 minute drive)

Bakers

Bakers Dozen

79 High St, Botley, Southampton, SO30 2ES (5 minute drive)

Stainers Bakery

High Street, Bishop's Waltham SO32 1AA (5 minute drive)

Cooking & dining - shopping for food

Wine merchants

Alexander Hadleigh Wine Merchants Ltd.

19 Centre Way, Locksheath Retail Centre, Southampton, SO31 6DX (15 minute drive)

Just In Case

Bank St, Bishop's Waltham, SO32 1AN (6 minute drive)

Majestic Wine

Mountbatten Retail Park, Western Esplanade, Southampton, SO15 1QJ (31 minute drive)

Major supermarket online orders

For home delivery, Sainsbury's and Asda provide an online service.

www.sainsburys.co.uk

www.asda.com

Things to do

Our top recommendations for cultural days out can be found below.

Local cultural pursuits

Winchester

An unspoilt Cathedral city on the edge of the South Downs, Winchester is England's ancient capital and former seat of King Alfred the Great. Winchester is most well known for its stunning 11th-Century Cathedral and the Great Hall which for over 700 years has housed the mysterious Round Table. Winchester has a great range of shops and restaurants and we would highly recommend it for a day or an evening out. For eating out, The Vine and The Chesil Rectory are opposite the Cathedral and are both in beautiful historic buildings. If you would prefer not to drive, trains run regularly from Botley. www.visitwinchester.co.uk/great-hall

Chawton

Branching out to Chawton will reward you with a tour of Jane Austen's (preserved) house, the house in which she spent the last eight years of her life. Now a house museum, visitors can get a real sense of what it would have been like to live in Austen's time. www.jane-austens-house-museum.org.uk

Portsmouth

Portsmouth has all the potential for an amazing cultural day out, with magnificent theatres, live music venues, contemporary art galleries, two cathedrals, a rich literary heritage, galleries, events and festivals throughout the year. The Spinnaker Tower and the Royal Artillery Museum will be of especial interest but there's so much more to do. Get to the Gunwharf Quay for a spot of lunch between museums and ships. The New Forest is wonderful and the car museum in Beaulieu a fabulous place for any motor enthusiast.

Wickham

Nestling in the heart of the picturesque Meon Valley countryside, just a stone's throw from Winchester, the beautiful medieval village of Wickham is worthy of a day's exploration. A pretty village with the second oldest square in England. Chesapeake Mill is a fabulous place to visit and a treasure trove for antiques and collectables.

Hayling Island

Visit Hayling Island for the beach. Dog friendly and right at the end of Sea Front, it offers a lovely wide sandy beach with clean and clear water. Check out the Inn on the Beach for some delicious food. Another dog-friendly beach is Lee on Solent, which is more of a shingle beach but has lovely views of the Isle of Wight. Netley Abbey / Royal Victoria Country Park is great for walking with both woods and a beach. It's a very atmospheric park and was the site for a Victorian military hospital where the Chapel still stands. There's some great local walking books in the den and we particularly recommend the Family Pub Walks for shorter circular country walks. Also Manor Farm and Country Park has lovely local walks next to the Hamble. Of course, there are plenty of water sports and sailing on the Hamble too. Port Solent near Portsmouth is around a 20-minute drive and has a decent cinema as well as plenty of restaurants, bars and cafes all overlooking a pretty marina.

Things to do

Horse riding

The New Forest,

Burley-Villa School of Riding, Bashley Common Road, New Milton, BH25 5SH (44 minute drive)
01425 610278

Horse riding in the New Forest is one of the best ways to experience the natural beauty of the National Park and is truly the perfect backdrop for a relaxing ride. Whether you are an experienced rider or a beginner, the New Forest can cater for your experience levels and ensure you have a great day's riding.

Fishing

Lower Itchen Fishery

Gaters Mill, Mansbridge Rd, West End, Southampton, SO18 3HW (18 minute drive)

Chiphall Lake

Northfield Farm Lane, Fareham, PO17 5AZ (11 minute drive)

Golf

Hedge End Golf Centre

Upper Northam Rd, Southampton, SO30 4EA (9 minute drive)

Hedge End Golf Centre is a great facility for golf and fitness located on the outskirts of Southampton. With state-of-the-art facilities, their driving range offers 50 covered and heated bays, including 25 with automated teeing system. Their contoured practice range offers a great variety of targets and greens with bunkers, all illuminated by flood lights in the evenings.

Skylark Golf & Country Club

Skylark Meadows, Whiteley, Hampshire, PO15 6RS (18 minute drive)

Skylark welcomes visitors, guests and members to an 18-hole golf course. The club also boasts a spa and lovely restaurant, as well as a host of live events. Skylark is the epitome of a quintessential country club.

Breweries & Distilleries

CrackleRock Brewing Company

The Old Cooperage, The High Street, Botley, SO30 2EA (4 minute drive / 26 minute walk)

The Old Cooperage in Botley brews fine quality ales and Botley beer, now under the name of CrackleRock Brewing Company. The brewery is located just off Botley high street, so on a hot day or when the shops get too busy, go along for a drink and some education at the CrackleRock Brewery at the Old Cooperage.

Botley Brewery Ltd.

Botley Flour Mills, Mill Hill, Botley, SO30 2GB (3 minute drive / 24 minute walk)

This is a small brewery run by four partners, two of which can be found at the brewery most days. They have only been running the Brewery for 6 months, but their ales can be found on a regular basis at The Booze Shack in Shirley, Southampton and locally at the Botleigh Grange Hotel.

Things to do

Photography

Catherine Skinner Photography

01962 620205 / 07765 245291, www.catherineskinner.com

With a Top Ten placing for Photographer of the Year 2014 in children & family portraits, Catherine is one of Hampshire's leading portrait photographers. Her award-winning on-location portraiture work is set amongst some of Hampshire's most beautiful locations.

Dampering

Macdonald Botley Park Hotel & Spa

Winchester Rd, Bottley, SO32 2UA (6 minute drive / 40 minute walk)

0344 879 9034, www.macdonaldhotels.co.uk

Revitalise, rejuvenate and relax. They do their utmost to maximise the enjoyment of your stay, with access to an array of luxurious spa treatments for a whole host of occasions.

Organic Treatment Company

0203 551 3935, info@organicreatmentcompany.co.uk

Be it a birthday party, baby shower, hen party or just a girlie get-together, Hampshire Beauty is ready to pamper you morning, day or night. They boast an exclusive team of beauticians, skin care specialists and masseuses, delivering a full range of treatments.

Cycling & cycle hire

Cycling in the New Forest is ideal for families wanting safe off-road and gentle cycle routes, where you will experience the open heathland and sheltered woods. Along the way you will see many animals including the famous New Forest ponies and an abundance of wildlife. The off-road cycle network is easily accessible by rail or road so you can bring your own bikes or hire bikes when you arrive.

Beaulieu Village Bike Hire

The Old Forge, Beaulieu, SO42 7YA (38 minute drive)

01590 612377, info@newforestactivities.co.uk, www.thenewforest.co.uk

Hot air ballooning

Adventure Balloons

Winchfield Park, London Road, Hartley Wintney, Hampshire, RG27 8HY (49 minute drive)

01252 844222, www.adventureballoons.co.uk

In South Hampshire you can fly from Anstey Park in Alton, from West Meon, from Micheldever near the railway station and from the City of Winchester. Depending on which site you take off from and the wind direction on the day, during the balloon ride you may see Winchester Cathedral, the rolling Hampshire countryside, the River Test or small villages such as Laverstoke, Whitchurch, and the Candovers.

Things to do with the children

There are many great places to go with the children in Hampshire and we've listed our top recommendations below. There's lots to see at many of these places, so be prepared for a long day out!

Go Ape!

Country Park, Allington Lane, West End, Hampshire, SO30 3HQ (14 minute drive)

0333 331 7928, questions@goape.co.uk, www.goape.co.uk

Go Ape! is perfect for a family day out in Hampshire. Their Tree Top Adventure involves fun and adventure across five sites. Each site features award-winning high ropes, awesome crossings, tunnels, bridges and a fantastic zip wire to finish. Go along for breathtaking scenery, treetop high ropes, crossings and much more.

Marwell Zoo

Winchester, SO21 1JH (12 minute drive)

01962 777407, marwell@marwell.org.uk, www.marwell.org.uk

With friendly staff and endless opportunities of interest for the kids, this has to be one of the highlights to your stay in Hampshire. The Park offers a number of useful activities and facilities, including adventure playgrounds, a railway and more. Let the kids – and yourselves – become wildlife explorers for the day.

Hensting Alpacas

Kiln Lane, Brambridge, Eastleigh, Hampshire, SO50 6HT (17 minute drive)

07876 234399, derek@alpacas-hampshire.co.uk, www.alpacas-hampshire.co.uk

Visit Otterbourne, Hampshire on a sunny day for a fun Alpaca walking tour, and feel the elation that walking outdoors can instill in you. Alpaca walking is a great weekend activity the whole family can enjoy. Exercise never felt so effortless as when you are leading a beautiful alpaca through the verdant countryside of Hampshire. This is something the kids are sure to enjoy.

TeamSport Indoor Karting

Barton Park, Chickehall Lane, Eastleigh, Hampshire, SO20 6RR (18 minute drive)

A dream come true for any karter, this Southampton course offers a real test of your abilities – with hairpin bends, double apex corners, a flyover and plenty of lengthy straights to open up on the throttle, TeamSport Southampton is as fast and furious as they come.

Useful information

The Hollies at a glance

Bedrooms and Bathrooms

- Sleeps 12
- Six bedrooms
- Three superking sized bedrooms
- Three twin bedrooms, one with zip and link
- Three en-suites
- One sofa bed
- One shared family bathroom

Cooking and Dining

- Cooking and Dining
- Modern kitchen
- AGA cooker
- One electric fan oven
- Dishwasher
- Washing machine
- Tumble dryer
- Dining table for 16
- Catering available
- Drop-off meals available
- BBQ
- Large terrace with dining table
- Good dining and pubs nearby
- Online deliveries

Where We Are

- The postcode is SO32 2DQ
- The nearest town is Botley
- The nearest station is Botley, a five-minute drive away
- The Solent is a 30-minute drive away
- The nearest airport is Southampton
- Taxis available
- Parking for up to eight cars

Things to Do Inside

- Freesat TV
- Fibre-optic Wi-Fi
- Den with games console, DVDs, books and board games

Things to Do Outside

- Hydro hot tub
- Large terrace

Useful information

- Five acres of gardens and woodland
- Zip wire

Activities

- Powerboat or sail on The Solent
- White water raft with Seadogz
- Country pursuits available nearby, including clay pigeon shooting and archery
- Watch a football match at St Mary's
- Local live music
- Visit historic Winchester Cathedral
- Wander around the UK's largest Farmer's Market in Winchester
- Pampering and beauty treatments at the house

Top Things to Do for Children

- Winchester science centre
- Animal adventures at Otterbourne
- Walk Alpachas at Marwell Wildlife
- Ski or snowboard at Alpine Snowsports Centre

Payment Process

- We take a one-third deposit at the time of booking
- The balance is due three months before the date booked

Cautionary Deposit

- £500 refundable deposit

House Restrictions

- Up to two well-behaved dogs welcome, sleeping downstairs
- No fireworks
- Hen parties welcome upon request, with noise restrictions
- Not suitable for stag parties

Arrival and Departure

- Check in from 4pm
- Check out 4pm Sunday
- Check out 12pm other days

What's Included

- Linen
- Towels
- Towelling robes
- Essentials
- Utilities
- Two travel cots
- Logs for wood burning stoves
- Welcome hamper

Guest reviews

"The Hollies is a true gem of a house with the friendliest vibe I think I've ever felt. It's as though some benevolent force is giving you a head massage and you totally de-stress from the moment you walk through the door." – **Nick**

"A group of 12 of us recently celebrated my husband's 50th birthday at The Hollies and had just the best time. The house is simply stunning, beautifully decorated, super comfy beds with crisp white linen and was everything we could have possibly hoped for. The highlight of the weekend was sitting in the cedar hot tub drinking champagne beneath a starlit sky! Can't wait to turn 50 myself so we can return!" – **Rachel**

"The Hollies is the place to go and dream and hide away from the world, I'd strongly recommend a stomp in the woods, a dip in the hot tub and a large gin & tonic by the fire – only problem is you will never want to leave!" – **Lisa**