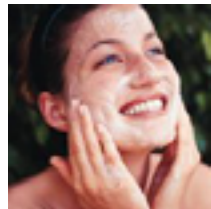


**kate & tom's**

*Extraordinary holidays, celebrations & adventures*



## Enjoying your stay at The Jaconbean Hall

*Everything you need to get the most out of your stay*

# Contents

---

Arrival . . . . .	.3
<i>Where we are</i> . . . . .	3
<i>Check in and check out</i> . . . . .	3
Cooking & dining - chef services. . . . .	.5
Cooking & dining - great places to eat & drink . . . . .	.6
Cooking & dining - shopping for food . . . . .	.8
Things to do - activities & pampering . . . . .	.9
Useful information . . . . .	14
Guest Reviews . . . . .	16

# Arrival

---

## Where we are

Please note that The Jacobean Hall is the marketing name we give to what is locally known as Pentrehobyn Hall.

Property Name:	Pentrehobyn Hall
Address:	Mold
County:	Flintshire
Postcode:	CH7 4HE

## Check in and check out

Check in time:	4pm
----------------	-----

Contact name for check in:	Tina Gittins, the housekeeper
Contact number for check in:	07758 816145

Check out time for 2 night weekend booking:	4pm	
Check out time for 3 night weekend booking:	10am	<i>A later check out is available</i>
Check out time for 7 night week bookings:	10am	<i>at an extra charge</i>

# Getting to us

---

The best postcode to use with Satnav is:	CH7 4HE
Nearest train station and distance:	Chester, 15 miles away
The nearest airport is:	Liverpool John Lennon International
Taxis available:	<b>Bee Line Taxis</b> 01352 755101

## **Directions to The Jacobean Hall**

The Jacobean Hall is set at the end of a long private drive, just outside Mold, Flintshire, and is surrounded by its own land to ensure complete privacy. It is very centrally positioned for North-West England and the entrance to the North-Wales Coast via the A55 road. It is a 25-minute drive from Chester, 45 minutes from Liverpool and an hour from Manchester. The nearest railway station is Chester, from which direct trains to London (Euston) take 2¼ hours. Pentrehobyn is well served by Liverpool and Manchester airports. Taxis can be arranged to collect guests from railway stations or airports, as required.

# Cooking & dining - chef services

---

You'll find our top recommendations below. If you do discover any other gems please do let us know and we will share them with other guests visiting the property.

## **Chef Services**

**Catherine Skates Catering**, Unit c22, Aber Road, Ashmount Enterprise Park, Flint CH6 5YL

Tel: 01352 733645 [www.catherineskates.co.uk](http://www.catherineskates.co.uk)

For over 25 years, Cathering has produced bespoke dining at its finest, whether it's for a small family BBQs, large corporate event, and birthday parties. Catherine can create a menu that's suitable for your style, tastes and budget.

# Cooking & dining - great places to eat & drink

---

As many of the pubs and restaurants listed are very popular, we advise you to book in advance to secure a table.

## Recommended pubs:

**Glasfryn**, Raikes Lane, Mold CH7 6LR - 2 miles

Tel: 01352 750500 [www.brunningandprice.co.uk/glasfryn](http://www.brunningandprice.co.uk/glasfryn)

This welcoming, nicely furnished pub-come-bistro has lots of good food on offer, and a plethora of wines to choose from, plus over 40 malt whiskeys behind the bar.

**The Druid Inn**, Ruthin Road, Clwyd CH7 5SN - 5 miles

Tel: 01352 810225 [www.thedruidinn.com](http://www.thedruidinn.com)

Traditional pub nestled deep in walking country - Loggerheads Country Park is just a stone's throw away. Inside it's spacious, modern and comfortable, with lots of real ales on offer and over 30 malt whiskeys to choose from. Food is simple, honest grub with daily specials on the board.

**The Pant-yr-Ochain**, Old Wrexham Road, Gresford, Wrexham LL12 8TY - 10 miles

Tel: 01978 853525 [www.brunningandprice.co.uk/pantyrochain](http://www.brunningandprice.co.uk/pantyrochain)

This fabulous 16th century inn is a spacious affair which appears more like a country manor house than a pub. Outside there are beautiful gardens and patioed seating areas, while inside there are light and open rooms for dining - the food is delicious. Behind the bar there is an impressive line up of drinks to choose from, from local ales to great wines and malt whiskeys.

## Restaurants

There are number of excellent restaurants in Chester, about 13 miles away.

**Joseph Benjamin Restaurant**, 134 – 140 Northgate Street, Chester CH1 2HT - 13 miles

Tel: 01244 344295 [www.josephbenjamin.co.uk](http://www.josephbenjamin.co.uk)

Fantastic restaurant which serves unpretentious yet delicious English-come-French cuisine. Expect dishes like Beef Brisket with saffron and potato veloute, and Hare bourguignon with parsley mash.

**Michael Caines at ABode Chester**, Grosvenor Road, Chester CH1 2DJ - 13 miles

Tel: 01244 347000 [www.abodechester.co.uk](http://www.abodechester.co.uk)

This hugely popular restaurant chain by acclaimed chef Michael Caines is situated on the top floor of the ABode hotel in Chester, and offers stunning views of the city and surrounding countryside. The eatery has numerous menus, from graze lunches, to a la carte, to evening table d'hote, to vegetarian, that suit any eater at any time of the day.

**Sticky Walnut**, 11 Charles Street, Hoole, Chester, CH2 3AZ - 14 miles

Tel: 01244 400400 [www.stickywalnut.com](http://www.stickywalnut.com)

Another great restaurant in Chester. This fresh, modern eatery is run by team of passionate, fervent foodies. Expect things on the menu like freshly baked focaccia, rolled and stuffed Pork belly and fresh honeycomb parfait to finish. There is also a children's menu that serves things like cheesy focaccia and tomato pasta.

## Cooking & dining - great places to eat & drink

---

**The Chef's Table**, Music Hall Passage, Chester CH1 2EU - 14 miles

Tel: 01244 403040 [www.chefstablechester.co.uk](http://www.chefstablechester.co.uk)

Using only fresh, seasonal food, this hip restaurant's menu changes daily. This place is heaven for food lovers: expect dishes like roast lamb rump with bury black pudding, whipped goats cheese, rosemary potatoes and mint sauce flavoured candyfloss.

**Upstairs at the Grill**, 70 Watergate Street, Chester CH1 2LA - 13 miles

Tel: 01244 344883 [www.upstairsatthegrill.co.uk](http://www.upstairsatthegrill.co.uk)

This inviting Manhattan-style joint is the perfect place to relax with friends and family and enjoy some truly excellent steaks. For non-steak lovers, there is plenty of other options, like pan-fried hake, Canadian lobster, and roast vegetable wellington.

# Cooking & dining - shopping for food

---

## **Nearest convenience store**

The Co-operative Food, Ambrose Lloyd Centre, Mold CH7 1NH - 1 mile

## **Supermarkets**

Tesco Mold Superstore, Ponterwyl, Mold CH7 1UB - 1 mile

Waitrose, 5af, 69 Boughton, Chester CH3 5AF - 14 miles

## **Butchers**

Hulsons, 37 Wrexham Street, Mold CH7 1ET - 1 mile

## **Farm shop**

Lesters Farm Shop, 76 Drury Lane, Buckley CH7 3DX - 5 miles



# Things to do - activities & pampering

---

Our top recommendations for activities and pampering are below.

## Clay pigeon shooting

**The Big Shoot Deeside**, Sealand Manor, Manor Road, Clwyd CH5 2SB - 8 miles

Tel: 0844 7455008 [www.thebigshoot.co.uk](http://www.thebigshoot.co.uk)

Offering excellent service for the enjoyable sport of clay pigeon shooting. Perfect for stag and hen parties, and also corporate events. The Big Shoot also has a clubhouse on-site which serves food for those who are peckish.

## Horse riding

**Alyn Bank Riding School**, Wrexham Rd, Mold CH7 4HG - 2 miles

Tel: 01352 770621 [www.horseriding-northwales.com](http://www.horseriding-northwales.com)

Friendly family-run horse riding centre, who can show the reigns to beginners, or take large groups on hacking adventures in the countryside and woodlands.

## Mountain biking and cycling

North Wales is one of the best places in the UK to go mountain biking and cycling, with lots of wooded trails crisscrossing through the natural landscape. A great place to go mountain biking is the **Llandegla Forest**, where there's 650 acres of hiking and mountain bike trails. There are fantastic facilities, including bike hire centres and an eco-cafe (which claims to make the best bacon sandwiches in Wales) We'll let you judge for yourselves.

**One Planet Adventure**, Coed Llandegla Forest, Ruthin Road, Llandegla, LL11 3AA - 10 miles

Tel: 01978 751656 [www.oneplanetadventure.com](http://www.oneplanetadventure.com)

## Paintballing

**Outpost Paintball**, Moor Lane, Chester CH4 9AQ - 7 miles

Tel: 01244 458384 [www.outpostpaintball.co.uk](http://www.outpostpaintball.co.uk)

17 game maps to battle on. Corporate teams are welcome, as are hens, stags and families.

## Golf

**Northop Golf Club**, Northop, Chester CH7 6WA - 6 miles

Tel: 01352 840440 [www.northopgolfclub.co.uk](http://www.northopgolfclub.co.uk)

Sitting in 250 acres of parkland, the Northop Golf Club was founded by former Ryder Cup player John Jacobs. It's a fantastic course maintained to perfection, with the clubhouse coming up trumps for a post-round pint.

## Water sports

At Colwyn Bay there's a growing water sports scene, and a number of companies operate in the area. **Colwyn Bay Watersports** offers tuition in windsurfing, powerboating, and sailing, and also the opportunities to hire kayaks, canoes and SUPs (Stand Up Paddleboards).

# Things to do - activities & pampering

---

**Colwyn Bay Watersports**, Porth Eirias, The Promenade, Colwyn Bay LL29 8HH - 30 miles  
Tel: 01492 437177 [www.colwynbaywatersports.co.uk](http://www.colwynbaywatersports.co.uk)

## Sea fishing

**Supreme Sea Services**, Kinmel Bay, Conwy LL18 5HZ - 28 miles  
Tel: 07795 086692 [www.supreme2.co.uk](http://www.supreme2.co.uk)

Try your hand at some deep-sea fishing and catch some dabs, mackerel, plaice, spotted dogfish and many more. Available for full chartered hire. Contact Steve Andrews on the numbers we've provided.

## Woodland skills

If you fancy trying something a bit different, then the **Woodland Skills Centre** offers lessons and workshops in anything from basket making, beekeeping, spoon carving and survival bushcraft. Perfect for families and anyone who wants to learn these fading - yet essential - skills.

**Woodland Skills Centre**, The Warren Bodfari, Denbigh, LL16 4DT - 13 miles  
Tel: 01745 710626 or 07711 472033 [woodlandskillscentre.co.uk](http://woodlandskillscentre.co.uk)

## Go Ape!

High above the ground and nestled amongst the tops of trees, Go Ape! is a high wire adventure course, complete with wobbly crossings and heart-stopping zip-lines, that will have you monkeying around all day. Go Ape! caters for families, corporate teams, children's parties and stag and hen parties, and booking can be done on the phone or on their website - we advise you to do it sooner rather than later in the busy spring and summer months to avoid disappointment. Minimum age: 10; minimum height: 1.4m; maximum weight: 20.5 stones.

**Go Ape! Delamere Forest**, Delamere Forest Park, Linmere, Cheshire CW8 2JD - 25 miles  
Tel: 0333 220 4361 [www.goape.co.uk/days-out/delamere](http://www.goape.co.uk/days-out/delamere)

## Snowdonia National Park

Less than an hours' drive away is Snowdonia, Wales' first national park, and almost certainly its most epic. There is plenty of hiking to be done here, but take extra care as the weather on the mountains can quickly become treacherous, so be prepared: take suitable clothing; take a map and compass *and* know how to use it, as GPS and phone signal fail regularly; and most importantly make sure someone who's not on the mountain knows where you're walking and when your estimated time of return is, so if they hear nothing from you, they know to contact the Mountain Rescue Team.

Standing at 1,085m, Mount Snowdon is the highest peak in both England and Wales and provides stunning views of the surrounding ranges. It's a fairly safe route to walk, however if your legs don't feel up to the challenge then you can always take the beautiful Swiss-style train that runs up the mountain all the way up to the summit.

## Llanberis Mountain Rescue Team

Tel: 07787471389 [www.llanberismountainrescue.co.uk](http://www.llanberismountainrescue.co.uk)

# Things to do - activities & pampering

---

## **Clwydian Range and Dee Valley**

Cited as an Area of Outstanding Natural Beauty, the Clwydian Range and Dee Valley are a dramatic chain of heather-clad summits, woods and Iron-Age forts. Both the **Loggerheads Country Park**, an 80-acre tree-lined limestone park with riverside walks, dramatic cliff faces and stunning views, and the famous **Moel Famau**, a giant hill with a ruin of a tower which first started being built in 1810, and was then battered by storms and collapsed in 1862, are worth a visit.

**Loggerheads Country Park**, Ruthin Rd, Mold CH7 5LH - 3 miles

Tel: 01352 810614

[www.clwydianrangeanddeevalleyaonb.org.uk](http://www.clwydianrangeanddeevalleyaonb.org.uk)

## **Pampering**

If, after a long day of activities, you want to put up your feet and relax then we can offer pampering services in the comfort of your property. There is a range of treatments available from a local therapist including massage, pedicure, manicure, etc. Please book well in advance.

## **My Personal Sanctuary**

Tel: 01625 540557 [www.mypersonalsanctuary.co.uk](http://www.mypersonalsanctuary.co.uk)

# Top things to do with children

---

Our top recommendations for outings with children are below.

**The Boardroom**, Rectors Lane, Pentre, Queensferry CH5 2DH - 7 miles

Tel: 01244 537476 [www.theboardroomclimbing.com](http://www.theboardroomclimbing.com)

This place is perfect to learn how to rock climb, all in a safe, secure environment. Kids are welcome, and have their own climbing area - the friendly team are also great at hosting birthday parties!

**Chester Zoo**, Chester CH2 1LH (for satnav, CH2 1EU) - 15 miles

Tel: 01244 380280 [www.chesterzoo.org](http://www.chesterzoo.org)

Home to a massive 12,000 animals and over 400 species. Tigers, elephants, bears, penguins, snakes, flamingos - you name it, they've got it. There's also animal talks and exhibitions which happen throughout the day, plus gardens to picnic in and a monorail to ride.

**ZipWorld Snowdonia**, Llechwedd Slate Caverns, Blaenau Ffestiniog LL41 3NB - 50 miles

Tel: 01248 601444 [www.zipworld.co.uk](http://www.zipworld.co.uk)

If you find yourself in Snowdonia, then a trip to ZipWorld is an absolute must: it has the longest zip line in Europe and the fastest in the world, reaching speeds of up to 100mph (for the more apprehensive, there's a more modest 'Little Zipper' line which helps build confidence). There's also a giant underground fun park with rope bridges, obstacles and tunnels.

**Bounce Below**, at Llechwedd Slate Caverns, Blaenau Ffestiniog LL41 3NB - 50 miles

Tel: 01248 601444 [www.bouncebelow.net](http://www.bouncebelow.net)

This surreal expanse of giant trampolines, walkways and slides is hidden away in a disused slate cavern that's twice the size of St Pauls Cathedral, and is sure to get your heart racing and your legs bouncing. For the little ones, there's also Junior Bounce area for 3-6 year olds.

**Blue Planet Aquarium**, Longlooms Road, Cheshire Oaks, Ellesmere Port CH65 9LF - 14 miles

Tel: 01513 578804 [www.blueplanetaquarium.com](http://www.blueplanetaquarium.com)

Home to Europe's largest collection of sharks, the Blue Planet Aquarium has over 100 displays brimming with ocean life. You can also go for a dive with the sharks; kids are welcome to take part, and for absolute beginners to scuba diving you will be taught basic dive techniques before coming face to face with 10ft tiger sharks.

**Cineworld**, Broughton Shopping Park, Chester Road, Broughton, Chester CH4 0DE - 8 miles

Tel: 0871 2002000 [www2.cineworld.co.uk/cinemas/broughton/information](http://www2.cineworld.co.uk/cinemas/broughton/information)

Showcases all the latest Hollywood blockbusters and indie pictures.

# Top places to visit & shop nearby

---

## **Chester**

Chester is a gorgeous market town that has kept many traditional charms and quirks. It has Roman roots, it being one of the largest forts during the empire's rule over the island, but now not much of that history remains, save the ruins of an amphitheatre and a Roman museum. Instead, there's an interesting blend of Victorian and Tudor architecture and a beautiful walkway which stands high over the main street, the **Chester Rows**. Here you will find independent and boutique shops. If you were looking for more familiar shopping then there is **Cheshire Oaks**, a designer outlet shopping centre which houses shops by Armani, Barbour, Burberry, and Ted Baker.

**Chester Roman Amphitheatre**, Little St. John Street, Chester CH1 1RE - 13 miles  
Tel: 0370 333 1181 [www.english-heritage.org.uk/visit/places/chester-roman-amphitheatre](http://www.english-heritage.org.uk/visit/places/chester-roman-amphitheatre)

**Dewa Roman Experience**, 1-2 Bridge Street, Chester CH1 1NL - 13 miles  
For parking: Little Roodee Carpark, Chester CH1 1SL  
Tel: 01244 343407 [www.dewaromanexperience.co.uk](http://www.dewaromanexperience.co.uk)

**Cheshire Oaks Designer Outlet**, Ellesmere Port, Cheshire CH65 9JJ - 14 miles  
Tel: 0151 3485600 [www.mcarthurglen.com/uk/cheshire-oaks-designer-outlet/en](http://www.mcarthurglen.com/uk/cheshire-oaks-designer-outlet/en)

## **Pontcysyllte Aqueduct & Canal**

Having received UNESCO World Heritage Site status in 1999, the Pontcysyllte Aqueduct & Canal is a truly remarkable feat of engineering and the world's tallest navigable aqueduct in the world, to boot. There's lots of different ways you can cross: walk, cycle, get horse drawn on a boat, or can hire your own narrow boat for the day and take the trip solo.

**Pontcysyllte Aqueduct & Canal World Heritage Site**, 18 miles  
Tel: 01978 292015 [www.pontcysyllte-aqueduct.co.uk](http://www.pontcysyllte-aqueduct.co.uk)

**Llangollen Wharf**, Wharf Hill, Llangollen LL20 8TA - 17 miles  
Tel: 01978 860702, [www.horsedrawnboats.co.uk](http://www.horsedrawnboats.co.uk)

From here you can take horse-drawn boat trips or hire a private charter for the day from the picturesque Llangollen Wharf. You will float through a beautiful stretch of the canal before arriving at the aqueduct, where you will then be awarded with a stunning Welsh landscape.

## **Clywd Theatre**

**Clwyd Theatr Cymru**, Raikes Lane, Mold CH7 1YA - 2 miles  
Tel: 01352 756331 [www.clwyd-theatr-cymru.co.uk](http://www.clwyd-theatr-cymru.co.uk)

A fantastic arts centre showcasing some excellent stage plays that rival even the big cities. Be sure to check the website for listings.

# Useful information

---

## **The Jacobean Hall at a glance:**

### **Bedrooms and Bathrooms**

- Sleeps up to 14
- Seven bedrooms, one of which has an ensuite bathroom
- Two super kingsize beds, four kingsize, and one double
- Two of the rooms are zip and link and can be set up as either super kingsize or twin
- Three children's camp beds can be provided on request
- Downstairs WC
- Accommodation for a further 8 guests is available in The Coach House close by for an extra charge, please enquire for further details

### **Cooking and Dining**

- Dining table seats 18 comfortably
- Fantastic chef available for a special meal or throughout the weekend
- Drop-off meals available
- Four oven Aga and an electric range cooker
- Coal BBQ, bag of charcoal included
- Table and chairs on terrace
- Great dining nearby
- Online deliveries

### **Children Welcome**

- Toys, books and DVDs for children
- Two cots available
- One high chair

### **Where We Are**

- The postcode is CH7 4HE
- The nearest town is Mold, a mile away
- The nearest train station is Chester, a 20 minute drive
- The nearest airport is Liverpool
- Taxis available
- Plenty of parking available

### **Things to Do Inside**

- Large 50" TV with Sky
- DVD Player and DVDs
- iPod Dock
- Wi-fi

# Useful information

---

## Things to Do Outside

- 100 acres of gardens and parkland
- 3 acres of walled garden
- Croquet set
- Table tennis table

## Activities

- Country pursuits available nearby, including clay pigeon shooting and archery
- Paintballing
- Horse riding
- Pampering and beauty treatments at the house

## Top Things to Do for Children

- Chester Zoo
- Ffestiniog
- Go Ape

## Payment Process

- We take a one third deposit at the time of booking
- The balance is due three months before the date booked

## Cautionary Deposit

- £1000 refundable deposit

## House Restrictions

- No pets please
- Hen and Stag parties welcome

## Arrival and Departure

- Check in 4pm
- Check out 4pm on a Sunday
- Check out 10am on other days

## What's included

- Linen
- Towels
- Essentials
- Utilities

# Guest Reviews

---

***“Thank you for a truly fantastic stay! Tina was fabulous and we have all fallen in love with this amazing house!” - Jenny***

***“We truly enjoyed our stay in your beautiful home. It was so nice to spend family time in a home that could accommodate our large family. We had so much fun and made memories that I will treasure. Wales is an amazing place” - Robin***

***“ We have treasured every moment in this special place. Tina was a blessing, Bells a fine chef; everything around us was beautiful!” - Esther***