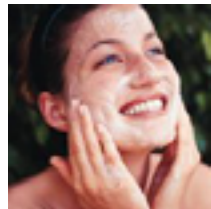


**kate & tom's**

*Extraordinary holidays, celebrations & adventures*



**Enjoying your stay at**  
The Lake House at Raithwaite

*Everything you need to get the most out of your stay*

# Contents

---

Arrival . . . . .	.3
<i>Where We Are</i> . . . . .	3
<i>Check in and check out</i> . . . . .	3
Getting to us . . . . .	.4
<i>Directions to Wilderness Reserve</i> . . . . .	4
Cooking & dining - chef services . . . . .	.5
Cooking & dining - great places to eat & drink . . . . .	.6
Cooking & dining - shopping for food . . . . .	.7
Things to do - activities and pampering . . . . .	.8
Top things to do with children . . . . .	11
Top places to visit & shop nearby . . . . .	12
Useful information . . . . .	13
Guest reviews . . . . .	16

# Arrival

---

## Where We Are

Property Name: The Lake House at Raithwaite Estate  
Address: Sandsend Road  
Whitby  
County: North Yorkshire,  
Postcode: YO21 3ST

## Check in and check out

Check in time: 4pm  
Contact name for check in: Reservations team  
Contact number for check in: 01947 661661

Check out time for 2 night weekend bookings: 10am  
Check out time for 3 night weekend bookings: 10am  
Check out time for 7 night week bookings: 10am

# Getting to us

---

The best postcode to use with satnav is:

YO21 3ST

Nearest train station and distance:

Whitby, 3 miles

Taxis are available:

White Rose Taxis

01947 604604

[www.whiterosetaxis.co.uk](http://www.whiterosetaxis.co.uk)

The nearest airports are:

Durham Tees Valley International Airport, 40 miles

Newcastle International Airport, Woolsington, Newcastle

upon Tyne NE1 3 8BZ, United Kingdom

## Directions to The Lake House at Raithwaite

Follow signs for Whitby on the A169. Once on the A169, travel for about 18.5 miles/25 minutes until you reach a roundabout just outside of Whitby. Take a right, third exit, towards Whitby, then the second exit towards Sansend on the B1460. As you reach the peripheries of Whitby, you will approach a T-junction - take the left turning, still following signs for Sansend. Travel on this road for 1 mile, with the sea and golf course on your right. When you start to descend the hill, the entrance to the Raithwaite Estate will be first turning on your left, opposite a county council car park. Drive down this lane for about half a mile, and you will reach the Estate. The Lake House will be at the end of the road.

# Cooking & dining - chef services

---

## **Catering services**

The team at Raithwaite Estate can arrange expert caterers from around the North York Moors area. They can advise you on the best local providers to suit your gathering. Contact them on 01947 661661 to find out more information.

# Cooking & dining - great places to eat & drink

---

As these pubs and restaurants are very popular all year round, we advise you to always book well in advance if you are eating.

## Nearest pub

### Hart Inn, East Row, Whitby YO21 3SU - 20/25 minute walk

Friendly pub with Black Sheep ales on tap. Food is traditional yet plentiful.

## Best pubs in the area

### The Duke Of York, 124 Church Street, Whitby YO22 4DE - 3 miles

01947 600324 [www.dukeofyork.co.uk](http://www.dukeofyork.co.uk)

Enjoy lots of real ales, wines and malts in this cosy little pub on the harbour, at the foot of the '199 steps' up to the grand Whitby Abbey.

### Birch Hall Inn, Beck Hole Road, Whitby YO22 5LE - 10.5 miles

Previous winner of CAMRA's coveted 'Pub of the Year' award, the Birch Hall Inn is an eclectic place nestled in a beautiful river valley. The owners are extremely friendly and serve some excellent beers and wines.

### The Laurel Inn, Bay Bank, Robin Hood's Bay YO22 4SE - 8 miles

Delightful, unspoilt pub found in the charming village of Robin Hood's Bay. There's some great real ales here, but sadly, no food.

## Best restaurants

### Woodlands Restaurant & Bar A174, East Row, Whitby YO21 3SU - 1 mile

01947 893899 [www.thewoodlands-sandsend.com](http://www.thewoodlands-sandsend.com)

A refreshing eatery just off the beach at Sandsend. Bold, comforting flavours take centre stage, with delights such as smoked haddock florentine to commence and braised venison haunch, creamy mash and dumplings coming up trumps. For lunch, there's delicious sandwiches and cakes that, if the weather's nice, can be enjoyed outside in the floral garden.

### Magpie Café, 14 Pier Road, Whitby YO21 3PU - 3 miles

01947 602058 [www.magpiecafe.co.uk](http://www.magpiecafe.co.uk)

This is a much loved seafood restaurant, adored by both locals and visitors. Many say that they serve the best fish and chips in the world - but we'll let you be the judge of that. A plethora of fish are on the menu, including gunard, pollock, hake, woof, skate wing and monk.

### The Moon & Sixpence, 16 Marine Parade, Whitby YO21 3PR - 3 miles

01947 604416 [www.moon-and-sixpence.co.uk](http://www.moon-and-sixpence.co.uk)

Modern brasserie situated right on the waterfront at the picturesque Whitby. Seafood features prominently; expect cod, smoked haddock and fresh herb fishcakes with citrus mayo to start and pan fried king scallops with slow roasted pork belly, pea puree & chorizo to follow. Delicious crème brûlée to finish.

# Cooking & dining - shopping for food

---

## **Nearest convenience shops**

The Co-operative Food, Langborne Road, Endeavour Wharf, Whitby YO21 1DH - 2.5 miles

## **Bigger supermarkets**

Sainsbury's Superstore, Stainsacre La, Whitby YO22 4NL - 3.5 miles  
They can deliver to the property.

## **Bakery**

Stonehouse Bakery, High St, Saltburn-by-the-Sea TS13 4HG - 14 miles

## **Delicatessen**

Dolly's Deli, 17 Skinner St, Whitby YO21 3AH - 2.5 miles

## **Butchers**

Breckon Butchers, 6 Golden Lion Bank, Whitby YO21 3BS - 2.5 miles

## **Fishmongers**

The Whitby Catch, 1 Pier Road, Whitby, North Yorkshire YO21 3PT - 2.5 miles

# Things to do - activities and pampering

---

We strongly advise that all extras and activities are booked as early as possible after booking to avoid disappointment. Our top recommendations for activities and pampering are below.

## **Watersports**

The North-East coast of England may not immediately conjure up images of Mediterranean sunspots and warm micro-climates, but you'd be wrong for thinking that the area is void of water activities. Indeed, this is a region very much geared up for watersports, and home to some of the best surf spots in the UK - all one requires is a slightly thicker wetsuit. Just over 30 minutes drive away is Saltburn-by-the-Sea, a premier surf spot with some excellent surf schools, while at Whitby the waves are smaller, making it perfect for beginners and children, and also stand-up paddleboarding (SUPs). You can either hire out boards or take lessons at both of these schools.

**Saltburn Surf School**, Lower Promenade, Saltburn-by-the-Sea TS12 1NY - 17 miles  
For hire: 07587 00639; for surf school: 07961 714993 [www.saltburn-surf.co.uk](http://www.saltburn-surf.co.uk)

**Whitby Surf School**, Lower Cliff Lift, West Cliff Beach, Whitby YO21 3EN - 2.5 miles  
07794 271957 [www.whitbysurfschool.co.uk](http://www.whitbysurfschool.co.uk)

For boating and canoeing, the River Esk's calm waters are perfect. **Runswarp Pleasure Boats** hire out rowing boats and canoes on the shallow waters. Drive up north to **East Barnby Outdoor Education Centre**, and you can go kayaking, river swimming and take sailing and windsurfing lessons.

**Runswarp Pleasure Boats**, The Carrs, Whitby YO21 1RL - 4.5 miles  
01947 604658 [www.ruswarp-pleasure-boats.co.uk](http://www.ruswarp-pleasure-boats.co.uk)

**East Barnby Outdoor Education Centre**, Wades Ln, East Barnby YO21 3SA - 4 miles  
01947 893333 [www.outdoored.co.uk](http://www.outdoored.co.uk)

For sailing, **Scaling Dam** offers RYA lessons and taster sessions at a nearby reservoir, with conditions perfect for beginners. Windsurfing can also be done here.

**Scaling Dam Sailing Club**, Whitby Moor Road, Saltburn-by-the-Sea TS13 4TP  
01287 643026 [www.scalingdam.org](http://www.scalingdam.org)

## **Fishing**

Whitby is famous for sea fishing, and there's numerous charter boats in the harbour that can take you out to sea, ranging from three hour mackerel trips to full-day off-shore charters. **The Whitby Charter Skippers Association** has a list of skippers which you can contact.

**Whitby Charter Skippers Association**  
[www.wcsa.co.uk](http://www.wcsa.co.uk)



# Things to do - activities and pampering

---

If you want to try your hand at river fishing then the River Esk is full of salmon and sea trout. At Ruswarp, you can buy permits from the owners of **Ruswarp Pleasure Boats** (mentioned above).

You can also go lake fishing at **Scaling Dam Reservoir** - you can also buy rods, tackle and bait there.

## Golf

Just down the road is **Whitby Golf Club**, home to a pleasant, relatively easy 18-hole course - providing the wind isn't too strong. The views of the coastline are stunning.

**Whitby Golf Course**, Low Straggleton, Sandsend Road, Whitby YO21 3SR - 1 mile/15 minute walk  
01947 600660 [www.whitbygolfclub.co.uk](http://www.whitbygolfclub.co.uk)

## Adventure activities

Situated in a beautiful part of the Dalby Forest and with stunning views of the Vale of Pickering. Full of hire-wires, wobbly crossings and heart-stopping zip-lines, Go Ape! is adrenaline-fuelled day out that caters for families, corporate teams, children's parties and stag and hen parties. Booking can be done on the phone or on their website, and we advise you to do it sooner rather than later in the busy spring and summer months to avoid disappointment. Minimum age: 10; minimum height: 1.4m; maximum weight: 20.5 stones. Go Ape! also offers you the chance to go for a segway adventure through the forest which is great fun!

**Go Ape!** Visitors Centre, Pickering YO18 7LT - 21.5 mile  
[www.goape.co.uk/days-out/dalby](http://www.goape.co.uk/days-out/dalby)

## Husky rides

If the weather is suitable - and by that we mean cool and cloudy - you can go for an hour and a half or 3 hour ride or trek with huskies on purpose built scooters. Corporate teams, families and big parties are all welcome.

**Pesky Husky**, Meeting House Farm, Staintondale, Scarborough YO13 0EL - 15 miles  
01723 870521 [www.peskyhusky.co.uk](http://www.peskyhusky.co.uk)

## Horse riding

Deep in the beautiful North Yorkshire Moors is Hollin Equestrian Centre, a family-run business that offer hacks in the surrounding countryside and lessons for small groups.

**Hollin Hall**, Great Fryupdale, Lealholm, Whitby YO21 2AS - 12.5 miles  
07929 269291 [www.hollinequest.co.uk](http://www.hollinequest.co.uk)

# Top things to do with children

---

Our top recommendations for outings with children are below.

## **Whale watching**

While Whitby was once a town that prospered on the hunting of whales, it now is far removed from its past and runs whale watching boat trips, in the hope that it will inspire the next generation to keep trying with conservation efforts. July to September are the most likely months to spot some.

**Whitby Whale Watching**, 14 St Ann's Staith, Whitby YO21 3PW - 3 miles  
07941 450381 [www.whitbywhalewatching.net](http://www.whitbywhalewatching.net)

## **Pottery painting**

Unleash the Picasso within: Doodle Pots is a treasure trove of creativity, perfect to visit when the weather's not great. Lots of ceramics to choose, from plates, animals, mugs - over 100 in fact. Be sure to visit early on as it can take up to 3-4 days for the ceramics to fire and glaze.

**Doodlepots**, 5B Skinner Street, Whitby YO21 3AH - 2.5 miles  
01947 825824 [www.doodlepots.co.uk](http://www.doodlepots.co.uk)

## **Dracula in Whitby**

If you've read Bram Stoker's "Dracula" then you'll know that Whitby is featured heavily in the novel. Stoker visited the town in 1897 and instantly fell in love with it. There's a fun exhibition in town that tells the story with electronics and live actors, and at the tourist office, you can buy a Dracula Trail leaflet which will take you to the Bram Stoker memorial seat on Khyber Pass, and past all the settings used in the novel.

**The Dracula Experience**, 9 Marine Parade, Whitby YO21 3PR - 3 miles  
01947 601923 [www.draculaexperience.co.uk](http://www.draculaexperience.co.uk)

**Whitby Tourist Information Centre**, Langborne Rd, Whitby YO21 1YN - 3 miles  
01723 383636

## **Rainy day?**

Whitby Pavilion has a nice little cinema which shows the latest blockbusters.

**Whitby Pavilion**, Whitby, North Yorkshire YO21 3EN - 2.5 miles  
01947 458 899 [www.whitbypavilion.co.uk](http://www.whitbypavilion.co.uk)

# Top places to visit & shop nearby

---

## **Whitby**

Whitby is an enchanting town with lots to see and do, complete with a fine, sandy beach, traditional fish market, crumbling Abbey, amusement arcades and ice-cream parlours. The town has kept its 18th century charm, with its narrow streets hugging the riverside, bedecked with restaurants, pubs and shops. Whitby Abbey is well worth a visit, as its creepy ruins mark the dramatic landfall in Stoker's Dracula - it's also a favourite pilgrimage site for Goths.

## **North York Moors National Park and Steam Railway**

Considered by many as one of the most picturesque railway journeys in the UK, the North York Moors Steam Railway is also the world's most popular heritage steam train, and is the perfect way to enjoy this outstanding national park. Setting off from Whitby Train Station, the train goes straight into the heart of the park, taking you through wooded vales and wild, windswept ridge-tops. A whole day can be spent on this train, and you can get off in various places and explore the surrounding countryside.

# Useful information

---

## **The Lake House at Raithwaite at a glance**

### **Bedrooms and Bathrooms**

- Sleeps up to twelve
- Six bedrooms, three en-suite bathrooms, and one shared bathroom

### **Cooking and Dining**

- Dining table seats 12 guests
- Fantastic chef available for a special meal or throughout the weekend
- Drop off meals available
- Barbeque
- Table and chairs on terrace

### **Children Welcome**

- Cots available

### **Where We Are**

- The postcode is YO21 3ST
- Parking available for three cars
- The nearest town is Whitby
- The nearest train station is
- The nearest airport is
- Taxis available
- Parking for up to three cars

### **Things to Do Inside**

- Wi-fi

### **Things to Do Outside**

- Extensive spa and fitness facilities on the Raithwaite Estate, including pool, steam room and whirlpool

### **Activities**

- Country pursuits such as clay pigeon shooting
- Quad biking
- Horse riding
- Fossil hunting
- Golf
- Cycling

### **Top Things to Do for Children**

- The North Yorkshire Moors National Park
- The North Yorkshire Moors Railway

# Useful information

---

## **Payment Process**

- We take a one third deposit at the time of booking
- The balance is due three months before the date booked

## **Cautionary Deposit**

- £500 refundable deposit

## **House Restrictions**

- Up to two well behaved dogs allowed
- No hen or stag parties please

## **Arrival and Departure**

- Check in 3pm
- Check out 10am on a Sunday
- Check out 10am on other days

## **What's Included**

- Linen
- Towels
- Essentials
- Utilities
- Electronic security gate

# Guest reviews

---

"We stayed at The Lake House in January for a family celebration there were twelve of us in the party. We all have only positive feedback about our stay and would recommend The Lake House to others wanting to stay in a large property in this area." - Susan

"What a wonderful place for a gathering of family and friends. The house is stunning in a peaceful rural location not far from the sea/beach. Spotlessly clean, well equipped to a very high spec." - Jayne

"I recently stayed at the property with friends and family to celebrate my mother-in-law's birthday. There were 10 adults and 1 child in the house and, due to the size of the property, it never felt crowded." - Ben