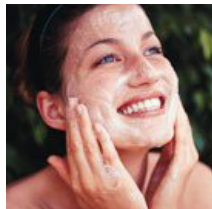
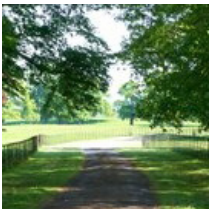


kate & tom's

Extraordinary holidays, celebrations & adventures



**Enjoying your stay at
The Mansion House**

Everything you need to get the most out of your stay

Contents

Arrival	3
<i>Where We Are</i>	3
<i>Check in and check out</i>	3
Getting to Us	4
Cooking & dining - chef services.	6
Cooking & dining - great places to eat & drink	7
Cooking & Dining - Shopping for Food	9
Things to do - activities and pampering	10
Top places to visit and shop nearby	12
Useful information	14
Guest Reviews	16

Arrival

Where We Are

Property Name: The Mansion House
Address: Kirkhill Mansion
Gorebridge
County: Midlothian
Postcode: EH23 4LJ

Check in and check out

Check in time: 4pm

Contact name for check in: David
Contact number for check in: 07833 085 585

Check out time for 2 night weekend booking: 10am Sunday
Check out time for 3 night weekend booking: 10am Monday
Check out time for 7 night week bookings: 10am Friday

Nearest Train station and distance: Waverley, a 32 minute drive

The nearest airport is: Edinburgh

Getting to Us

The best postcode to use with Satnav is: EH23 4LJ

Nearest Train station and distance: Waverley, a 32 minute drive

Directions:

From the M6:

Continue onto A74 (M)

At junction 15, take the A701 exit to Dumfries / Beattock / Moffat / Selkirk / A708

At the roundabout, take the 1st exit onto A701

Go through 2 roundabouts

Continue onto A72

Keep left to stay on A72

Continue onto A701

Continue onto A6094

At the roundabout, take the 3rd exit and stay on A6094

Go through 1 roundabout

At the roundabout, take the 2nd exit onto B6392

At the roundabout, continue straight to stay on B6392

Go through 1 roundabout

At the roundabout, take the 3rd exit onto Cockpen Rd / B704

Continue to follow B704

Turn right onto A7

Go through 1 roundabout

Turn right at Engine Rd

Getting to Us

Partial restricted usage road

Slight left

Restricted usage road

Cooking & dining - chef services

You'll find our top recommendations below. If you do discover any other gems please do let us know and we will share them with other guests visiting the property.

Drop-off meal service

Charletto and Lorretto Catering
01316 54 9156

Cooking & dining - great places to eat & drink

Nearest pub

The New Hunterfield Tavern, 119 Hunterfield Rd, Gorebridge, Midlothian EH23 4TU (3 minute drive)

Pubs

The Steading, 118-120 Biggar Rd, Edinburgh, Midlothian EH10 7DU

0131 445 1128

Comfortable country inn with real ales, bright dining area, Pentland views from large beer garden.
www.thesteadingedinburgh.co.uk

The Sun Inn, Lothian Bridge, Dalkeith EH22 4TR

0131 663 2456

www.thesuninnedinburgh.co.uk

The Roadhouse, 136 John St, Penicuik, Midlothian EH26 8NJ

01968 678 405

www.penicuikfolk.org.uk

The Blackbird Bar and Restaurant, Leven St

01312 282 280

Relaxed cafe-bar with exposed stone, serving modern Scottish dishes alongside cocktails and coffee.
www.theblackbirdedinburgh.co.uk

Restaurants

Dalhousie Castle Hotel, Bonnyrigg, Edinburgh, Midlothian EH19

01875 820153

Elegant castle hotel with medieval-themed rooms, 4-poster beds, spa and fine dining in the Dungeon.
www.dalhousiecastle.co.uk

Cooking & dining - great places to eat & drink

The Shore, 3 Shore, Edinburgh EH6 6QW
0131 553 5080

Panelled and mirrored waterside bar-restaurant with seafood specials, live jazz or acoustic music.
www.fishersbistros.co.uk

Plumed Horse, 50-54 Henderson St, Edinburgh, Midlothian EH6 6DE
0131 554 5556

Tony Borthwick's creative modern British cuisine.
www.plumedhorse.co.uk

The Sutherland Restaurant, Cringletie House Hotel, Edinburgh Road, Peebles, Scottish Borders EH45 8PL
01721 725750
www.cringletie.com

Top places to eat out with children

Itihaas, 17/19 Eskbank Rd, Dalkeith, Midlothian EH22 1HD
0131 663 9800

Modern, family friendly, restaurant with Bangladeshi dishes, an Indian tapas menu and takeaway.
www.itihaasrestaurant.com

Cooking & Dining - Shopping for Food

Best local supermarket:

Scottish Midland Co-op, 114 Hunterfield Rd, Gorebridge EH23 4TX
01875 820 461

Butcher:

Aytoun's, 47 Main St, Gorebridge, Midlothian EH23 4BX
01875 820 368

Greengrocer:

Gojra Grocers, 30 Barleyknowe St, Gorebridge, Midlothian EH23 4FH
01875 820 434

Major supermarket online orders:

Sainsbury's
www.sainsburys.co.uk

Morrisons
www.morrisons.com

Tesco
www.tesco.com

Things to do - activities and pampering

Our top recommendations for activities and pampering are below.

Quad biking

Henry Dundas Estate (less than a mile away)

Clay pigeon shooting, quad biking and a number of other activities such as swimming with sharks at Queensferry, Zorbing in Perthshire or helicopter trips over the Forth Road Bridge. Enquire further for more details on availability and prices.

Clay pigeon shooting

Henry Dundas Estate (less than a mile away)

Horse riding

Edinburgh & Lasswade Riding Centre, Kevock Rd, Lasswade, Midlothian EH18 1HX
0131 663 7676

Riding school for people of all abilities, with 50 horses and indoor/outdoor training facilities.
www.lasswadestables.com

Adventure Sports

Falconry Scotland

A falconry experience can be arranged to take place on the estate. Please book well in advance and enquire for prices and availability.

Winter sports

If you are into snow sports, The Mansion House can make your skiing and snowboarding dreams come true. With an artificial, all year, ski slope in close proximity. Please book well in advance and enquire if you wish to learn to ski or snowboard, improve your skiing, or just want a little extra practice.

The Hill End instructors are all BASI/CASI, qualified and can teach complete beginners to race training and freestyle coaching. Hill End, has a reputation in providing only the best in snow-sport training and has been the training ground for 28 olympic skiers including: Finlay Mickel and Stuart Fitzimmons.

Things to do - activities and pampering

Archery

Archery sessions can be arranged to take place on the estate. Please book well in advance and enquire for prices and availability.

Fishing

Loganlea Trout Fishery, Pentland Hills Regional Park, Carlops Rd, Penicuik, Midlothian EH26 0PP
01968 676329
www.rosslynleetroutfishery.co.uk

Golf

Whitehill House Golf Course, Whitehill House, Rosewell EH24 9EG
01314 400 594
www.whitehillhousegolf.com

Pampering

For pampering in the comfort of your property, there is a range of treatments available from a local therapist including massage, pedicure, manicure, etc. Please book well in advance.

Please enquire via My Personal Sanctuary (www.mypersonalsanctuary.co.uk) via telephone number 01625 540 557 or email enquiries@mypersonalsanctuary.co.uk.

Top places to visit and shop nearby

Gore Glen Woodland Park, Midlothian

Rehabilitated coal site with a system of waymarked paths. The park is predominantly woodland in character having been planted in 1979 with a range of species to enhance the natural setting. Gore Glen is managed and patrolled by Midlothian Ranger Service.

Starting from the main car park, take the path running south parallel to the A7. At the end of the conifer woodland, a path junction indicates a steep path descending to your right. Keep left at this point and continue following the path along the boundary fence until you come to a set of steps on your right, after about 250m.

Take the steps down into the valley and the Gore Water – a tributary of the River South Esk. Turn right and follow the path along the river. The Gore Water supports a range of water birds including Kingfisher, Dipper and Heron.

Borthwick Castle, North Middleton, Gorebridge, Midlothian EH23 4QY (9 minute drive)

01875 820 514

Castle linked to Mary Queen of Scots, with 12 period bedchambers and dining in the Great Hall.
www.borthwickcastle.com

Crichton Castle, Crichton, Pathhead, Midlothian EH37 5XA (11 minute drive)

01875 320 017

14th-century castle with diamond-faceted facade and a pit prison, in an isolated riverside setting.
www.historic-scotland.gov.uk/propertyplan/propertyoverview.htm?PropID=pl_076&PropName=Crichton%20Castle

Rosslyn Chapel, Chapel Loan, Roslin, Midlothian EH25 9PU (16 minute drive)

01314 402 159

Intricately carved chapel built in 1446, featured in The Da Vinci Code movie, with history talks.
www.rosslynchapel.org.uk

Scottish Mining Museum, Lady Victoria Colliery, Newtongrange, Dalkeith, Midlothian EH22 4QN (5 minute drive)

01316 637 519

Colliery museum with collection of machinery and hands-on exhibits, plus guided tours by ex-miners.
www.scottishminingmuseum.com

Top places to visit and shop nearby

Edinburgh Spooky night tour, Auld Reekie Tours, 45 Niddry St, Edinburgh EH1 1LG (30 minute drive)

0131 557 4700

www.auldreekietours.com

Edinburgh International Festival

The world-renowned festival brings the very best in classical music, theatre, opera, dance and visual art from across the globe to Edinburgh for three exhilarating weeks.

www.eif.co.uk

Edinburgh Fringe Festival

The Edinburgh Festival Fringe is the largest arts festival in the world and takes place every August for three weeks in Scotland's capital city.

www.edfringe.com

Dynamic Earth, 112-116 Holyrood Gait, Edinburgh, Midlothian EH8 8AS (30 minute drive)

0131 550 7800

State-of-the-art family attraction taking visitors through history from the Big Bang to modern day.

www.dynamicearth.co.uk

Deep Sea World, Forthside Terrace, North Queensferry, Fife KY11 1JR (41 minute drive)

01383 411880

Sea life aquarium with seal enclosure and shark tank with 112-metre walk-through acrylic tunnel.

www.deepseaworld.com

Useful information

The Mansion House at a glance:

Bedrooms and Bathrooms

- Sleeps 34 guests
- There are 12 bedrooms
- There are four bedrooms on the ground floor
- There are eight bedrooms on the first floor

Cooking and Dining

- The main dining room seats 22 guests
- Additional marquee space available seating up to 70 guests
- Good dining nearby
- Online deliveries
- Chef available for catering

Where we are

- The postcode is EH23 4LJ
- The nearest town is Gorebridge, 1.5miles away
- The nearest airport is Edinburgh
- Taxis available
- Plenty of parking available

Things to do Inside

- Dart Board
- Pool Table
- Large Flat Screen TV
- Books
- Piano

Things to do Outside

- 30 acres of gardens and grounds
- River Esk running across boundaries
- Terrace garden
- Garden Furniture

Activities

- Archery
- Falconry
- Quad Biking
- Clay Pigeon Shooting

Useful information

Payment process

- We take a one third deposit at the time of booking
- The balance is due three months before the date booked

Cautionary deposit

- £500 refundable deposit

House restrictions

- No pets please
- No fireworks please
- Suitable for stag parties

Arrival and Departure

- Check in 4pm
- Check out 10am

What's included

- Linen
- Towels
- Utilities

Guest Reviews



"I can only say it was absolutely fantastic!" - *Adam*

"Very luxurious and the grounds were beautiful and full of wildlife. A little slice of Scottish heaven." - *Lee*