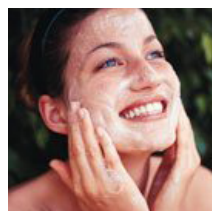
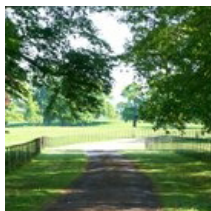


**kate & tom's**

*Extraordinary holidays, celebrations & adventures*



## Enjoying your stay at The Old Byre and Granary

*Everything you need to get the most out of your stay*

# Contents

---

Arrival . . . . .	.3
<i>Where We Are</i> . . . . .	3
<i>Check in and check out</i> . . . . .	3
Getting to us . . . . .	.4
Cooking & dining - chef services. . . . .	.5
Cooking & dining - great places to eat & drink . . . . .	.7
Cooking & dining - shopping for food . . . . .	.9
Things to do - activities and pampering . . . . .	10
Top things to do with children. . . . .	12
Top places to visit & shop nearby . . . . .	13
Useful information . . . . .	14
Guest reviews . . . . .	17

# Arrival

---

## Where We Are

Property Name: The Old Byre and Granary  
Address: The Barns at Upper House  
Lyonshall  
County: Herefordshire  
Postcode: HR5 3JN

## Check in and check out

Check in time: 4pm

Check out time for 2 night weekend bookings: 4pm Sunday  
Check out time for 3 night weekend bookings: 10am Monday  
Check out time for 7 night week bookings: 10am Friday

Nearest Train station and distance: Leominster; 12 miles away  
The nearest airport is: Birmingham International

# Getting to us

---

The best postcode to use with Satnav is: HR5 3JN  
Nearest Train station and distance: Leominster, 12 miles away

## Directions:

Merge onto M5 via the ramp to The Midlands / Tewkesbury / Worcester  
At junction 8, take the M50 exit to S.Wales / Ross  
At the roundabout, take the 1st exit onto M50 heading to South Wales / Ross  
At junction 2, take the A417 exit to A438 / Hereford / Ledbury  
Turn right onto Gloucester Rd / A417  
At the roundabout, take the 1st exit onto Leadon Way / A449  
At the roundabout, take the 2nd exit onto Ross Rd / A449  
Continue to follow A449  
At the roundabout, take the 3rd exit onto A4172  
Turn left onto A438  
Turn right toward A4103  
Turn left onto A4103  
Follow A4103 and A480 to A4112  
At the roundabout, continue straight onto Roman Rd / A4103  
At the roundabout, take the 2nd exit and stay on Roman Rd / A4103  
Continue to follow A4103  
At the roundabout, take the 3rd exit onto A480  
Slight left to stay on A480  
Slight left onto A4112  
Follow A480 to your destination  
Take the 1st right onto A480  
Turn left  
Turn right  
Destination will be on the left.

# Cooking & dining - chef services

---

You'll find our top recommendations below. If you do discover any other gems please do let us know and we will share them with other guests visiting the property.

## **Drop-off meal service and catering**

### **Rococo catering**

[enquiries@rococo-catering.com](mailto:enquiries@rococo-catering.com)

**Tel: 0845 647 4757**

[www.rococo-catering.com](http://www.rococo-catering.com)

With fabulous food from great produce sourced, where possible, locally, Rococo provides an excellent service for your celebrations.

### **Sarah Norman**

[sarah@theleen.co.uk](mailto:sarah@theleen.co.uk)

Sarah Norman from The Leen farm is an excellent chef who can drop off prepared meals, hearty home food and children's suppers.

### **The Cider Barns**

[info@the-cider-barn.co.uk](mailto:info@the-cider-barn.co.uk)

Another lovely service that can deliver pre-prepared food from a choice of menus. For more information contact chef Sophie via email.

### **Lyn Bullock**

**Mob: 07836 708958**

A dynamic and professional chef who can provide anything from tasty canapés, to light meals, to first-class silver service. Contact her via her mobile number for more information.

### **Cordon Blue Cook Dorcas**

**Tel: 01497 847988**

[dorcas@beetonfortime.com](mailto:dorcas@beetonfortime.com)

Provides a catering service which can last a whole weekend, from breakfast to dinner.

### **Charlotte Roskill Catering Ltd.**

**Tel: 01874 625060**

[charlotteroskillcatering.com](http://charlotteroskillcatering.com)

Charlotte Roskill does everything but especially good canapés.

# Cooking and dining - chef services

---

## **Local produce that the area is renowned for**

Herefordshire is home to some of the best apple orchards in the country, and so the county is a-plenty with excellent cider breweries. Cider has been produced in this county since the medieval times, when land owners would produce the drink for their labour force as a contribution to their wage. Cider-makers in this region range from the multinational companies such as Bulmers to the tiny micro-breweries out the back of pubs. Be sure to try out Henny's Cider (which was a runner up in Radio 4's Food & Drink programme) and Westons Cider, whose house brew is a favourite in the Houses of Parliament.

Other produce Herefordshire is also famed for is asparagus and strawberries, which are grown in abundance during seasons. The Herefordshire beef is also superb, as are all the locally reared meat around the area. Be sure to check out the information below to find our top recommendation for butchers.

# Cooking & dining - great places to eat & drink

---

## **Nearest pub**

**Ye Olde Tavern, 22 Victoria Rd, Kington, Herefordshire HR5 3BX**  
01544 239 033

## **Pubs**

**The Stagg Inn, Titley, Kington, County of Herefordshire HR5 3RL**  
01544 230 221

Award winning Michelin Star gourmet pub, The Stagg Inn has won numerous awards and acclamations for its food and drink.  
[www.thestagg.co.uk](http://www.thestagg.co.uk)

**The Bull's Head, Craswall, Hereford, County of Herefordshire HR2 0PN**  
01981 510 616

Beautiful rural dining pub. Booking in advance is recommended.  
[www.bullsheadcraswall.co.uk](http://www.bullsheadcraswall.co.uk)

**The Old Black Lion, Lion St, Hay-on-Wye, Herefordshire HR3 5AD**  
0844 288 0711

Acclaimed gastropub in a rustic, beamed inn serving an eclectic menu making use of local produce.  
[www.oldblacklion.co.uk](http://www.oldblacklion.co.uk)

**Royal Oak Steakhouse & Pub, Ross Rd, Much Marcle, Herefordshire HR8 2ND**  
01531 660 300  
[www.royal-oak-inn.com](http://www.royal-oak-inn.com)

**Three Choirs Vineyards, Newent, Gloucestershire GL18 1LS**  
01531 890 223

75-acre vineyard and winery, plus a restaurant with valley views.  
[www.three-choirs-vineyards.co.uk](http://www.three-choirs-vineyards.co.uk)

## **Restaurants**

**The Ferney, Ferney Common, Hereford, Nr Wootton HR3 6QN**  
01544 319 001

Home-made food. Booking is advised and required for Sunday lunch.  
[www.theferney.co.uk](http://www.theferney.co.uk)

# Cooking & dining - great places to eat & drink

---

## Castle House Hotel

01432 356 321

[www.castlehse.co.uk/restaurants](http://www.castlehse.co.uk/restaurants)

## Best places to eat out with children

### The Kinnersley Arms, Kinnersley, Hereford HR3 6QA

01544 327 778

Family friendly pub restaurant serving top quality home-made food. Dogs are welcome and children's menu available.

[www.kinnersleyarms.co.uk](http://www.kinnersleyarms.co.uk)



# Cooking & dining - shopping for food

---

## **Best local supermarket:**

The Co-operative Food, Crabtree Rd, Kington, Herefordshire HR5 3UD  
01544 231 504

Marks & Spencer, 30 High Town, Hereford HR1 2AB  
01432 265 405  
[www.marksandspencer.com](http://www.marksandspencer.com)

Sainsbury's, Barton Yard, Hereford HR4 0AG  
01432 352 323  
[www.sainsburys.co.uk](http://www.sainsburys.co.uk)

## **Butchers:**

Jones, 39 High St, Kington HR5 3BJ  
01544 230 470

## **Wine Merchant:**

Mills Whitcombe Wine Merchants, 10 Old Forge Ind Est, Peterchurch, Hereford HR2 0SD  
01981 550 028

## **Major supermarket online orders:**

Sainsbury's  
[www.sainsburys.co.uk](http://www.sainsburys.co.uk)

Tesco  
[www.tesco.com](http://www.tesco.com)

# Things to do - activities and pampering

---

Our top recommendations for activities and pampering are below.

## **Quad Biking**

**Quad Nation**  
0844 745 5007  
[www.quadnation.co.uk](http://www.quadnation.co.uk)

## **Clay Pigeon Shooting**

**Golden Valley Shooting Events, Hereford, HR4 7LF**  
01981 590 826  
Clay pigeon shooting, archery and air rifling  
[www.gvshooting.com](http://www.gvshooting.com)

**The Big Shoot – Clay Shooting, Lugg Green Rd, Kingsland, Herefordshire HR6 9PT**  
0844 745 5008  
[www.thebigshoot.co.uk/en/venue/oVenue-6992\\_oVenAct-5](http://www.thebigshoot.co.uk/en/venue/oVenue-6992_oVenAct-5)

## **Cycling**

**Adventure Cycling Wales, Old School, Bronllys, Talgarth, Powys LD3 0HP**  
07817 552250  
[www.adventurecyclingwales.co.uk](http://www.adventurecyclingwales.co.uk)

## **Adventure Sports**

**Oaker Wood Leisure Ltd, Kingsland, HR6 9PT**  
01568 780 111

With a range of activities including paintballing, quad trekking, high rope courses, clay pigeon shooting, raft building and target shooting.

[www.oakerwoodleisure.co.uk](http://www.oakerwoodleisure.co.uk)

## **Watersports**

**Black Mountain Activities, The Activity Centre, Three Cocks, Brecon, Powys LD3 0SD**  
01497 847 897

Specialising in a range of outdoor pursuits including rock climbing, caving, canoeing, kayaking, gorge walking, white water rafting, clay pigeon shooting, archery, high level ropes, raft building, land carting, abseiling, orienteering, paintballing, mountain biking and even Canoe & Bike Hire.

[www.blackmountain.co.uk](http://www.blackmountain.co.uk)

# Things to do - activities and pampering

---

## **Canoeing**

Paddles and Pedals Canoe Hire, Racquety Lodge, Wyecliff, Hay-on-Wye, Via Hereford HR3 5RS

01497 820 604

[www.canoehire.co.uk](http://www.canoehire.co.uk)

## **Pampering**

For pampering in the comfort of your property, there is a range of treatments available from a local therapist including massage, pedicure, manicure, etc. Please book well in advance.

Please enquire via My Personal Sanctuary ([www.mypersonalsanctuary.co.uk](http://www.mypersonalsanctuary.co.uk)) via telephone number 01625 540 557 or email [enquiries@mypersonalsanctuary.co.uk](mailto:enquiries@mypersonalsanctuary.co.uk).

## **Herefordshire Cider Trail**

Throughout Herefordshire there is a strong tradition of farm cider-making. Farmers produced cider to be drunk by the farm labour force during the following year, especially at the busy times of hay-making and harvest. Farmers used to sell cider to local pubs and cider merchants for re-sale in towns.

For 350 years cider production in Herefordshire has been on a rollercoaster, periodically rising to become an industry of great reputation. Throughout this time Herefordshire has been the major player in cidermaking in Britain and Herefordshire people have led the way. There is no better place to find out about cider:

[www.ciderroute.co.uk/site/index.html](http://www.ciderroute.co.uk/site/index.html)

# Top things to do with children

---

Our top recommendations for outings with children are below.

## **Small Breeds Farm Park and Owl Centre, Kingswood, Kington, Herefordshire HR5 3HF**

01544 231109

Open every day of the year, whatever the weather, whatever the season. With the most comprehensive collection of owls in Europe, alongside an amazing variety of friendly miniature and rare breed animals, it makes for a great day out with the little ones.

[www.owlcentre.com](http://www.owlcentre.com)

## **Broomy Hill Miniature Railway, HR4 0LJ**

Situated adjacent to the Waterworks Museum, a visit to Broomy Hill on one of the "Public Running Days", makes for an enjoyable day for all the family. There is plenty of space for parking and pleasant surroundings to enjoy a picnic.

[www.hsme.co.uk](http://www.hsme.co.uk)

## **Herefordshire Raceway, Lower Hurst, Weobley, Hereford HR4 8QY**

01544 318334

Herefordshire Raceway is a 600 metre outdoor go karting track, located near the village of Weobley, and surrounded by beautiful Herefordshire countryside. It's the perfect place to experience go-karting, whether it's a fun day out, a launching pad to greater things, or as the thrill of a lifetime.

[www.herefordshireraceway.org.uk](http://www.herefordshireraceway.org.uk)

# Top places to visit & shop nearby

---

## Hereford Cathedral

[www.herefordcathedral.org](http://www.herefordcathedral.org)

## Ludlow Castle, Castle Sq, Ludlow, Shropshire SY8 1AY

01584 873 355

[www.ludlowcastle.com](http://www.ludlowcastle.com)

## The town of of Kington, a seven minute drive

## Hereford, a 38 minute drive

About 19 miles south (a 40 minute drive) lies the trading city of Hereford, where cider, leather, and meat and poultry are still exchanged fervently. Throughout its time Hereford has grown in size and now houses a healthy mix of independant and high-street shops. Cider lovers should check out The Cider Museum (Tel: 01432 354207, Postcode: HR4 0EF, web: [www.cidermuseum.co.uk](http://www.cidermuseum.co.uk)) where you can learn more about the history and processes of making Herefordshire's tastiest drink.

# Useful information

---

## **The Old Byre and Granary at a glance:**

### **Bedrooms and Bathrooms**

- Sleeps up to 18
- Three double bedrooms in The Old Byre, plus a family room which can be made up as a double plus two singles or four singles.
- Two double bedrooms in The Granary plus a family room with a double and two singles.

### **Cooking and Dining**

- Open plan kitchen and dining lounges
- BBQ May - September (additional charge of £20)

### **Where We Are**

- The post code is HR5 3JN
- The nearest town is Leominster
- The nearest train station is Leominster
- The nearest airport is Birmingham
- Plenty of parking available

### **Shared Site**

- Please note that the site of The Old Byre is shared with the site of The Old Mill

### **Things to Do Inside**

- Cinema room
- Games room
- iPad
- Wi-fi

### **Things to Do Outside**

- Private walled garden
- Hot Tub

### **Activities**

- Canoeing
- Herefordshire Cider Trail
- White water rafting
- Cycling
- Shooting
- Pampering and beauty treatments at the house

# Useful information

---

## Top Things to Do for Children

- Small Breeds Farm Park and Owl Centre
- Broomy Hill Miniature Railway
- Herefordshire Raceway

## Payment Process

- We take a one third deposit at the time of booking
- The balance is due three months before the date booked

## Cautionary Deposit

- £500 refundable deposit

## Arrival and Departure

- Check in 4pm
- Check out 10am on a Sunday
- Check out 10am on other days

## House Restrictions

- Up to two well behaved dogs allowed
- Not suitable for stag parties or hen parties

## What's Included

- Linen
- Towels
- Hand wash and shower gel
- Essentials
- Utilities

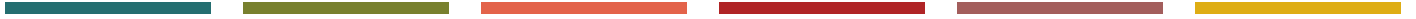
## Hot Tub Usage

We hope you'll enjoy using the hot tub. We want to make sure it is as safe as possible for everyone, so we ask all guests to ensure that the following guidelines are respected. These guidelines are designed to meet basic health and safety regulations, so ensure that all members of your party have read the rules regarding the use of the hot tub.

1. Swimming costumes are obligatory and you may need to bring your own towels
2. You must shower before entering the hot tub to remove any skin oils, make-up, hair products etc. This is vital to ensure a clean and healthy hot tub. If this rule is abused the hot tub may need to be closed for several days so that the water can be thoroughly refreshed. In the event of closure, no refund will be made and cleaning costs will be charged to your party.
3. Outdoor shoes and coats must be taken off around the hot tub area.
4. No alcohol or smoking is allowed in the hot tub.
5. Do not bring any form of glass into the hot tub area.
6. Do not bring in any electrical equipment into the hot tub area where you could be in contact with water.
7. Before using the hot tub, please take out the chlorine dispenser. Put it back in when everyone has left the hot tub.
8. Do not over-occupy the hot tub as this will lead to water spillage and will cause the hot tub to stop working. This is because the filter needs to be covered with water to work.
9. Children must be supervised in and around the hot tub and must not use it without an adult present. Some children can overheat; please seek medical advice if this occurs.
10. Please keep noise levels to an acceptable level. The hot tub is a place of peace and relaxation – be mindful that there are neighbouring properties.
11. It is safer and more enjoyable to use the hot tub with another person. We advise against using the hot tub alone without a member of your group knowing of your whereabouts.
12. On leaving the hot tub, please switch off all jets and lights and make sure that the hot tub is sealed with the cover provided.
13. Please note that you must not use the hot tub if you are suffering from an infectious disease or you have an open wound or sore that cannot be covered by a waterproof plaster.
14. You must not use the hot tub within 48 hours of suffering any stomach illness.
15. Certain medical conditions can be affected by the hot tub, particularly those involving extremes of temperature. You are advised to consult your doctor if you are pregnant or suffer from any of the following: heart disease; circulatory problems; high or low blood pressure; diabetes; or any other condition that affects your body's ability to react to heat.
16. Prevent taking any medication which may affect your circulation or your ability to react to heat.



# Guest reviews



"A beautiful location and place to stay for a family celebration" - *Simon*