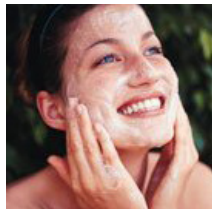
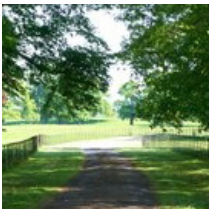


kate & tom's

Extraordinary holidays, celebrations & adventures



**Enjoying your stay at
The Old Moat House**

Everything you need to get the most out of your stay

Contents

Arrival	3
<i>Where We Are</i>	3
<i>Check in and check out</i>	3
Cooking & dining - chef services.	5
Cooking & dining - great places to eat & drink	7
Cooking & Dining - Shopping for Food	10
Things to do - activities and pampering	11
Top things to do with children.	13
Top places to visit & shop nearby	14
Useful information	15
Guest Reviews	18

Arrival

Where We Are

Property Name: The Old Moat House
Address: Great Tangley Manor,
Wonersh Common,
Wonersh
County: Surrey
Postcode: GU5 0PT

Check in and check out

Check in time: 4pm

Contact name for check in: Nicho
Contact number for check in: 0207 526 4852

Check out time for 2 night weekend booking: 10am Sunday
Check out time for 3 night weekend booking: 10am Monday
Check out time for 7 night week bookings: 10am Friday

The best postcode to use with Satnav is: GU5 0PT

Nearest Train station and distance: Chilworth, 1.7 miles away / 6 minute drive

The nearest airport is: Gatwick

Getting to Us

The best postcode to use with Satnav is: GU5 0PT

Nearest Train station and distance: Chilworth, 1.7 miles away / 6 minute drive

Taxis available: Guildford Taxi – 01483 905 789
Fives & 6's Taxis – 01483 565656

Directions:

Central London 35 minutes by train to Waterloo from Guildford British Rail Station

Gatwick 45 minutes by train

Guildford 3 miles by bus

4 miles to A3 giving easy access to M25

Heathrow/Gatwick 30 miles

Farnborough Helipad 18 miles

Cooking & dining - chef services

You'll find our top recommendations below. If you do discover any other gems please do let us know and we will share them with other guests visiting the property.

Below is a selection of the owners' local approved caterers. They have been carefully chosen to provide offerings to suit every occasion and budget.

Please let us know if you would like any recommendations for your particular event.

They are happy for you to use your own caterers, for which they charge a £100 inventory fee. Please let us know your caterers contact details if you would like to take this option.

So Tasty

Chris

01252 723 875

www.sotastyltd.co.uk

Kalm Kitchen

Jen Middlehurst

01483 813 360

www.kalmkitchen.co.uk

Tandem Catering

Carole Wildman

01483 427 329

www.tandemcatering.co.uk

Sophie Martin Catering

Sophie Martin

01428 658 424

www.sophiemartincatering.co.uk

Scrumptious

Sophie Jebb

01428 685 367

www.scrumptious-catering.co.uk

Celebration cakes and bakery

Simon

www.celebrationcakescranleigh.co.uk

Cooking & dining - chef services

Keeley's Kitchen

Joe Keeley

01428 725 797

www.keeleyskitchen.co.uk

At Home Catering

Camilla Mair

Tel: 01342 843727

www.athomeholidays.co.uk

Cooking & dining - great places to eat & drink

Nearest pub

The Parrot Inn, Broadford Road, Shalford, Guildford, Surrey GU4 8DW (1.6 miles away / 5 minute drive)
01483 561 400

The inn offers a warm and friendly atmosphere, courteous staff, clean surroundings and a menu specially compiled to tempt most palates. Traditional roasts served every Sunday lunchtime and families are always welcome. They offer a "specials menu" on a weekly basis.

www.parrotinn.co.uk

Pubs

The Percy Arms, 75 Dorking Road, Chilworth, Guildford, Surrey GU4 8NP (1.7 miles away/5 minute drive)
01483 561 765

Set in the picturesque village of Chilworth in the heart of the Surrey hills, The Percy Arms is an elegant country pub and grill house with luxurious rooms, serving modern British cuisine with a South African twist.

www.thepercyarms.net

The Seahorse Inn, 52-54 The Street, Shalford, Guildford GU4 8BU (1.8 miles away/5 minute drive)
01483 514 351

This pub can be found on the edge of the beautiful Shalford Park and is filled with cosy corners, comfy armchairs, open log fires and boasts a unique dining room. Chef's freshly prepared menu and carefully selected wines, ales and lagers are served daily from lunch right through until dinner.

www.theseahorseguildford.co.uk/home

The Red Lion, Shamley Green, The Green, Shamley Green, Surrey GU5 0UB (2.4 miles away/6 minute drive)
01483 892 202

The Red Lion is a beautiful, traditional village pub, set in a picturesque village in the heart of the Surrey Hills. With beautiful dining rooms and stunning gardens your visit is sure to be memorable. Their menu caters for all tastes from traditional pub favourites to unique special dishes.

www.redlionshamleygreen.com/home.html

Cooking & dining - great places to eat & drink

The Stag On The River, Lower Eashing, Godalming, Surrey GU7 2QG (7.7 miles away/16 minute drive)
01483 421 568

Newly refurbished, The Stag is a great pub for all seasons, with a lovely patio and garden and beautifully decorated full of character and charm.

www.stagontherivereashing.co.uk

Restaurants

Kinghams Restaurant, Gomshall Lane, Shere, Guildford GU5 9HE (5.4 miles away/14 minute drive)
01483 202168

The restaurant dates from the 17th Century and features a wealth of character and charm. Chef Proprietor Paul Baker and his team combine friendly service with imaginative cooking and artistic style. Fresh produce, sourced through local suppliers, complements our extensive selection of fine wines.

www.kinghams-restaurant.co.uk

Drakes on the Pond, Dorking Road, Abinger Hammer, Surrey RH5 6SA (6.6 miles away/17 minute drive)
01306 731174

Over the past seven years, owners John Morris and Tracey Honeysett have built a solid reputation for their Surrey farmhouse style property. There's countryside views from the lemon yellow coloured dining room that's punctuated by blue wine glasses against white linen. There's a strong French influence to the imaginative cooking here, but there's plenty of exotic spice too.

The Thai Terrace, 7th Floor, Castle Car Park, Sydenham Road, Guildford, Surrey GU1 3RW (3.5 miles away/11 minute drive)
01483 503 350

With views over the whole of Guildford and the North Downs through floor to ceiling windows, it is an enchanting restaurant to dine in, with some beautiful shrubbery, a stunning water feature and plenty of tables. The menu is extensive, and specialises in variations of contemporary Thai cuisine with stylish presentation.

www.thethaiterrace.com

La Luna Restaurant, 10 - 14 Wharf Street, Godalming, Surrey GU7 1NN (4.3 miles away/13 minute drive)
01483 414 155

The critically acclaimed La Luna Modern Italian Restaurant is situated in the heart of Godalming and is widely recognised as one of the best restaurants in the Guildford area. A real gem in Godalming's crown – stylish, contemporary furnishings complement innovative food, and the staff are cheery and efficient – deservedly proud of the food and wines they serve.

www.lalunarestaurant.co.uk

Cooking & dining - great places to eat & drink

Cardamon, 10 High Street, Cranleigh GU6 8AE (6.3 minute drive/14 minute drive)
01483 277 145

Cardamon combines the finest traditional Indian cuisine with a contemporary, but sympathetic environment. Choose from their extensive menu of carefully prepared, authentic Bangladeshi and Indian cuisine – including exclusive dishes and hand-made desserts.

Best Takeaways

Wing Hung, 29 Kings Road, Shalford, Guildford GU4 8JX – Chinese takeaway
01483 567 111

Jade Inn, 6 High Street, Guildford GU5 0HB – Chinese takeaway
01483 893 888

Ye Olde Sandwich Shoppe, Middle Street, Guildford GU5 9HF
01483 202 997

Elaichi, 2 The Parade, Frimley High Street, Camberley GU16 7HY – Indian and Bengali cuisine
01276 252 89
www.elaichi-frimley.com

Cooking & Dining - Shopping for Food

Best local supermarket:

Sainsbury's Supermarket, 148-150 High Street, Guildford, Surrey GU1 3HJ (3.5 miles away/11 minute drive)
01483 575 357

Butcher:

Wakeling C H Ltd, 41 Farncombe Street, Godalming, Surrey GU7 3LH (3.6 miles away/11 minute drive)
01483 417 557
www.wakelings.co.uk

Wine Merchant

Taurus Wines, Whitley Manor, Palmers Cross, Bramley, Guildford, Surrey GU5 0LL (4.8 miles away/12 minute drive)
01483 548 484
www.tauruswines.co.uk/eshop/index.php

Major supermarket online orders

Ocado
www.ocado.com

Sainsbury's
www.sainsburys.co.uk

Waitrose
www.waitrose.com

Things to do - activities and pampering

Our top recommendations for activities and pampering are below.

Cycling

Surrey was made for cycling, with challenging off-road mountain biking routes to gentle country lanes, there is something for everybody. The Surrey Hills provide wonderful landscapes to entice families and committed bikers alike.

www.guildford.gov.uk/visitguildford

Adventure Sports

Delta Force Paintball Centre, The Courtyard, Tithebarns Farm, Tithebarns Lane, Send, Surrey GU23 7LE (8.9 miles away / 20 minute drive)

0844 477 5119

For the “older kids” who are looking for a little more adventure and excitement, why not head down the road to the Delta Force Paintball Centre. Delta Force Paintball is perhaps the best recognised name in the sport of paintball today. With over half a million paintball players through our doors last year alone no organisation is more experienced or better placed to host your ultimate paintball day-out.

www.paintballgames.co.uk

Watersports

Bray Lake Watersports, Windsor Road, Maidenhead, Berkshire SL6 2EB (34.3 miles away/58 minute drive)

01628 638 860

Bray Lake Watersports one of the UK’s largest water sports clubs in the country. With over 30 years of experience, they offer a variety of tuition packages to suit just about anyone who wants to learn to windsurf, dinghy sail, kayak, canoe or stand up paddle-boarding. They also have a fully stocked watersports shop with new, used and second hand equipment always available whatever your equipment requirements.

www.braylake.com

Boat trips

Boat trips through scenic Surrey countryside on the River Wey. Take your kids out onto the water, and hire a boat or get rowing along the River Wey. See how many little critters you can spot, be on the lookout for otters and water voles as well as the ducks and swans.

www.guildfordboats.co.uk

Things to do - activities and pampering

Fishing

The Wey is a well-managed river system and the efforts of environmental agencies and sensible control by the officially sanctioned fishing clubs has resulted in healthy stocks of all manner of fish along its length. Wherever you see minnows in any quantity you have an assurance that the water is in good condition, and the Wey has these in abundance if you know where to look. The most popular spots on the river seem to be the Town Stretch, Triggs Lock and Bowers so finding somewhere peaceful to fish won't be a problem. The river is open to members and day ticket anglers.

www.guildfordanglingssociety.co.uk/fish-riverwey.html

www.weyriver.co.uk/theriver/wildlife_5_fish.htm

www.godalminganglingssociety.co.uk/water/river-wey10

Racing

Mercedes-Benz World, Brooklands Drive, Weybridge, Surrey KT13 0SL (16.5 miles away/32 minute drive)
0870 400 4000

Whether you're planning a family day out or a solo visit, there's something for everyone at Mercedes-Benz World. Visitor attractions include exhibitions and displays that give you an amazing insight into the heritage, innovation and engineering behind Mercedes-Benz. If you're feeling adventurous, our hands-on Driving Experiences – for adults and kids – as well as Hot Laps, Passenger Rides and precision driving displays by the Silver Arrows Display Team.

www.mercedes-benz.co.uk

Pampering

For pampering in the comfort of your property, there is a range of treatments available from a local therapist including massage, pedicure, manicure, etc. Please book well in advance.

Please enquire via My Personal Sanctuary (www.mypersonalsanctuary.co.uk) via telephone number 01625 540 557 or email enquiries@mypersonalsanctuary.co.uk.

Top things to do with children

Our top recommendations for outings with children are below.

Chessington World of Adventures Resort, Leatherhead Road, Chessington, Surrey KT9 2NE (19.9 miles away/37 minute drive)

0871 663 4477

Chessington Theme Park is divided into ten themed lands, each with a different theme and setting, specifically with each land designed to resemble a place in the world. As a 2014, Chessington Zoo has over 1,000 animals. There is also a Children's Zoo, where children may feed domestic farm animals. Chessington Sea Life Centre has a number of exhibits and fascinating sea creatures.

www.chessington.com

Thorpe Park, Staines Rd, Chertsey, Surrey KT16 8PN (21 miles away/42 minute drive)

0871 663 1673

Attention thrill hunters! For heart-stopping thrills, mind-bending chills and intense forces with a capital G, Thorpe Park is the ultimate theme park destination and day out. Our thrilling rollercoaster rides are among the highest and fastest in the world. Thorpe Park has extreme rides to satisfy thrill seekers everywhere.

www.thorpepark.com

LEGOLAND, Winkfield Road, Windsor SL4 4AY (31 miles away/51 minute drive)

0871 222 2001

With over 55 interactive rides, live shows, building workshops, driving schools and attractions, all set in 150 acres of beautiful parkland, LEGOLAND Windsor Resort is a unique family theme park. Young and old alike will be fascinated by the incredible LEGO models throughout the park – it's amazing what can be built with nearly 55 million LEGO bricks!

www.legoland.co.uk

Top places to visit & shop nearby

Guildford (4.3 miles away/16 minute drive)

Spend an afternoon exploring the traditional market town of Guildford, the fresh local food stalls and towering cathedral just add to the charm and character of this Surrey town. Soak up the history at the Guildford Castle, re-enact battles from yesteryear and pack a picnic hamper and make the most of British History in the heart of the Surrey Hills.

www.guildford-cathedral.org

www.guildford.gov.uk/castle

Surrey Hills

The Surrey Hills Area of Outstanding Natural Beauty offers some of South East England's most beautiful and accessible countryside. Discover one of England's finest landscapes for yourself.

From tangy blue cheese to award winning wine, hand-blown glass to restaurants with amazing foods, the area boasts a wide range of independent companies and artisans committed to showcasing the best of Surrey for you to enjoy during your stay at The Old Moat House.

Horse Racing

There are many famous racecourses nearby for avid horse racing fans:

Sandown Park, Portsmouth Road, Esher, Surrey KT10 9AJ (18.3 miles away/34 minute drive)

www.sandown.co.uk/racing-and-hospitality

Epsom Downs, Surrey KT18 5LQ (20.3 miles away/45 minute drive)

www.epsomdowns.co.uk

Ascot, High Street, Ascot, Berkshire SL5 7JX (26.8 miles away/43 minute drive)

www.ascot.co.uk

Wimbledon, Church Road, Wimbledon, London SW19 5AE (27.9 miles away/49 minute drive)

The home of British tennis and host of the most prestigious competition in the world of Tennis, Wimbledon is a fantastic venue for a great day out for all tennis fans.

www.wimbledon.com/index.html

Useful information

The Old Moat House at a Glance:

Bedrooms and bathrooms

- Sleeps up to 12 guests
- Five bedrooms, one of which has an en suite bathroom
- Two bedrooms have zip and link beds that can be set up as doubles or twins
- Two folding beds are available for additional guests
- Two shared bathrooms
- Downstairs WC
- Two bedrooms and a bathroom are on the ground floor

Cooking and Dining

- Dining table seats 16 comfortably
- Conservatory seating area seats a further 8 guests
- Fantastic chef available for a special meal or throughout the weekend
- Drop-off meals available
- Well-equipped kitchen with range cooker
- Dishwasher
- American-style fridge-freezer
- Wine fridge
- BBQ
- Good dining nearby
- Online deliveries

Children Welcome

- High chair available
- Cot available

Where We Are

- The postcode is GU5 0PT
- The nearest towns are Guildford and Godalming, both about 4.5 miles from the house
- The nearest station is Chilworth, twenty minutes' drive away
- The nearest airport is London Gatwick.
- Taxis available
- Parking for up to 15 cars

Things to Do Inside

- Large plasma TV
- Sky HD TV
- Wi-fi
- Desktop computer
- Board games
- iPod dock

Useful information

- DVD player
- Well-stocked library
- Bar room
- Remote-controlled interior mood lighting
- Forty foot indoor heated swimming pool available 9am-5pm

Things to Do Outside

- Five acres of Victorian gardens
- Private lake
- Courtyard
- Terrace
- BBQ
- Tennis court available by arrangement

Activities

- Clay pigeon shooting
- Archery
- Bike hire
- Climbing
- Paintballing
- Pampering and beauty treatments at the house

Top Things to Do for Children

- Surrey Hills Llamas
- Craggy Island Indoor Climbing Centre
- Christ's College Ski Club

Payment process

- We take a one third deposit at the time of booking
- The balance is due three months before the date booked

Cautionary deposit

- £1,500 refundable deposit

House restrictions

- No pets please
- No smoking please

Arrival and Departure

- Check in 4pm
- Check out 10am

What's included

- Linen
- Towels
- Toiletries

Useful information

- Tea and coffee facilities
- Utilities
- Extra housekeeping available on request

Guest Reviews

“We stayed at The Old Moat House for my Husband’s 60th Birthday. It was absolutely gorgeous, the perfect place to stay. The house is amazing and had everything there that we could have wanted.” – **Patricia**

“It was the perfect venue for a corporate retreat. Near to London, total privacy, comfortable and well-appointed common areas for group meetings, lovely bedrooms, and beautiful grounds. It was exactly what we were after and I would recommend it highly.” – **Jennifer**

“We had a fantastic weekend at The Old Moat House and it was a great venue for relaxing with a group of friends. The house had so much character and there was plenty of room for the 12 of us (6 adults and 6 children).” – **Laura**