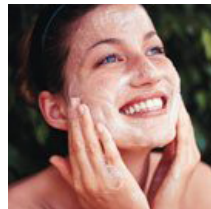
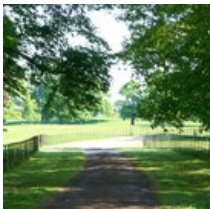


kate & tom's

Extraordinary holidays, celebrations & adventures



Enjoying your stay at The Pool House

Everything you need to get the most out of your stay

Contents

Arrival	3
<i>Where We Are</i>	3
<i>Check in and check out</i>	3
Cooking & dining - chef services.	5
Cooking & dining - great places to eat & drink	6
Cooking & dining - shopping for food	8
Things to do - activities & pampering	9
Top things to do with children.	11
Top places to visit & shop nearby	13
Useful information	14

Arrival

Where We Are

Property Name: The Pool House
Address: Hanley Rd
Upton upon Severn
Worcester
Postcode: WR8 0PA

Check in and check out

Check in time: 4pm
Check out time for 2 night weekend booking: 4pm Sunday
Check out time for 3 night weekend booking: 10am Monday
Check out time for 7 night week bookings: 10am Friday

Arrival

Getting To Us

The best postcode to use with satnav is:

WR8 0PA

Nearest train station and distance:

Malvern Link

The nearest airport is:

Birmingham

Reliable taxi service:

Ledbury Taxi service

Cardiff Cottages

Ledbury

HR8 1NE

01531 633596

Cooking & dining - chef services

Four Leaf Clover

Four Leaf Clover Catering

info@four-leaf.co.uk

01789 773000

www.four-leaf.co.uk

An excellent, long-established catering service who can prepare superb food for bigger events such as weddings and corporate events. They will work with you to tailor the menu to suit your desires and diet.

Pig on the Hill

Pig on the Hill Catering

lee@pigonthehill.net

07789 965 373

www.pigonthehill.net

Specializes in more laid-back affairs like BBQs, hog roasts and parties. All their meat is sourced in Bredon Hill, just a stone's throw away, and it's delicious.

Cooking & dining - great places to eat & drink

Nearest pub

The Plough Inn

Waterside, Upton upon Severn, Worcester WR8 0HG
01684 591198

The Plough Inn is a fantastic pub located on the riverside next to the bridge. They have a large, homely bar perfect for sampling a real ale. During the summer, why not sit the large beer garden, whilst enjoying a relaxed evening, with the stunning view.

Best pubs

The Swan

Hanley Swan, Nr Malvern, WR8 OEA
www.thehanleyswaninn.com

A fantastic gastro pub, in an excellent location, for enjoying a drink with a beautiful view. The food here is well worth trying.

Ye Olde Anchor

5 High St, Upton upon Severn, Worcester WR8 0HQ
01684 593735
www.anchorupton.co.uk

Traditional and friendly pub, with an excellent drinks menu, with some fantastic, ciders, ales and wines. They host a variety of evening events which are well worth checking out.

The Kings Head

58 Old St, Upton upon Severn, Worcestershire WR8 0HJ
01684 592621
www.kingsheadupton.co.uk/#new-page

This friendly, lively pub, is extremely warm and inviting. Offering a great selection of ales and wines. The food menu is worth checking out too!

The Drum and Monkey

Newbridge Green, Upton upon Severn, Worcester WR8 0QP
01684 592758
www.the-drum-and-monkey.co.uk/

This delightful 17th century inn has a great range of traditional ales and a nice food menu. During the winter there are lovely logs fires to sit by and a glorious courtyard terrace to take advantage of in the summer sunshine.

Defford arms

Upton Road, Defford Village, Pershore, Worcestershire WR8 9BD
01386 750378
www.deffordarms.co.uk

This rustic looking pub, is homely and friendly. They offer a wide selection of ales and are also well known for making their guests feel so welcome.

Cooking & dining - great places to eat & drink

Best restaurants

Three Choirs Inn

Newent, Gloucestershire GL18 1LS
01531 890223
www.three-choirs-vineyards.co.uk

Nestled in 30 hectares of vineyard, this incredible restaurant offers delicious food, accompanied by incredible wine.

Butchers Arms

Lime St, Gloucester GL1 9 4NX
01452 840381
www.thebutchersarms.net

This Michelin Starred gastropub, offers a fantastic atmosphere as well as excellent dining. The menu is a selection of British classics with modern twists. A must visit!

The Inn At Welland

Drake Street, Welland, Malvern, Worcestershire, WR13 6LN
01684592317
www.theinnatwelland.co.uk

This open planned and stylish pub, is a mix of rustic charm and deigner touches. Expect pub classics and sandwiches, alongside generously sized modern British dishes, as featured in the michelin guide.

Outlook

The Cottage in the Wood, Holywell Road, Malvern Wells, Worcestershire, WR14 4LG
01684 588860
www.cottageinthewood.co.uk

The stunning views aren't the only feature at Outlook, this award winning restaurant has a comprehensive menu designed around its local suppliers.

Old Rectifying House

North Parade, Worcester, WR1 3NN
01905 619622
www.theoldrec.co.uk

As featured in the michelin guide, this friendly restaurant provided fine dining in a laid back environment. The food here is excellent with emphasis on seasonal and locally sourced produce.

Venture Inn

Main St, Ombersley WR9 0EW
01905 620552
www.theventurein.co.uk

A fantastic restaurant with a beautiful simplistic, yet innovative menu. All meat and fish are carefully sourced and are all smoked expertly in house.

Child-friendly restaurants

Burgerworks

12 Friar Street, Worcester WR1 2LZ
01905 27770
www.burgerworks.uk

Using the best Herefordshire beef, Burgerworks is a great place to take fussy eaters. You can add or take away toppings as you like, but make you sure you leave room for some delicious desserts.

Zizzi Restaurant

106 High Street, Worcester WR1 2HW

Pizza Express

3 College Street, Worcester WR1 2LU

Cooking & dining - shopping for food

Supermarkets

Tesco Superstore

Address: St Peter's Dr, Worcester WR5 3SW
0345 677 9738
www.tesco.co.uk

Sainsbury's

Swanpool Walk, Worcester WR2 4EL
01905 683800
www.sainsburys.co.uk

Wine merchants

Upton-Upon-Severn Wines Ltd

8 New St, Upton-upon-Severn, Worcester, WR8 0HR
www.uptonwines.co.uk

Stocks wine to suit all occasions. They cater to dinner parties, too, and can offer advice on which wines to pick, plus they can deliver to the house. Contact them for further details.

Delicatessens

Four Oaks Fine Foods

70 The Homend, Ledbury, Herefordshire HR8 1BX
01531 631979
www.four-oaks.co.uk

Has a good range of French, Spanish, Italian and British luxury foods. Hams, game, poultry and fish are all available, plus they can put you in touch with some excellent local caterers.

Bakery

Cooks Bakery

10 Old St, Upton upon Severn, Worcester WR8 0HA
01684 592165

Cooks Bakery Shop is a traditional, locally run bakery, with a vast selections of breads, cakes, pastries as well as savory options, that are all freshly prepared and baked in store.

Butchers

R.A Phipps

Worcester Rd, Hanley Swan, Worcester WR8 0EA
01684 310227

This fantastic butchers offers a huge range of freshly cut and locally sourced produce.

Top things to do - activities and pampering

Visit Spetchley Gardens

Spetchley Park Gardens

Spetchley, Worcestershire, WR5 1RS
01905 345 106
www.spetchleygardens.co.uk

This beautiful historic garden, surrounded by ancient parkland, deer park and lakes, is set in the heart of Worcestershire's countryside. With 30 acres of gardens and a charming tea room it's the perfect family day out.

Exploring the Malvern Hills

The Malvern Bike Hire Company

54 Guarlford Road, Malvern WR14 3QP - 12 miles
01684 572445
www.malvernbikehire.co.uk

A designated Area of Outstanding Natural Beauty, the Malvern Hills dominate the landscape and provide endless adventures. The whole ridge can be completed in a day, and are moderate enough for little legs. Cycle hire can be obtained from The Malvern Bike Hire Company, who stock well-maintained hybrid cycles.

Adventure activities

March Hare Leisure Centre

Broughton Hackett WR7 4BE
01905 381222
www.marchhareinn.co.uk

Just a short trip down the road. Lots of activities to choose from: offering go karting, paintball, clay pigeon shooting and archery. The team here will tailor the day around you, so you can choose to do one or all of the activities.

Golf

The Vale Golf Club

Hill Furze Road, Bishampton WR10 2LZ - 10 miles
01386 462781
www.thevalegolf.co.uk

One of Worcestershire's finest clubs. A superb, undulating 18-hole course which provides some tricky holes. The views are superb, the Clubhouse always welcoming.

Explore Eastnor Castle

Eastnor Castle

Eastnor Castle, Ledbury, HR8 1RI
01531633160
www.eastnorcastle.com

Eastnor Castle is a 19th-century revival castle, by the village of Eastnor. Currently in residence is the family of James Hervey-Bathurst. The castle is a Grade I listed building. The grounds are the location of the Land Rover vehicle test track, allowing visitors the chance to try off-roading in the company's latest models.

Horse Riding

Guinness Park Farm

Leigh Sinton, Malvern WR13 5EQ
01886 833384
www.guinnessparkfarm.co.uk

The gorgeous Worcestershire countryside is perhaps best explored on hooves. Guinness Park Farm offer lessons and hacks in the surrounding woodland. Beginners are welcome, and will receive expert tuition.

Quad Biking

Peachley Quad Trekking

Peachley Ln, Lower Broadheath WR2 6QR
01905 641309
www.peachleyquadtrekking.co.uk

Suitable for ages 6 and over. Great outfit of professionals who will guide you through 350 acres of pasture and woodland. There's also a picnic area and cafeteria on site.

Fishing

Eastfield Fisheries

Eastfield Farm, Kempsey WR5 3QH
07793 782471
www.eastfieldfisheries.co.uk

2 lakes to choose from, each 1 acre in size, with a lodge where you can buy refreshments.

Pampering

My Personal Sanctuary

01625 540557
email: email.enquiries@mypersonalsanctuary.co.uk
www.mypersonalsanctuary.co.uk

For pampering in the comfort of your property, there is a range of treatments available from a local therapist including massage, pedicure, manicure, etc. Please book well in advance.

Go Ape!

Go Ape! at Wyre Forest

Callow Hill, Kidderminster DY14 9XQ
0333 331 7812
www.goape.co.uk

Situated in 6000 acres of ancient woodland, the Wyre Forest is one of largest remaining ancient woodlands in the UK, and so provides the perfect setting for an adrenaline-fuelled day out. Full of hire-wires, wobbly crossings and heart-stopping zip-lines, Go Ape! is an ideal day out for families, corporate teams and stag and hen parties. We advise to book sooner rather than later in the busy spring and summer months to avoid disappointment.

Paint your own pottery

Green Frog Pottery

107 Barnard's Green Rd, Malvern WR14 3LT
01684 561778
www.greenfrogpottery.co.uk

Unleash the Picasso within: Green Frog is a treasure trove of creativity, perfect to visit when the weather's not great. Lots of ceramics to choose from: plates, animals, mugs - over 100 in fact.

Ride a miniature steam train

Evesham Vale Light Railway

Twyford WR11 4TB
01684 561778
www.evlr.co.uk

This delightful steam train travels on a one mile long track and goes through some beautiful rolling countryside.

Explore the Drakelow tunnels

Kingsford Country Park

Wolverley, Kidderminster DY11 5TA
www.drakelow-tunnels.co.uk

Originally built as an underground WWII factory, and then prepared as a fall-back government centre during the Cold War, the Drakelow tunnels are absolutely huge, covering about 3.5 miles in length. There's opportunities to take tours around the old factory and nuclear bunkers. Be aware this might not be suitable for small children, as parts can be quite eerie.

Go on a safari adventure

West Midland Safari Park

Spring Grove, Bewdley DY12 1LF
01299 402114
www.wmsp.co.uk

This beautiful historic garden, surrounded by ancient parkland, deer park and lakes, is set in the heart of Worcestershire's countryside. With 30 acres of gardens and a charming tea room it's the perfect family day out. An award-winning family attraction, West Midland Safari Park has a 4 mile self-drive safari experience.

Top places to visit & shop nearby

Worcester

Worcester is an ancient cathedral city steeped in exciting history, it being the site of the last battle of the English Civil War. Worcester Cathedral is well worth a visit, where you can climb the tower and look out over the city, exactly on the same spot where Charles II watched his troops being devastated during the Battle of Worcester. John, King of England, is also buried here.

Around town, there's The Commandery, a museum dedicated to the Wars, and the Museum of Royal Worcester which houses the largest display of Worcester porcelain in the world and offers family craft events and workshops.

If a large dose of retail therapy is what you need, however, then Worcester has a number of independent shops and a good array of high-street stores.

Great Malvern

A picturesque spa town nestled at the foot of the Malvern Hills, Great Malvern is the perfect place to spend an afternoon. Mac & Jac's café is the place to restock the calories after a morning up in the hills, while the Malvern Flea Market makes for an interesting rummage through some old antiques and vintage items.

For culture, the Malvern Theatre showcases excellent plays from around the UK, attracting actors as large as Sir Ian McKellen and Sir Patrick Stewart. Films are shown, too, which range from mainstream Hollywood blockbusters to international and art-house ventures.

Not far away is the birthplace of perhaps England's most celebrated composer - Edward Elgar. There's two buildings: his small, cosy cottage and a newly built centre dedicated to his life and works.

Worcester Cathedral

8 College Yard, Worcester, WR1 2LA
01905 732900
www.worcestercathedral.co.uk

The Commandery

Sidbury, Worcester, WR1 2HU
01905 361821

Museum of Royal Worcester

Severn Street, Worcester, WR1 2ND
0190521247
www.museumofroyalworcester.org

CrownGate Shopping Centre

Angel Street, Worcester, WR1 3LE
www.crowngate-worcester.co.uk

Mac & Jac's Café Malvern

23 Abbey Road, Malvern WR14 3ES
01684 573300

Malvern Theatres

Grange Rd, Malvern WR14 3HB
01684 892277
www.malvern-theatres.co.uk

Elgar Birthplace Museum

Crown East Ln, Lower Broadheath WR2 6RH - 9 miles
01905 333224
www.elgarmuseum.org

Ledbury

Nestled at the foot of the Malvern Hills, Ledbury is a haven for poetry and culture. The area has seduced its fair share of notable Poets. It's not hard to see why. Big enough to be bustling and vibrant, but small enough to keep a strong sense of community, Ledbury is a market town with a unique feel. Ledbury's market hall is one of the finest examples in England and still hosts markets on Tuesdays and Saturdays.

The Market Theatre

Market St, Ledbury, Herefordshire HR8 2AQ 07967 517125

www.themarkettheatre.com

Handley Organics

31 The Homend , Ledbury, Herefordshire, HR8 1BN 01531 633448

www.handleyorganics.co.uk

Useful information

The Pool House at a glance

Bedrooms and Bathrooms

- Sleeps up to 14, with room for a couple more on guest beds
- Six bedrooms, five of which have an ensuite bath or shower room
- One super kingsize bedroom, three kingsize bedrooms, one double bedroom and one double plus single
- Two guest beds available

Cooking and Dining

- Dining table seats 14 comfortably
- Fantastic chef available for a special meal or throughout the weekend
- Drop-off meals available
- Range cooker, double oven and electric hob
- Large brick BBQ with oven and grill (1 bag of charcoal provided)
- Tables and chairs on terrace
- Good dining nearby
- Online deliveries nearby

Children Welcome

- Books and DVDs for children
- Board games
- Cot available
- Pond in courtyard and River Severn close to property

Where We Are

- The postcode is WR8 0PA
- The nearest train station is Malvern Link, a 12 minute drive
- The nearest airport is Birmingham
- Taxis available
- Plenty of parking available

Things to Do Inside

- Indoor heated hydrotherapy hot tub
- 50" TV with Freeview
- DVD Player and DVDs
- Wi-fi
- Games room with pool table
- Library
- Piano

Things to Do Outside

- Three acres of gardens and grounds to explore
- Croquet and cricket set
- Trampoline

Useful information

Payment Process

- We take a one third deposit at the time of booking
- The balance is due three months before the date booked

Cautionary Deposit

- £1,000 refundable deposit

House Restrictions

- No pets please
- Hen parties welcome
- Not suitable for stag parties

Arrival and Departure

- Check in 4pm
- Check out 4pm on a Sunday
- Check out 10am on other days

What's included

- Linen
- Towels
- Essentials
- Utilities
- Open fires – starter pack of logs provided

Hot Tub Usage

We hope you'll enjoy using the hot tub. We want to make sure it is as safe as possible for everyone, so we ask all guests to ensure that the following guidelines are respected. These guidelines are designed to meet basic health and safety regulations, so ensure that all members of your party have read the rules regarding the use of the hot tub.

1. Swimming costumes are obligatory and you may need to bring your own towels
2. You must shower before entering the hot tub to remove any skin oils, make-up, hair products etc. This is vital to ensure a clean and healthy hot tub. If this rule is abused the hot tub may need to be closed for several days so that the water can be thoroughly refreshed. In the event of closure, no refund will be made and cleaning costs will be charged to your party.
3. Outdoor shoes and coats must be taken off around the hot tub area.
4. No alcohol or smoking is allowed in the hot tub.
5. Do not bring any form of glass into the hot tub area.
6. Do not bring in any electrical equipment into the hot tub area where you could be in contact with water.
7. Before using the hot tub, please take out the chlorine dispenser. Put it back in when everyone has left the hot tub.
8. Do not over-occupy the hot tub as this will lead to water spillage and will cause the hot tub to stop working. This is because the filter needs to be covered with water to work.
9. Children must be supervised in and around the hot tub and must not use it without an adult present. Some children can overheat; please seek medical advice if this occurs.
10. Please keep noise levels to an acceptable level. The hot tub is a place of peace and relaxation – be mindful that there are neighbouring properties.
11. It is safer and more enjoyable to use the hot tub with another person. We advise against using the hot tub alone without a member of your group knowing of your whereabouts.
12. On leaving the hot tub, please switch off all jets and lights and make sure that the hot tub is sealed with the cover provided.
13. Please note that you must not use the hot tub if you are suffering from an infectious disease or you have an open wound or sore that cannot be covered by a waterproof plaster.
14. You must not use the hot tub within 48 hours of suffering any stomach illness.
15. Certain medical conditions can be affected by the hot tub, particularly those involving extremes of temperature. You are advised to consult your doctor if you are pregnant or suffer from any of the following: heart disease; circulatory problems; high or low blood pressure; diabetes; or any other condition that affects your body's ability to react to heat.
16. Prevent taking any medication which may affect your circulation or your ability to react to heat.