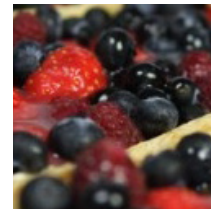
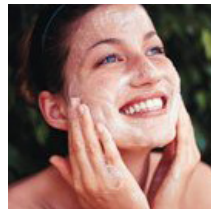
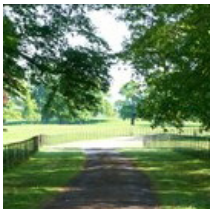


kate & tom's

Extraordinary holidays, celebrations & adventures



**Enjoying your stay at
The Rectory**

Everything you need to get the most out of your stay

Contents

Arrival	3
<i>Where We Are</i>	3
<i>Check in and check out</i>	3
Cooking & dining - chef services.	5
Cooking & dining - great places to eat & drink	6
Cooking & Dining - Shopping for Food	8
Things to do - activities and pampering	9
Top things to do with children.	10
Useful information	11
Guest Reviews	14

Arrival

Where We Are

Property Name: The Rectory
Address: The Old Rectory
Fore Street Hill
Chulmleigh
County: Devon
Postcode: EX18 7BS
Phone number at the house: 01769 580 123

Check in and check out

Check in time: 4pm

Contact name for check-in:
Contact number for check-in: 01769 580123

Check out time for 2 night weekend booking: 10am Sunday
Check out time for 3 night weekend booking: 10am Monday
Check out time for 7 night week bookings: 10am Friday

The best postcode to use with Satnav is: EX18 7BS

Nearest Train station and distance: Eggesford, two miles away

The nearest airport is: Exeter

Getting To Us

The best postcode to use with Satnav is: EX18 7BS

Directions:

Follow M5 to Devon. Take exit 27 from M5

At junction 27, take the A361 exit to Tiverton/Barnstaple

Take A361, B3137 and B3042 to your destination in Chulmleigh

At the roundabout, take the 3rd exit onto A361

At the roundabout, take the 1st exit onto Bolham Rd/A3126

Go through 1 roundabout

At the roundabout, take the 2nd exit onto Kennedy Way/A3126

Go through 1 roundabout

At the roundabout, take the 2nd exit onto Leat St/B3137

Turn left onto Longdrag Hill/B3137

Continue to follow B3137

Sharp left toward B3042

Continue onto B3042

Continue onto B3096

Turn left onto Fore St/B3096

Turn left

Destination will be on the left

Cooking & dining - chef services

You'll find our top recommendations below. If you do discover any other gems please do let us know and we will share them with other guests visiting the property.

Drop-off Service

Dartmoor Kitchen, Clyst St Mary, Devon
01395 239000

Piglet Cottage
01884 346 10 / 07799 108 784

Cooking & dining - great places to eat & drink

Nearest pub

The Red Lion, East St, Chulmleigh EX18 7DD

01769 580 384 / 01769 581 007

www.theredlionchulmleigh.co.uk/site/

Just a three minute walk from the house

Pubs

The Old Court House, EX18 7BW

01769 580 045

Traditional Thatched country inn, serving ales, cider and food

www.oldcourthouseinn.co.uk/

The Fox & Hounds, Devon EX18 7JZ

01769 580 345

www.foxandhoundshotel.co.uk/

The Malt Scoop Inn, Devon EX20 3EA

01805 603 924

www.themaltscoop.co.uk/

Restaurants

Highbullen Hotel Golf & Country Club, EX37 9HD

01769 540 561

www.highbullen.co.uk/dine/devon-view-restaurant/

Stunning views across the rolling Devon hills to Exmoor.

Fatbelly Fred's, Devon, EX31 1HA

01271 345 700

All the lobsters and crab used in the restaurant are caught locally off the coast of North Devon.

www.fatbellyfreds.co.uk/

Cooking & dining - great places to eat & drink

Chulmleigh Tandoori Indian Restaurant & Takeaway, Devon EX18 7BR
01769 580 797

Weirmarsh Farm, EX37 9BE
01769 560338

Family run restaurant and we aim to offer it diners a unique experience, mixing homely surroundings with great home cooked, fresh and local food.
www.weirmarshfarmrestaurant.co.uk/

Eggesford Gardens Restaurant

Wide range of hot and cold foods, locally sourced, prepared on-site
www.eggesfordgardens.com/

Best Takeaways

The Old Dairy - Tearoom and Deli, Devon EX18 7BR
01769 580 598

Cooking & Dining - Shopping for Food

Best local supermarket:

Sainsbury's Superstore, New Rd, South Molton, Devon EX36 4BQ
01769 574 530

Butcher & Produce:

Hawkridge Farmhouse Dairy Produce
01363 884 222
www.hawkridge.uk.com/index.php

British Hen Welfare Trust, Chulmleigh EX18 7EJ
01769 580 310
Hen sanctuary and free range eggs
www.bhwt.org.uk/

Wine Merchant:

Bray Valley Wines, South Molton, Devon EX36 3BS
01769 575 946
www.brayvalleywines.co.uk/

Major supermarket online orders:

Sainsbury's
www.sainsburys.com

Things to do - activities and pampering

Our top recommendations for activities and pampering are below.

Clay Pigeon Shooting

Clay pigeon and game shoots, including Trenchard, Colleton Manor and Clovelly.

Horse riding

Exmoor and Dartmoor National Parks are great places to visit if you want to do some horse riding, as is Chulmleigh itself, which has local stables for horse riding lessons and hiring. There is also a multitude of forestry tracks and bridleways, some through Eggesford Forest.

Golf

An 18-hole short course in Chulmleigh, less than five minutes walk away. Then advance to to the full-size course some ten minutes away at Highbullen Hotel Golf and Country Club. Alternatively, visit the premier Atlantic Links course at Saunton Golf Club and play their East Course which is rated 60 in the world by Golf World Magazine.

Fishing

The Old Rectory has many excellent venues for fishing close by. The Little Dart is a 'late running river' so fish arrive later in the year. The Taw is best for salmon in the spring and is good for sea trout from May onwards. There are also several coarse fishing lakes in the area, including the popular Stafford Moore. The Torridge and the River Mole, Catham Lakes and Huntacott Water are all close by.

Adventure Sports

Light aircraft, gliding and microlight flying sessions at Eaglescott Airfield, only 15 minutes away.

Pampering

07974 385 842 / 01769 580 123

Our mission at Hands on life is to help inspire awareness on all levels of physical and mental health. Helping people achieve a higher level of energy, balance and calm.

Throughout the year hands on life @ the old rectory will be offering a diverse collection of Healthy lifestyle retreats and special workshops run by experienced and inspiring teachers.

www.handsonlife.co.uk

contact@theoldrectorychulmleigh.co.uk

Top things to do with children

Our top recommendations for outings with children are below.

Saunton Sands,

This is a popular beach with surfers and families due to the long stretch of water perfect for swimmers and surfers and it is much more suited to beginners and intermediate surfers than the northern Croyde Bay.
www.northdevon.com/Saunton-Saunton-Sands-Beach/details/?dms=3&venue=4020907

Milky Way Adventure Park, Devon EX39 5RY 01237 431255

Amusement park with roller coasters, indoor adventure play area, wildlife displays and live shows
www.themilkyway.co.uk/

Exmoor National Park, Exmoor House, Dulverton, Somerset TA22 9HL, United Kingdom 01398 323841

A unique landscape of moorland, woodland, valleys and farmland, shaped by people and nature over thousands of years. Where high cliffs plunge into the Bristol Channel, and cosy pubs and tearooms offer delicious local produce.
www.exmoor-nationalpark.gov.uk/

Dartmoor

Purple, heather clad moorland, wide open landscapes, rushing rivers and obscure stone tors shape the landscape of Dartmoor. But that is just one small part of a big picture.
www.visitdartmoor.co.uk/

Useful information

The Rectory at a Glance

The Main House:

- Sleeps up to 16 people
- Eight bedrooms, of which six have ensuite bathrooms
- One shared bathroom
- Downstairs WC

The Studio:

- Sleeps up to 4 people
- Two bedrooms, of which both are ensuite

Dance Barn:

- Sleeps up to 2 people
- One double bedroom
- Shower room

Cobbled Room:

- Sleeps up to 2 people
- One double bedroom with ensuite bathroom

Cooking and Dining

- Dining Table seats 24 comfortably
- Fantastic chef available for a special meal or throughout the weekend
- Drop-off meals available
- Aga, large gas oven and microwave
- Tables and chairs on terrace
- Great dining nearby
- Online deliveries

Where We Are is

- The postcode is EX18 7BS
- The nearest village is Chulmleigh
- The nearest station is Eggesford, two miles away
- The nearest airport is Exeter
- Taxis available
- Parking for ten or more cars

Things to Do Inside

- Large flat screen TV
- Sky TV
- Wi-fi
- DVD player

Useful information

- Games room with snooker table and table tennis table

Things to Do Outside

- Big solar heated salt water swimming pool (available from April to October)
- Hot tub
- Infrared sauna
- All weather Tennis Court
- Fully equipped gym
- Croquet lawn
- Acres of gardens and woodland

Activities

- Country pursuits available nearby, including clay pigeon shooting
- Golf
- Surfing
- Pampering and beauty treatments at the house

Children Welcome

- Games Room
- Swimming pool
- Tennis Court
- Cots available
- High chairs available

Top Things to Do for Children

- Beaches at Saunton Sands and Croyde
- Milky Way Adventure Park
- Exmoor and Dartmoor

Payment process

- We take a one third deposit at the time of booking
- The balance is due three months before the date booked

Cautionary deposit

- £1,000 refundable deposit

House restrictions

- Up to two well behaved dogs welcome, sleeping downstairs in the utility room
- Noise policy in place
- No fireworks please
- Not suitable for stag parties

Arrival and Departure

- Check in 4pm
- Check out 10am – please enquire about a later check out

Useful information

What's included

- Linen
- Towels
- Essentials
- Utilities
- Please bring your own swimming towels
- Extra housekeeping available on request

Guest Reviews

“The Rectory is a beautiful house in a glorious setting overlooking the Little Dart and with the moors in the distance. But it achieves something special: it feels lived in and loved, homely and warm. It is luxurious and grand in parts, quirky and cosy in others. While it has one foot in its very English past, it feels proudly worldly and is more than fit for the needs of the modern-day traveller” – *Jilly*

“You have managed to give us all what we wanted and imaged” - *Katherine and Peter*