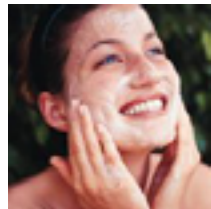


kate & tom's

Extraordinary holidays, celebrations & adventures



Enjoying your stay at The White Town House

Everything you need to get the most out of your stay

Contents

Arrival3
Where We Are3
Check in and check out3
Cooking & dining - chef and catering services5
Cooking & dining - great places to eat & drink6
Cooking & dining - shopping for food8
Top things to do with children9
Useful information11

Arrival

Where We Are

Property Name:	The White Town House
Address:	Elbourne Road
County:	London
Postcode:	SW17 8JJ

Check in and check out

Contact name for check in:	Catherine Woram
Contact number for check in:	07973835923

Check in time:	4pm
Check out time for 2 night weekend booking:	4pm Sunday
Check out time for 3 night weekend booking:	10am Monday
Check out time for 7 night week bookings:	10am Friday

Arrival

Getting To Us

The best postcode to use with satnav is:	SW17 8JJ
Nearest train station and distance:	Tooting Bec Underground, 0.5 miles
The nearest airport is:	London City Airport, 12.5 miles Heathrow Airport, 15 miles
Reliable taxi service:	Greyhound Cars www.greyhoundcars.co.uk 020 8677 1212

Directions to The Manor House

The White Town House is situated on Elmbourne Road, opposite Tooting Bec common.



Cooking & dining - chef and catering services

Measured Events

Measured Events

020 7620 0950

info@measuredevents.com

www.measuredevents.com

Catering Hospitality Staff Cocktail Bartenders. They supply superior event staff and hire equipment across London, offering as much support and event management as you may need. Specialising in both Corporate and private events of any size.

Bread & Honey

Bread & Honey

020 8964 5255

bookings@breadandhoney.net

www.breadandhoneyevents.co.uk

Spearheaded by some of London's finest chefs, this up-and-coming catering company is one of the City's most exciting. Booking well in advance is recommended.

Cooking & dining - great places to eat & drink

Nearest pub

The Kings Head

84 Upper Tooting Rd, London SW17 7PB
020 8767 6708

15 minutes walk away. Good selection of drinks and large TVs to watch sport on.

Best pubs in the area

The Avalon

16 Balham Hill, London SW12 9EB
www.theavalonlondon.com
020 8675 8613

Nice, spacious pub offering good weekend brunches and ever-changing ales and wines.

If you're in central London then be sure to have a drink in some of these outstanding pubs and bars

The Princess Louise

208 High Holborn, London WC1V 7EP
020 7405 8816
www.princesslouisepub.co.uk

One of London's most authentic Victorian gin palaces. Polished wood, intricate tiling and etched glass screens adorn the interiors, and provide a setting for a truly memorable drink.

The Harp

47 Chandos Place, London WC2N 4HS
020 7836 0291
www.harpcoventgarden.com

Escape the throngs of tourists into this little gem just off Trafalgar Square. It's normally quite quiet, so you can enjoy your drinks in peace. The food here is delicious, too, with the sausage baps coming up trumps.

Ape & Bird

142 Shaftesbury Ave, Soho, London WC2H 8HJ
020 7836 3119
www.apeandbird.com

This shabby-chic watering hole is owned by the Venetian masterminds behind the award-winning Polpo restaurants, and so naturally it's a great place to wine and dine. Food is excellent, and the choice of wines and craft beers is expansive.

The French House

49 Dean Street, Soho, London W1D 5BG
020 7437 2477
www.frenchhousesoho.com

Become enveloped in London's artistic scene in this charismatic pub that is reminiscent of a boisterous 1960s French wine bar.

Cooking & dining - great places to eat & drink

Best restaurants

Harrison's Brasserie & Bar

15-19 Bedford Hill, London SW12 9RG

020 8675 6900

www.harrisonsbalham.co.uk

Having worked under Rick Stein and his Seafood Restaurant in Padstow, fervent foodie "Sam" has created this wonderful neighbourhood restaurant which is inspired by the sea and modern British cuisine. 15 minutes' walk away from the house, it's the best place to go for food in the area.

Lamberts

Balham High Road, London SW12 9AZ

020 8675 2233

www.lambertsrestaurant.com

This exciting restaurant, also just down the road, combines all the best fresh, in-season produce to whip up food that's delicious, inventive, and totally British. Expect dishes like rabbit with truffled mayonnaise and spring vegetables, or chargrilled mackerel, gooseberry and fennel.

Cooking & dining - shopping for food

Local supermarket

Sainsbury's

43 Tooting Bec Road SW17 8BS - 0.5 miles

Larger supermarkets

Waitrose

134 - 152 Balham High Road SW12 9BN - 1 miles

Wine merchant

Bottle Apostle

59 Abbeville Road, London SW4 9JW - 1.5 miles

020 3376 1447

www.bottleapostle.com/clapham

If you're looking for good wine, look no further. 450 of some of the best wines money can buy, with focus on Italian and Portuguese regions. Excellent craft beers and ciders can be found here too.

Delicatessens

Lina Stores

18 Brewer Street, London W1F 0SH

020 7437 6482

www.linastores.co.uk

The Mount Street Deli

100 Mount Street, London W1K 2TG

020 7499 6843

www.themountstreetdeli.co.uk

Bakeries and cake shops

Scandinavian Kitchen

61 Great Titchfield Street, London W1W 7PP

020 7998 3199

www.scandikitchen.co.uk

Nordic Bakery

14A Golden Square, London W1F 9JG

020 3230 1077

www.nordicbakery.com

Bad Brownie

www.badbrownie.co.uk

Top things to do with children

London Dungeons

The London Dungeon

Riverside Building, Westminster Bridge Rd SE1 7PB
www.thedungeons.com/london/en
0871 423 2240

The London Dungeons invites you to delve into the capital's most horrible history. Come face to face with live actors, experience three thrilling rides, interactive shows and special effects as you're transported back to those black, bleak times. The kids will love the gruesome stories that lie within.

Play park

Kensington Gardens
London W2 2UH

Children love racing around the Diana, Princess of Wales Memorial Playground in Kensington Gardens. Inspired by the stories of Peter Pan this magical playground has a huge wooden pirate ship as its centerpiece.

Toy shop

Hamleys

188-196 Regent Street, London W1B 5BT
0371 704 1977
www.hamleys.com

Find the finest toys for boys and girls by gender, age or amount to spend in London's most famous toyshop, with seven floors filled with every conceivable toy from all the popular brands. Even the nurseries and playrooms of the Queen and her children have been stocked from this extraordinary shop.

London Zoo

London Zoo

Regent's Park NW1 4RY
020 7449 6200
www.zsl.org/zsl-london-zoo

Lions and tigers and bears oh my! Everything you could wish for is at London Zoo, but the enclosure to head for is the pool at Penguin Beach. Happy feet for your happy kids.

Top places to visit & shop nearby

Central London

Flex your plastic on Bond Street. And when you need a bite to eat, take your pick from some of the best restaurants in the world. Book ahead for Michelin stars, or try a pop up restaurant for something new.

Theatre

No visit to London would be complete without spending some time soaking up the unique atmosphere in the West End. From Oliver to Chicago, there is a show to suit all tastes.

Museums and galleries

London has the galleries, museums and theatres to keep you busy for a year or two. Here are 10 of the best attractions:

- British Museum
- Tate Modern
- National Gallery
- Natural History Museum
- London Eye
- Victoria and Albert Museum
- Science Museum
- The Tower of London
- Madam Tussauds
- Royal Museums Greenwich

Afternoon tea

A spot of afternoon tea, yes please! You are spoilt for choice with The Ritz, Claridge's, The Dorchester or The Savoy – sit back and enjoy the fresh cream and cucumber sandwiches with a pot of the finest English tea.

Useful information

The White Town House at a glance

Sleeps up to 12 guests

- Six bedrooms
- Five double rooms
- Three shared bathrooms
- Ground floor WC

Cooking and Dining

- Dining table seats up to 16 comfortably
- Fantastic chef available for a special meal or throughout the weekend
- Drop-off meals available
- Stylish kitchen with five burner gas hob and electric oven
- Two built-in fridge-freezers
- Two dishwashers
- Catering-style meat-slicer and patisserie food mixer
- Two integrated plate warmers
- Built-in espresso coffee machine
- Blender, juice and smoothie maker
- Three four-slice toasters and two kettles
- Gas BBQ
- Tables and chairs on terrace
- Good dining nearby
- Online deliveries

Children Welcome

- Babysitting service available
- Playground nearby

Where We Are

- In Tooting Bec, London
- The postcode is SW17 8JJ
- The nearest underground station is Tooting Bec, a 10 minute walk away
- The nearest airport is London City Airport
- Taxis available
- Ample off-street parking

Things to Do Inside

- Sky TV
- Wi-fi
- DVD player and DVDs
- iPod docks
- Piano
- Library

Useful information

Things to Do Outside

- Large tiled terrace area
- Patio heater
- Gas barbeque
- Palm trees

Activities

- Shopping
- Museums and galleries
- The London Eye
- London Zoo

Top Things to Do for Children

- The Science Museum
- The Natural History Museum
- London Dungeons
- London Zoo

Payment process

- We take a one third deposit at the time of booking
- The balance is due three months before the date booked

Cautionary deposit

- £1,000 refundable deposit

House restrictions

- No pets please
- No smoking please
- Not suitable for stag parties

Arrival and Departure

- Check in 4pm
- Check out 10am

What's included

- Linen
- Towels
- Welcome hamper
- Logs for the living and dining room wood burners and fire pit
- Wi-fi
- Utilities
- Extra housekeeping available on request
- House-dressing service available on request