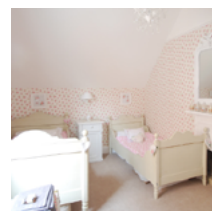
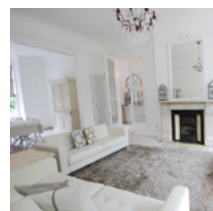


Extraordinary holidays, celebrations & adventures



Enjoying your stay at The White Villa

Everything you need to get the most out of your stay

Contents

Arrival3
<i>Where We Are</i>	3
<i>Check in and check out</i>	3
Cooking & dining - chef services.5
Cooking & dining - great places to eat & drink6
Cooking & dining - shopping for food8
Top things to do with children.9
Top places to visit & shop nearby	10
Useful information	11

Arrival

Where We Are

Please note that The White Villa is the marketing name we give the property, which is locally known as 'Hopton Lodge'. Please use 'Hopton Lodge' if you are delivering anything to the house.

Property Name:	Hopton Lodge
Address:	Hopton Road, Streatham Hill South West London
Postcode:	SW16 2EN

Check in and check out

Check in time:	4pm
Check out time for 2 night weekend booking:	10am Sunday
Check out time for 3 night weekend booking:	10am Monday
Check out time for 7 night week bookings:	10am Friday

In the event of an emergency please contact Catherine on 0208 6723680

Arrival

Getting To Us

The best postcode to use with satnav is:	SW16 2EN
Nearest train station and distance:	Streatham Rail Station, a seven minute walk away
The nearest airport is:	London City Airport
Reliable taxi service:	Savoy Minicabs 179 Tooting High Street London, SW17 0SZ 020 8672 0000 SavoyMinicab.co.uk

Directions to The White Villa

The White Villa is relatively easy to find if you're travelling by car.

Via the M40

Head south on M42 for 10 miles. At junction 3A use the left 2 lanes to merge onto M40 to London. Drive for 66 miles straight and stay right to stay on M40 for 18 miles. At junction 1A, use the left 2 lanes to take the M25 exit to M4/M23, after 1.5 miles merge onto the M25. After 10 miles keep left to merge onto the M4 towards Heathrow airport. Continue straight on A4/ Great West Rd. At the first roundabout take the 2nd exit on Great West rd Chicwick/A4 and continue for 2 miles before turning right onto North End Rd/B317. At the roundabout take the 2nd exit onto Lille Rd/A3218. At the next 2 roundabout take the 1st exit. Then turn right onto Harwood Rd, after 417ft, take the next right onto New King's Rd. After a mile take the left onto Wandsworth Bridge Rd/A217. At the roundabout take the 2nd exit onto Trinity Rd. After 1.5 miles turn left onto Beelevue Rd, then turn right on Streatham high street. After 0.3 miles turn right again and then take the left onto Hopton Road and your destination will be on the right.

Via the M11

From on the M11, at junction 11, take the A10 exit to A1309/Cambridge(south). At the roundabout take the fourth exit onto the M11 ramp to London. After 43 miles merge onto M11. After 0.5 miles at junction 4, use any lane to take the A406(s) exit to A12/A13/N Circular. After 5 miles merge onto N Circular Rd/A406. At the roundabout take the 2nd exit onto the A13 ramp to central London. After 2 miles keep right at the fork and merge onto A13, stay right on A13. Keep right until you see signs for Tower Bridge approach, here turn left and continue to follow the A100. At the roundabout take the 2nd exit onto New Kent Rd/A201. At the next roundabout take the 1st exit onto A3, stay left onto Kennington Park and continue to stay left onto Brixton Rd/A23. Continue straight for 1.7 miles then turn left onto Leigham Ct Rd, then after 0.4 miles turn right onto Valley Rd. At the roundabout take the 2nd exit onto Gleneldon Rd. After 0.2 miles turn left onto Maderia Rd and after half a mile turn left onto Hopton Road where your destination will be on the right.

Cooking & dining - chef services

Measured Events

Measured Events

020 7620 0950

info@measuredevents.com

www.measuredevents.com

Catering Hospitality Staff Cocktail Bartenders. They supply superior event staff and hire equipment across London, offering as much support and event management as you may need. Specialising in both Corporate and private events of any size.

Bread & Honey

Bread & Honey

020 8964 5255

bookings@breadandhoney.net

www.breadandhoneyevents.co.uk

Spearheaded by some of London's finest chefs, this up and coming catering company is one of the City's most exciting. Booking well in advance is recommended.

Cooking & dining - great places to eat & drink

Nearest pub

Railway
Railway
2 Greyhound Lane, London, SW16 5SD
02087699448
www.therailwaysw16.co.uk

Bright, sophisticated, real ale gastropub serving creative British menu, with live comedy and music., in a friendly and homely environment..

Best pubs

The Avalon
16 Balham Hill, London SW12 9EB
020 8675 8613
www.theavalonlondon.com

Nice, spacious pub offering good weekend brunches and ever-changing ales and wines.

If you're in central London then be sure to have a drink in some of these outstanding pubs and bars

The Princess Louise
208 High Holborn, London WC1V 7EP
020 7405 8816
www.princesslouisepub.co.uk

One of London's most authentic Victorian gin palaces. Polished wood, intricate tiling and etched glass screens adorn the interiors, and provide a setting for a truly memorable drink.

The Harp
47 Chandos Place, London WC2N 4HS
020 7836 0291
www.harpcoventgarden.com

Escape the throngs of tourists into this little gem just off Trafalgar Square. It's normally quite quiet so you can enjoy your drink in peace. The food here is delicious too, with the sausage baps coming up trumps.

Ape & Bird
142 Shaftesbury Ave, Soho, London WC2H 8HJ
020 7836 3119
www.apeandbird.com

This shabby-chic watering hole owned by the Venetian masterminds behind, the award winning Polpo restaurants and naturally it's a great place to wine and dine. The food here is excellent and the choice of wines and craft beers is expansive.

The French House
49 Dean Street, Soho, London W1D 5BG
020 7437 2477
www.frenchhousesoho.com

Become enveloped in London's artistic scene in this charismatic pub that is reminiscent of a boisterous 1960's french wine bar.

Cooking & dining - great places to eat & drink

Best restaurants

Harrison's Brasserie & Bar

Holland Park. 15-19 Bedford Hill, London, SW12 9RG
020 86756900
www.harrisonballham.co.uk

Having worked under Rick Stein and his Seafood

Restaurant in Padstow, fervent foodie 'Sam' created this wonderful neighbourhood restaurant which is inspired by the sea and modern British cuisine. The best place to dine in the local area.

Lamberts

Ballham High Road, London, SW12 9AZ
020 86752233
www.lambertsrestaurant.com

This exciting restaurant, also just down the road, combines all the best fresh, in-season produce to whip up a food that's delicious, inventive and totally British. Expect dishes like rabbit with truffled mayonnaise and spring vegetables or chargrilled mackerel, goosberry and fennel.

Child-friendly restaurants

Bubba Gump Shrimp

Unit 75 Trocadero, 13 Coventry Street London, W1D 7AB
0203 7635 288
www.bubbagumpshrimp.co.uk

Experience America's Deep South in this 'Forrest

Gump' themed restaurant. In keeping with the film, they specialise on a selection of shrimp based dishes, however they also have a lovely selection of classic southern dishes and a brilliant children's menu.

Giraffe

There are a number of restaurants in London, sites include, Belsize Park, Kensington and Holland Park to name a few.
www.giraffe.net

Is a modern and lively restaurant dedicated to serving fresh and healthy foods all day long. They serve a brilliant weekend brunch and are perfectly tailored to be extremely child friendly.

Cooking & dining - shopping for food

Local supermarkets

Sainsbury's

480 Streatham High Rd, London, SW16 3PY - 0.5 miles
020 8764 0435

Larger supermarkets

Waitrose

134 - 152 Balham High Road, SW12 9BN - 2 miles

Wine merchants

Bottle Apostle

59 Abbeville Road, London SW4 9JW - 1.5 miles
020 3376 1447
www.bottleapostle.com/clapham

If you're looking for good wine, look no further. With 450 of the best wines money can buy, with focus on Italian and Portuguese regions. Excellent craft beers and ciders can be found here too.

Delicatessens

The Mount Street Deli

100 Mount Street, London W1K 2TG
020 7499 6843
www.themountstreetdeli.co.uk

Has a good range of French, Spanish, Italian and British luxury foods. Hams, game, poultry and fish are all available, plus they can put you in touch with some excellent local caterers.

Lina Stores

18 Brewer Street, London W1F 0SH
020 7437 6482
www.linastores.co.uk

An Italian delicatessen, that import and sell authentic Italian goods. They make fresh pasta, cakes and hot dishes on site as well as serving the most heavenly coffees.

Bakery

Nordic Bakery

14A Golden Square, London W1F 9JG
020 3230 1077
www.nordicbakery.com

A beautifully authentic Scandinavian style bakery, that uses genuine Nordic recipes and ingredients to create delicious pastries, cakes and other tasty delicacies.

You don't bring me flowers

15 Staplehurst Road, Hither Green, London, SE13 5ND
020 82972333
www.youdon'tbringmeflowers.co.uk

This vintage inspired, florist/cafe/bakery is a rare find. They sell a variety of delicious cakes and pastries with a French theme running through the heart of this pretty little gem.

Top things to do with children

London Dungeons

The London Dungeon

Riverside Building, Westminster Bridge Rd SE1 7PB
www.thedungeons.com/london/en
0871 423 2240

The London Dungeons invites you to delve into the capital's most horrible history. Come face to face with live actors, experience three thrilling rides, interactive shows and special effects as you're transported back to those black, bleak times. The kids will love the gruesome stories that lie within.

Play Park

Kensington Gardens

London W2 2UH

Children love racing around the Diana, Princess of Wales Memorial Playground in Kensington Gardens. Inspired by the stories of Peter Pan this magical playground has a huge wooden pirate ship as its centerpiece.

Toy Shop

Hamleys

188-196 Regent Street, London W1B 5BT
0371 704 1977
www.hamleys.com

Find the finest toys for boys and girls by gender, age or amount to spend in London's most famous toyshop, with seven floors filled with every conceivable toy from all the popular brands. Even the nurseries and playrooms of the Queen and her children have been stocked from this extraordinary shop.

London Zoo

London Zoo

Regent's Park NW1 4RY
020 7449 6200
www.zsl.org/zsl-london-zoo

Lions and tigers and bears oh my! Everything you could wish for is at London Zoo, but the enclosure to head for is the pool at Penguin Beach. Happy feet for your happy kids.

The Natural History Museum

Cromwell Rd, London SW7 5BD
020 7942 5000
www.nhm.ac.uk

With over 80 million specimens to see, there is hours of endless education and fun to be had. The interactive dinosaur section and butterfly museum are well worth a visit and are bound to keep the children entertained.

Top Places to visit & shop nearby

Central London

Flex your plastic on Bond Street. And when you need a bite to eat, take your pick from some of the best restaurants in the world. Book ahead for Michelin stars, or try a pop up restaurant for something new.

Theatre

No visit to London would be complete without spending some time soaking up the unique atmosphere in the West End. From Oliver to Chicago, there is a show to suit all tastes.

Museums and galleries

London has the galleries, museums and theatres to keep you busy for a year or two. Here are 10 of the best attractions:

- British Museum
- Tate Modern
- National Gallery
- Natural History Museum
- London Eye
- Victoria and Albert Museum
- Science Museum
- The Tower of London
- Madam Tussauds
- Royal Museums Greenwich

Afternoon Tea

A spot of afternoon tea, yes please! You are spoilt for choice with The Ritz, Claridge's, The Dorchester or The Savoy – sit back and enjoy the fresh cream and cucumber sandwiches with a pot of the finest English tea.

Useful information

The White Villa at a glance

Bedrooms and Bathrooms

- Sleeps 16-17 guests
- Two shared bathrooms
- Downstairs WC
- Additional Single bed available if required

Bedrooms	Sleeps	Beds
Bedroom 1	2	Double
Bedroom 2	2	King
Bedroom 3	2	King
Bedroom 4	3	Super King* + Single
Bedroom 5	2	Twin
Bedroom 6	3	Singles
Bedroom 7	2	Double

* Zip-and-link bed providing option for Twin set-up

Cooking and Dining

- The main dining table seats 8 comfortably
- The kitchen dining table seats 16 comfortably
- Fantastic chef available for a special meal or throughout the weekend
- Drop-off meals available
- Built-in oven and gas hob
- Large fridge-freezer, microwave, dishwasher
- Walk to a good pub
- Good dining nearby
- Online deliveries

Where We Are

- London
- The postcode is SW16 2EN
- The nearest station is Streatham Rail Station, a seven minute walk away
- The nearest airport is London City Airport
- Taxis available
- Ample off-street parking

Things to Do Inside

- Large flatscreen TV
- DVD player
- Wi-fi
- Hi-fi

Useful information

Things to Do Outside

- Large garden
- Garden Terrace
- Garden furniture for alfresco dining

Activities

- Shopping
- Museums and galleries
- Pampering and beauty treatments at the house
- West end musicals
- London Eye

Top Things to Do for Children

- The Science Museum
- The Natural History Museum
- London Dungeons
- London Zoo

Payment process

- We take a one third deposit at the time of booking
- The balance is due three months before the date booked
-

Cautionary deposit

- £500 refundable deposit

House restrictions

- No pets please
- Noise policy in place
- Not suitable for stag

Arrival and Departure

- Check in 4pm
- Check out 10am

What's included

- Linen
- Towels
- Tablecloths and napkins
- Welcome hamper
- Wi-fi
- Utilities
- Extra housekeeping available on request
- House-dressing service available on request