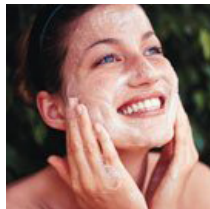
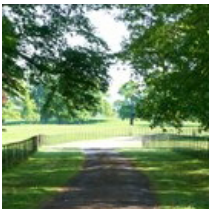


**kate & tom's**

*Extraordinary holidays, celebrations & adventures*



## Enjoying your stay at The Yard

*Everything you need to get the most out of your stay*

# Contents

---

Arrival . . . . .	.3
<i>Where We Are</i> . . . . .	3
<i>Check in and check out</i> . . . . .	3
Cooking & dining - chef services. . . . .	.5
Cooking & dining - great places to eat & drink . . . . .	.6
Cooking & dining - shopping for food . . . . .	.8
Things to do - activities & pampering . . . . .	.9
Top things to do with children. . . . .	11
Top places to visit & shop nearby . . . . .	13
Useful information . . . . .	14
Guest Reviews . . . . .	16

# Arrival

---

## Where We Are

Property Name: The Yard  
Address: Cooks Lane  
Redmarley D'Abitot

County: Gloucestershire  
Postcode: GL19 3LD

## Check in and check out

Contact name for check in: Charlie  
Contact number for check in: 07775927224

Check in time: 4pm  
Check out time for 2 night weekend booking: 4pm Sunday  
Check out time for 3 night weekend booking: 10pm Monday  
Check out time for 7 night week bookings: 10pm Friday

# Arrival

---

## Getting To Us

The best postcode to use with satnav is:  
Nearest train station and distance:

GL19 3LD  
Ledbury

The nearest airport is:

Staverton

Reliable taxi service:

**Countryside Taxis**  
Moorend Road  
Eldersfield  
Gloucestershire  
GL19 4NS

**07831 560654**

# Cooking & dining - chef services

---

## Taste Catering

### **Taste Catering**

Holmer Trading Estate, Hereford, HR1 1JS  
01432 273537 / 07799 002826  
email: [enquiries@tastemenu.co.uk](mailto:enquiries@tastemenu.co.uk)  
[www.tastemenu.co.uk/](http://www.tastemenu.co.uk/)

Taste Catering is an excellent catering service, specializing in creative, bespoke dining. All ingredients are sourced from local butchers and farmers markets and created into culinary delights. With over 25 years worth of experience, the team are dedicated to making any occasion simply perfect.

## Bensons of Broadway

### **Bensons of Broadway**

01684 854406 / 07807 453308.  
5 Park Road, Gloucester, GL1 1LH  
e-mail: [info@bensonscateringltd.co.uk](mailto:info@bensonscateringltd.co.uk)  
[www.bensoncateringltd.co.uk](http://www.bensoncateringltd.co.uk)

Highly recommended by our guests, James Benson is a former Claridge's and Lygon Arms chef who uses fresh, Cotswolds produce. To add an extra special touch to your break, James can be your Chef for a night cooking a three course meal or provide you with superb, ready to go meals or barbecue dishes dropped off for your convenience.

# Cooking & dining - great places to eat & drink

---

## Nearest pub

### **The Inn at Redmarley**

Playley Green, Redmarley D'Abitot, Gloucester  
GL19 3NB  
01531 650234

The Inn is a fantastic pub located just outside Ledbury. They have a large, homely bar and a dining area, perfect for sampling the delicious menu. During the summer, why not sit the large beer garden, whilst enjoying a relaxed evening, with the stunning view.

## Best pubs

### **The Swan**

Ledbury Rd Cres, Staunton, Gloucestershire GL19  
3QA  
01452 840323

This friendly, lively pub, is extremely warm and inviting. Offering a great selection of ales and wines. The food menu is worth checking out too!

### **The Retreat**

7 High St, Ledbury HR8 1DS  
01531 632766

Set in the beautiful town of Ledbury, this traditional pub is a great place to grab an ale and play pool. There is a pretty beer garden, perfect for pimmis in the sunshine and the food menu offers some homemade, locally sourced dishes.

### **The Horseshoe Inn**

The Homend, Ledbury, Herefordshire HR8 1BP  
01531 632770

This rustic looking pub, is homely and friendly. They offer a wide selection of ales and are also well known for making the best wood fired pizzas.

# Cooking & dining - great places to eat & drink

---

## Best restaurants

### Three Choirs Inn

Newent, Gloucestershire GL18 1LS  
01531 890223  
[www.three-choirs-vineyards.co.uk](http://www.three-choirs-vineyards.co.uk)

Nestled in 30 hectares of vineyard, this incredible restaurant offers delicious food, accompanied by incredible wine.

### Corse Lawn House Hotel

Corse Lawn, Gloucester, GL19 4LZ  
01452 780771  
[www.corselawn.com](http://www.corselawn.com)

The restaurant offers authentic, fantastic British cuisine and the menu is based around seasonal, local produce. The staff here are all extremely friendly and knowledgeable, offering advice on suitable wines according to the dish chosen.

### Butchers Arms

Lime St, Gloucester GL19 4NX  
01452 840381  
[www.thebutchersarms.net](http://www.thebutchersarms.net)

This Michelin Starred gastropub, offers a fantastic atmosphere as well as excellent dining. The menu is a selection of British classics with modern twists. A must visit!

# Cooking & dining - shopping for food

---

## Supermarkets

### Tesco

Orchard Lane, Ledbury, Herefordshire, HR8 1DQ  
0345 6779415  
[www.tesco.co.uk](http://www.tesco.co.uk)

### Waitrose

Edith Walk, Great Malvern, WR14 4WR  
01684 560007  
[www.waitrose.com](http://www.waitrose.com)

## Wine merchants

### Hay Wines

11 High Street, Ledbury, Herefordshire, HR8 1DS  
01531 634449  
[www.haywines.co.uk](http://www.haywines.co.uk)

Stocks wine to suit all occasions. They cater to dinner parties, too, and can offer advice on which wines to pick, plus they can deliver to the house. Contact them for further details.

## Delicatessens

### Four Oaks Fine Foods

70 The Homend, Ledbury, Herefordshire HR8 1BX  
01531 631979  
[www.four-oaks.co.uk](http://www.four-oaks.co.uk)

Has a good range of French, Spanish, Italian and British luxury foods. Hams, game, poultry and fish are all available, plus they can put you in touch with some excellent local caterers.

## Bakery

### Homend Bakery Shop

46 The Homend, Ledbury HR8 1BT  
01531 632827

Homend Bakery Shop is a traditional, locally run bakery, with a vast selection of breads, cakes, pastries as well as savory options, that are all freshly prepared and baked in store.

## Butchers

### Ben Morton Meats

The Butchers Shop  
Ledbury Road, Staunton, Gloucestershire  
01452840572

This fantastic butchers offers a huge range of freshly cut and locally sourced produce.



# Things to do - activities & pampering

---

## Outdoor activities

### Malvern Outdoor Elements

Old Hollow, West Malvern, Worcestershire, WR14 4NR  
01684 574546  
[www.malvernoutdoors.co.uk](http://www.malvernoutdoors.co.uk)

Lots of activities to choose from here: quad biking, raft building, target shooting, tree trekking and adrenaline experiences. You can choose to do one of the activities or even opt for a multi-activity package.

### Wye Canoes

Ye Old Ferrie Inn, Symonds Yat West, Ross-on-Wye, Herefordshire HR9 6BL  
01600 890027  
[www.wyecanoes.com](http://www.wyecanoes.com)

Want to Canoe? Offer an opportunity to paddle your way down the River Wye, where you will expect to see spectacular views. There are several different routes as well as pick-up points and camping can be arranged between locations on request.

## Horse riding

### Hayeswood Riding

Redmarley D'Abitot, GL19 3NJ Redmarley D'Abitot  
07799 740820  
[www.hayswoodequestrian.co.uk](http://www.hayswoodequestrian.co.uk)

Hayeswood Riding is a small horse riding centre located right on the edge of the Forest of Dean. They offer riding lessons for all abilities in a large outdoor arena and they have fantastic opportunities for trekking in the Forest of Dean.

## Landrover Experience

### Landrover Experience

The Bothy, Ledbury, Herefordshire HR8 1RL  
01531 638779  
[www.eastnor.landroverexperience.co.uk](http://www.eastnor.landroverexperience.co.uk)

This is an exhilarating way to explore the countryside at high speed. The perfect day out for adrenaline junkies! There are a variety of options available, including full days, half days as well as night time driving,

## Hot air ballooning

### Wicker World

01889 882222  
Eastnor Castle, Ledbury, HR8 1RL- 20 miles  
[www.wickerworld.co.uk](http://www.wickerworld.co.uk)

One of the best ways to experience the gorgeous Herefordshire and Worcestershire countryside is from up above. Taking off in nearby Ledbury, you will rise up above the historic Eastnor Castle and glide over the patchwork fields and wooded vales which make up the quintessence of these two great counties.

# Things to do - activities & pampering

---

## Tennis, squash and gym

### Ross on Wye Tennis Centre

Ashfield Park Road, off Walford Road HR9 5AR  
01989 566607

Excellent facilities, offering a variety of programmes and lessons for all ages and abilities.

## Pampering

### Wye Valley Spa

Leys Hill, Ross-on-Wye, HR9 5QU- 15 miles  
01600 890109  
[www.wyevalleyspa.co.uk](http://www.wyevalleyspa.co.uk)

The Wye Valley Spa is set in an exquisite, private location in the Wye Valley. They offer a selection of spa treatments, luxurious facilities and excellent food also.

### The Malvern Spa

Grovewood Rd, Malvern, Worcestershire WR14 1GD  
01684 898290

This finalist of the Best Pa award in the Midlands and east offer a huge variety of spa treatments as well as access to a hydrotherapy pool and a 22m indoor swimming pool. The facilities here are brilliant and you're really spoilt for choice with treatments and packages.

# Top things to do with children

---

## Clearwell Caves

### Clearwell Caves

The Rocks, Coleford, Gloucestershire GL16 8JR  
01594 832535  
[www.clearwellcaves.com](http://www.clearwellcaves.com)

Clearwell caves are a working mine museum, exhibiting impressive hand created caverns as well as the tools and machinery used to create them. This is a fantastic day out for the family!

## Visit a Butterfly Zoo

### Wye Butterfly Zoo

Jubilee Park, Ross on Wye, HR9 6DA-  
01600 890360  
[www.wyevalleyvisitorcentre.co.uk](http://www.wyevalleyvisitorcentre.co.uk)

You can walk with butterflies from around the world. Wye Valley Butterfly Zoo is indoors, it's tropical and it's teeming with exotic butterflies. Living butterflies fly around as you discover their fascinating lives in close-up. They're amazing.

## Go Ape

### GoApe

Mallards Pike Lake, Lydney, Gloucestershire GL15 4HD  
0845 643 9215  
[goape.co.uk](http://goape.co.uk)

This award winning forest activity set 15m above the ground, is an exhilarating adventure. From leaping off a platform, to rope walks and zip wires, there is an activity for everyone.

## Dick Whittington Farm Park

### Dick Whittington Farm Park

Little London, Longhope, Gloucestershire GL17 0PH  
01452 831000  
[www.dickwhittington.org](http://www.dickwhittington.org)

The perfect location for a fun family day out with plenty to see and do. From nature trails to tractor rides, giant sand pits and soft play areas. There is something for everyone.

## Explore Eastnor Castle

### Eastnor Castle

Eastnor Castle, Ledbury, HR8 1RL- 21 miles  
01531633160  
[www.eastnorcastle.com](http://www.eastnorcastle.com)

Eastnor Castle is a 19th-century revival castle, by the village of Eastnor. Currently in residence is the family of James Hervey-Bathurst. The castle is a Grade I listed building. The grounds are the location of the Land Rover vehicle test track, allowing visitors the chance to try off-roading in the company's latest models.

# Top places to visit & shop nearby

---

## Hereford- 22 miles

With a friendly market town atmosphere, Hereford is the market and commercial centre of Herefordshire farming communities for hundreds of years.

Hereford is a lovely city with a lively feel. There are lots of things to do, not least indulging in some shopping! Wander around the independent stores in the historical centre and call in to the prestigious Old Market, built on the site of the old livestock market. The livestock market has a new, modern home just outside Hereford on Roman Road featuring regular auction sales of the region's livestock..

Why not soak up the rich historic heritage by visiting The Old House, the striking black and white veneer is prime example of Jacobean architecture or head to the Cathedral and gaze upon its magnificence.

### **The Old House**

High Town, Hereford HR1 2AA  
01432 260694  
[www.herefordshire.gov.uk/museums](http://www.herefordshire.gov.uk/museums)

### **The Cider Museum Hereford**

Pomona Place, Hereford HR4 0EF  
01432 354207  
[www.cidermuseum.co.uk](http://www.cidermuseum.co.uk)

### **Old Market Shopping Centre**

Newmarket St Hereford HR4 9HR  
01432 264109  
[www.oldmarkethereford.co.uk](http://www.oldmarkethereford.co.uk)

## Ross-on-Wye- 14 miles

Draped on a hill, the centre of Ross is rapidly gaining a reputation as a town that celebrates independent shops. From clothing and couture to furnishings, food, and fantastic places to stop and unwind – it's a thriving place for those who prefer their high street a little less corporate.

There's a rich local history in these 'ere parts with the 17th Century Market House in the very centre of Ross still sheltering twice weekly markets beneath its sandstone arches.

There's no mistaking Ross-on-Wye in south Herefordshire as a market town. St Mary's Church spire has shaped the skyline of Ross-on-Wye for over 700 years.

### **Wilton Castle and Gardens**

Wilton, Ross-on-Wye, HR9 6AD  
01989 565759  
[www.wiltoncastle.eclipse.co.uk](http://www.wiltoncastle.eclipse.co.uk)

### **Ross Old Books**

51-52 High St Ross-on-Wye, HR9 5HH  
01963 350917

### **Tudor Sweets**

Tudor House, High Street, Ross-on-Wye HR9 5HL  
01989 566449  
[www.tudorsweetsofross.com](http://www.tudorsweetsofross.com)

# Useful information

---

## The Yard at a glance

### Bedrooms and Bathrooms

- Sleeps up to four guests
- Two bedrooms, one of which has an ensuite shower room
- One kingsize bedroom and one twin bedroom

### Cooking and Dining

- Dining table seats up to four guests comfortably
- Fantastic chef available for a special meal or throughout the weekend
- Drop-off meals available
- Electric fan oven and electric hob
- Coal BBQ
- Tables and chairs on terrace
- Good dining nearby
- Online deliveries

### Children Welcome

- Toys, books and DVDs for children
- Cot available
- High chair available

### Where We Are

- In Gloucestershire
- The postcode is GL19 3LD
- The nearest station is Ledbury, an 11 minute drive
- The nearest airport is Birmingham
- Taxis available
- Parking for three cars

### Things to Do Inside

- 42"TV with Freeview
- DVD player and DVDs

### Things to Do Outside

- Terrace and garden
- Hot Tub

### Activities

- Country pursuits available nearby, including clay pigeon shooting
- Horse Riding
- Golf
- Hiking
- Pampering and beauty treatments at the house
- Michelin Star restaurant, The Butcher Arms nearby

# Useful information

---

## Top Things to Do for Children

- Go Ape
- Dick Whittington Farm Park
- Eastnor Castle

## Payment process

- We take a one third deposit at the time of booking
- The balance is due three months before the date booked

## Cautionary deposit

- £500 refundable deposit

## House restrictions

- No pets please
- No fireworks please
- Not suitable for hens and stag parties
- Suitable for families only
- No Wi-Fi

## Arrival and Departure

- Check in 4pm
- Check out 4pm Sunday
- Check out 10am other days

## What's included

- Linen
- Towels
- Welcome hamper
- Essentials
- Utilities

## Hot Tub Usage

We hope you'll enjoy using the hot tub. We want to make sure it is as safe as possible for everyone, so we ask all guests to ensure that the following guidelines are respected. These guidelines are designed to meet basic health and safety regulations, so ensure that all members of your party have read the rules regarding the use of the hot tub.

1. Swimming costumes are obligatory and you may need to bring your own towels
2. You must shower before entering the hot tub to remove any skin oils, make-up, hair products etc. This is vital to ensure a clean and healthy hot tub. If this rule is abused the hot tub may need to be closed for several days so that the water can be thoroughly refreshed. In the event of closure, no refund will be made and cleaning costs will be charged to your party.
3. Outdoor shoes and coats must be taken off around the hot tub area.
4. No alcohol or smoking is allowed in the hot tub.
5. Do not bring any form of glass into the hot tub area.
6. Do not bring in any electrical equipment into the hot tub area where you could be in contact with water.
7. Before using the hot tub, please take out the chlorine dispenser. Put it back in when everyone has left the hot tub.
8. Do not over-occupy the hot tub as this will lead to water spillage and will cause the hot tub to stop working. This is because the filter needs to be covered with water to work.
9. Children must be supervised in and around the hot tub and must not use it without an adult present. Some children can overheat; please seek medical advice if this occurs.
10. Please keep noise levels to an acceptable level. The hot tub is a place of peace and relaxation – be mindful that there are neighbouring properties.
11. It is safer and more enjoyable to use the hot tub with another person. We advise against using the hot tub alone without a member of your group knowing of your whereabouts.
12. On leaving the hot tub, please switch off all jets and lights and make sure that the hot tub is sealed with the cover provided.
13. Please note that you must not use the hot tub if you are suffering from an infectious disease or you have an open wound or sore that cannot be covered by a waterproof plaster.
14. You must not use the hot tub within 48 hours of suffering any stomach illness.
15. Certain medical conditions can be affected by the hot tub, particularly those involving extremes of temperature. You are advised to consult your doctor if you are pregnant or suffer from any of the following: heart disease; circulatory problems; high or low blood pressure; diabetes; or any other condition that affects your body's ability to react to heat.
16. Prevent taking any medication which may affect your circulation or your ability to react to heat.

# Guest reviews

---

"The cottage was lovely. Very modern with beautiful decor and ample space for our family of 4. We had an excellent time and would recommend."

- **Duncan**

"We had a fantastic time at The Yard last weekend, we really didn't want to go home!!"

- **Justin**