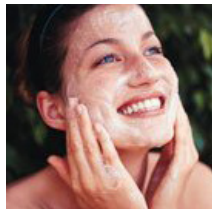
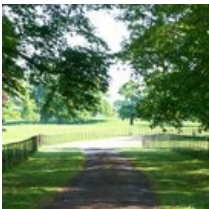


**kate & tom's**

*Extraordinary holidays, celebrations & adventures*



## Enjoying your stay at Tortree Hall

*Everything you need to get the most out of your stay*

# Contents

---

Arrival . . . . .	3
<i>Where We Are</i> . . . . .	3
<i>Check in and check out</i> . . . . .	3
Cooking & dining - chef services. . . . .	5
Cooking & dining - great places to eat & drink . . . . .	6
Cooking & Dining - Shopping for Food . . . . .	10
Things to do - activities and pampering . . . . .	11
Top things to do with children. . . . .	15
Top places to visit & shop nearby . . . . .	16
Useful information . . . . .	18
Guest Reviews . . . . .	20

# Arrival

---

## Where We Are

Property Name: Tortree Hall  
Address: Melmerby Hall,  
Melmerby  
County: Cumbria  
Postcode: CA10 1HB  
  
Phone number at the house: 01768 881 333

## Check in and check out

Check in time: 4pm  
  
Contact name for check in: Jilly Musgrave  
Contact number for check in: 07732 167 444

Check out time for 2 night weekend booking: 4pm Sunday  
Check out time for 3 night weekend booking: 10am Monday  
Check out time for 7 night week bookings: 10am Friday

The best postcode to use with Satnav is: CA10 1HB  
  
Nearest Train station and distance: Penrith, a 13 minute drive  
  
The nearest airport is: Carlisle

# Getting to Us

---

The best postcode to use with Satnav is: CA10 1HB

Nearest Train station and distance: Penrith, a 13 minute drive

Taxis available: Abbey Taxi 07789 023 023  
Town Taxi 01768 868 268

## Directions:

From the M6

Keep right to stay on M6

At junction 40, take the A66 exit to Penrith/Workington/Brough

Take A686 to your destination

At the roundabout, take the 4th exit onto A66

At the roundabout, take the 2nd exit onto Carleton Ave/A686

Continue to follow A686

Turn left

Turn left

Destination will be on the right

# Cooking & dining - chef services

---

You'll find our top recommendations below. If you do discover any other gems please do let us know and we will share them with other guests visiting the property.

## **Drop-off meal service**

### **Just Jilly**

07732 167 444 / 01768 898 573

[jilly@therowleystates.com](mailto:jilly@therowleystates.com)

Jilly offers personal service, great fresh ingredients and traditional Cumberland menus customised for you and your friends.

Jilly is the manager for the Rowley Estates and has an intimate knowledge of all of our properties and the legacy of stories behind them. "Just Jilly" is Jilly's own business and she and her team will either come and drop off a fabulous meal for you or will come to your property with your meal, prepare the dining room and provide a full waitress service.

## **Local Produce that the area is renowned for**

Cumbria is a region blessed by a rich heritage and outstanding natural beauty and is home to a vibrant business community who've built a reputation for quality and excellence. Known for its meat products by and large, such as Cumberland sausage, which comes coiled like a rope instead of links and sometimes sold by length, or Cumberland Ham. A number of dairy farms produce their own cheese. An old custom saw Cumberland rum butter served with oatcakes to celebrate the birth of a baby.

Try food from the award winning Melmerby Village Bakery, winner of The Organic Trophy and also of the Guild of Fine Food Retailers Great Taste Awards.

# Cooking & dining - great places to eat & drink

---

## Nearest pub

Shepherd's Inn, Melmerby, Cumbria CA10 1HF (0.2 miles away / 5 minute walk)  
01768 881 439

Friendly family-run split-level country pub, comfortable heavy-beamed dining room off flagstoned bar; spacious end room with sofa and leather chairs by woodburner; good choice of popular tasty food, well kept changing ales, seven wines by the glass, darts; children and dogs welcome, terrace tables, open all day in summer.

## Pubs

The Shepherds Inn (Langwathby), Village Green, Langwathby, Penrith, Cumbria CA10 1LW (4.2 miles away / 8 minute drive)  
01768 881463

They provide a warm and welcoming pub delivering delicious dishes made from top-quality locally sourced produce together with an impressive selection of Cumbrian ales and 'moreish' wines. You can enjoy the park at the front or beer garden at the back and for those inclement days then the cosy interior with wood burning stoves, comfy seats and a television showing sports will soon make your day.  
[www.shepherds-inn.co.uk/](http://www.shepherds-inn.co.uk/)

The Crown Inn, Kirkoswald, CA10 1DQ (6.3 miles / 15 minute drive)  
01768 870 410

Great traditional meals with some Italian cuisine choice; a good recommendation to book for dinner.

Highland Drove, Great Salkeld, Penrith, Cumbria CA11 9NA (7.4 miles away / 16 minute drive)  
01768 898349

A great selection of beers – the local CAMRA groups beat a path to our door – a superlative wine list, award winning food, roaring fires in winter; great company and conversation; the Highland Drove is the epitome of what is best about the English country pub. Les Routiers has chosen it as one of its Northern Dining Pubs of the Year while the Good Pub Guide bestowed the accolade of Cumbria Dining Pub of the Year on it.  
[www.kyloes.co.uk/index.php/highland-drove/](http://www.kyloes.co.uk/index.php/highland-drove/)

## Cooking & dining - great places to eat & drink

---

**The Fetherston Arms, The Square, Kirkoswald, Penrith CA10 1DQ (5.9 miles away/16 minute drive)**  
01768 898 284

Located on the square right in the middle of Kirkoswald. They offer a warm cosy atmosphere, great home-cooked food and a range of both local and national cask beers. A great place to visit, whether you're having a snack at lunchtime or coming in for a drink with friends in the evening!  
[www.fetherston-arms.com/](http://www.fetherston-arms.com/)

**The Joiners Arms, Lazonby, Cumbria CA10 1BL (6.8 miles away / 18 minute drive)**  
01768 898 728

Recently reopened traditional village pub. The bar area is supplemented with a small games annex and a larger function room. The rear beer garden affords extensive views of the Eden valley and Pennine Hills.

### **Restaurants**

**George and Dragon, Clifton, Penrith, Cumbria CA10 2ER (10.8 miles away/20 minute drive)**  
01768 865 381

It's hard not to be impressed by the provenance of the food at this enterprising pub – a genuinely informal hostelry with terrific grub. Shorthorn beef, local lamb, rare-breed pork & free-range chickens all come from the nearby Lowther Estate. There are plenty of fish & veggie options too. The interior is a clever & convincing blend of natural materials. Families, children, walkers, cyclists & dogs all welcome.  
[www.georgeanddragonclifton.co.uk](http://www.georgeanddragonclifton.co.uk)

**Hartside Café, Hartside Top, Alston CA9 3BW (15 minute drive)**  
01434 381 036

The walk, cycle or drive is really worth it for the views and the great traditional café drinks and snacks. Weather permitting the hours are 9 – 5 and is closed in December.

**Four and Twenty, 42 King Street, Penrith CA11 (9.5 miles away/19 minute drive)**  
01768 210 231

This dining experience in the centre of Penrith was ranked at number one for the area on the TripAdvisor charts within two months of opening in November 2013. The restaurant offers a regularly changing menu based around a continental theme as well as some classic dishes complimented with a range of excellent wines and beers. Bookings are advised for evenings as the restaurant can be booked up well in advance.  
[www.fourandtwentypenrith.co.uk/](http://www.fourandtwentypenrith.co.uk/)



## Cooking & dining - great places to eat & drink

---

**Grants of Castlegate Wine Bar and Restaurant, 54, Castlegate, Penrith CA11 7HY (10.2 miles / 19 minute drive)**

01768 895444

Hours: Wednesday – Saturday 12:00pm – 15:00pm and 19:00pm – 23:00pm. Sunday 19:00pm - 23:00pm.

**The Restaurant and Bar, Ullswater Road, Penrith, Cumbria, CA11 8QT (10.1 miles away/20 minute drive)**

01768 868 111

From its simple locally-sourced dishes to the open, timber-beamed interior, with no less than six real fires, The Restaurant & Bar, Penrith makes the most of its natural surroundings. Experience a mouth-watering menu with a distinct Cumbrian flavour and look forward to the freshest local ingredients. As a family friendly hotel, the restaurant offers a wide range of children's meals that will keep even the fussiest of eaters happy.

[www.restaurant-and-bar.co.uk/penrith](http://www.restaurant-and-bar.co.uk/penrith)

**Lovelady Shield Country House Hotel, Lovelady Lane, Alston, Cumbria CA9 3LX (13.5 miles away/27 minute drive)**

01434 381 203

The restaurant provides elegant surroundings in which to enjoy the award winning cuisine prepared by Anthony Muir and his team. Anthony's menus are imaginative and varied using mostly local produce and change with the season.

[www.lovelady.co.uk/restaurant.htm](http://www.lovelady.co.uk/restaurant.htm)

**Mardale Inn, St Patricks Well, Bampton, Penrith, Penrith, Cumbria, CA10 2RQ (16.5 miles away/31 minute drive)**

01931 713 244

Sitting at the southern end of Haweswater, this archetypal whitewashed Lakeland inn dates back to the 18th century. A satisfying menu of keenly priced dishes such as peppered fillet steak with balsamic shallots, fish pie, Cumbrian lamb burgers or artichoke & toasted pecan pizza provide solid restorative fuel after a day on the fells.

### **Best Takeaways**

**Thai food Café, 22/23 Devonshire Arcade, Penrith CA11 7SX**

01768 840043

Café and Takeaway with good reviews.



## Cooking & dining - great places to eat & drink

---

**Indiagate, 11a Burrowgate Penrith CA11 7TE**  
01768 210 020

Excellent eat in and take away curry. Try the spinach curry and katta masala.

**Angel Lane Chippie, 17 Angel Lane, Penrith CA11 7BP**  
01768 866 762

Winner of Fryer of the Year in 2009/2010. Same owner as Scotts Fish & Chips licenced restaurant.

**Royal Lake, 5 Sandgate, Penrith CA11 7TP**  
01768 891 725

Chinese cuisine takeaway.

# Cooking & Dining - Shopping for Food

---

## **Best local supermarket:**

Booths, Westgate House, Brunswick Road, Penrith CA11 7JU  
01768 890 666

Sainsbury's, 1 Common Garden Square, Penrith, Cumbria CA11 7FG  
01768 245 800

Morrisons, Brunswick Road, Penrith CA11 7JU  
01768 867 631

## **Butcher:**

Cranstons, Ullwater Road Penrith CA11 7EH  
01768 868 680

## **Wine Merchant**

The Wine House, 22 Devonshire Street, Penrith, Cumbria CA11 7SU  
01768 862 337

## **Major supermarket online orders**

Ocado  
[www.ocado.com](http://www.ocado.com)

Sainsbury's  
[www.sainsburys.co.uk](http://www.sainsburys.co.uk)

Morrisons  
[www.morrisons.com](http://www.morrisons.com)

# Things to do - activities and pampering

---

Our top recommendations for activities and pampering are below.

## **Quad biking**

**Rookin House Equestrian and Activity Centre, Troutbeck, Ullswater, CA11 0SS**  
01768 483 561

Rookin House offers quad biking for a variety of age groups with mini quads for 6 – 11 year olds, midi quads for 12 – 15 year olds and adult quadbiking for 16+. We must recommend this quadbiking as amongst the funnest activities to do in the Lake District when it rains.

[www.rookinhouse.co.uk](http://www.rookinhouse.co.uk)

## **Clay pigeon shooting**

07917 799 338

We can offer clay pigeon shooting including coaching for novices to experienced shots within the grounds of Tortree Hall and Birkmere Hall. Sessions normally last about three hours though there is flexibility around this, of course, depending on the number of participants & the weather.

[christine@therowleyestates.com](mailto:christine@therowleyestates.com) / [richardmgdunn@hotmail.co.uk](mailto:richardmgdunn@hotmail.co.uk)

## **Horse riding**

**Sockbridge Pony Trekking Centre**  
017683 863 468

The Pony Trekking at Sockbridge is into its third generation of family ownership and its longevity speaks to their repeat and referral business. The team easily accommodates a wide variety of ages & abilities from young kids led on shetland ponies, to adult complete novices to taking talented riders off for a gallop up the fells. Advance notice is important during the busy times & the focus for the center is during the spring and summer months.

Other popular local trekking providers are:

**Rookin House Farm, Troutbeck, Ullswater, Penrith, Cumbria, Lake District, CA11 0SS**  
017684 83561  
[enquiries@rookinhouse.co.uk](mailto:enquiries@rookinhouse.co.uk)

**Parkfoot Pony Trekking by Ullswater Howtown Road Pooley Bridge Penrith Cumbria CA10 2NA**  
017684 866 96

Situated on the edge of Ullswater, providing fully supervised treks for all, no matter what your experience.

# Things to do - activities and pampering

---

## Adventure Sports

**BOF Paintball, Maughanby Farm, Little Salkeld, Penrith, Cumbria, CA10 1NP**  
07851 976 641 / 07766 561 138

With our eight unique scenarios (and expanding) our games range from trench warfare, close quarter combat to attacking and defending varied strategic positions. BOF offer the latest in paintball equipment with TIPPMAN 98 Semi- Automatic markers, high quality paintballs, body protection, full face masks and gloves. Our trained Marshalls will ensure your BOF experience is a day to remember.

info@bofpaintball.co.uk  
www.bofpaintball.co.uk

**Leisure Centre at Penrith, Southend Road, CA11 8JH**  
01768 863 450

Eden climbing wall, gym, indoor pool, indoor bowls. Pay by activity available. Please book in advance to check times and pricing.

## Hiking

Please feel free to walk up the forest glen path surrounding Tortree Hall, which extends out of the village towards Langwathby following the stream for about 20 acres.

There is also a footpath up the Pennines, past the Shepherds Inn, heading towards Ousby on the left.

Footpath starting at Townfoot Farm just across the A686, which runs along the far side of the sandstone wall across from the front of Tortree Hall again heading towards Ousby.

Long Meg and her Daughters – Bronze Age, 3rd largest stone circle in England with more than 60 (good climbing) stones near Little Salkeld through Addingham Church and on the public bridleway from there to Long Meg over the fields.

Ladies Walk from near Langwathby bridge, park on the Penrith side then walk along the river to Eden Hall then back via the road past the cricket field – about 3 mile walk

Alfred Wainwright's favourite walk in the Lake District from Howtown to Glenridding and back via the Ullswater Steamers – don't miss this one! Be sure to stop at the campsite shop partway along for ice cream & tea

# Things to do - activities and pampering

---

## Cycling

The cycling routes around the estate are excellent. For a great session of safe and super exciting off road cycling, we recommend renting bicycles from Cyclewise at Whinlatter Forest or organising a cycle tour with CycleActive.

### **CycleActive Brougham Hall Brougham Penrith Cumbria CA10 2DE UK**

01768 840 400

[www.cycleactive.co.uk](http://www.cycleactive.co.uk)

Alternatively, if you would like excellent and well maintained cycles to be dropped off at your cottage for use during your stay, please contact Jason Taylor at Inspiring Cycling. Please enquire for more information on pricing. 07887 764 987

[www.inspiringcycling.co.uk](http://www.inspiringcycling.co.uk)

## Golf

### **Keswick Golf Club, Threlkeld, CA12 4SX**

01768 779 324

An 18 hole course in the Lake District, great views throughout. Not a long course at just over 6200 yards, par 71. Day, weekend and weekly rates available in a variety of individual and group packages including 2:1 vouchers. [www.keswickgolfclub.com](http://www.keswickgolfclub.com).

### **Penrith Golf Club, Salkeld Road, Penrith CA11 8SG**

01768 891 919

This club dates back to 1890 and has lovely views over the Eden Valley. It is a par 69 course with a recently refurbished Clubhouse. Visitors welcome with green fees ranging from £33 - 38 per round or £41 - 46 for a day ticket.

### **Penrith Golf Centre and Driving Range, Redhills CA11 0DR**

01768 892 167

300 yard floodlit driving range and a 9 hole par 30 golf course. Club and ball hire available, no booking required with green fees from £8.50 for adults (9 holes) and £ 7.50 for juniors. Driving range £3.80 per basket of 60 balls for adults or £3.30 for juniors with discounts for multiple baskets.

## Fishing

### **Penrith Angling Association, CA10 1RJ, 4.1 miles (11 minute drive)**

01768 882 94

# Things to do - activities and pampering

---

Penrith Angling Association has some of the best wild brown trout and grayling fishing in the country, set in the unspoilt and idyllic scenery of the Eden Valley. The whole river system is a Candidate European Special Area of Conservation, and a Site of Special Scientific Interest (SSSI).

[www.penrithanglers.co.uk](http://www.penrithanglers.co.uk)

## **Whins Pond (Coarse fishery)**

01768 862 671

Along the A686 about 2 miles from Penrith on the right hand side and signposted. Permits are available on site. This scenic lake encompasses about 8 acres of fishing with 30 Pegs available and is stocked with tench, bream, carp and roach. The fish grow to good size and 14 lb bream and > 20 lb carp have been caught in this lake.

## **Blencarn Rainbow Trout Fishing Lake (still water fly fishing)**

01768 882 84

This is a 15 acre lake near Skirwith reached following the A686 into Langwathby, take a right in the village signposted Skirwith and Blencarn Lake is along this road on the left hand side. There is a bothy with toilets, picnic facilities and a place to boil a kettle. Rates vary depending on time spent fishing and whether the trout are kept or catch and release. Affiliated with the Tufton Arms Hotel in Appleby.

## **Canoeing**

### **Derwentwater Marina**

Open kayaks, wetsuits and lifejackets are provided so it is suitable for beginners. Lots of good restaurants in Keswick nearby and a weekly market on Saturday and an old fashioned Friars for the most amazing selection of modern and old fashioned sweets.

### **Glenridding Sailing Centre, CA11 0PE**

01768 482 541

'The main venue for sailing on Ullswater is the Glenridding Sailing Centre. Charlie used to teach sailing here in the summers and we have had some great days out on the lake at Ullswater.'

The club also offers canoe and kayak hire

[www.glenriddingsailingcentre.co.uk](http://www.glenriddingsailingcentre.co.uk)

# Top things to do with children

---

Our top recommendations for outings with children are below.

## **Honnister Slate Mine, Honister Pass, Borrowdale CA12 5XN and Via Ferrata (the iron way)**

01768 777 230 / 01768 777 714

Get harnessed up for the climb up and through the high caves of slate mines to the crest of the fell. Please book in advance.

## **Llama Karma Kafe Brougham, CA10 2AB**

01768 889 389 / 01768 866 776

Try Llama trekking in the Lake District. Half day treks including picnic lunches or a café meal. Please book in advance.

## **The Rheged Centre, Redhills CA11 0DQ**

01768 868 000

The large screen films are excellent, as well as a collection of shops featuring local produce & restaurants. Indoor soft play area, pottery painting, outdoor playground. Call in advance to check times and activities available.

## **Craft Monkeys Pottery and Crafts Studio, CA11 7PX, 9.8 miles (20 minute drive)**

01768 398 975

A fab way to entertain the family, with plenty to do such as pottery, decopatch, painting, mosaic making, or prints in clay.

## **Eden Rock Climbing Centre, 27.5 miles (37 minute drive)**

01228 522 127

One of the largest indoor bouldering walls in England. Something for everyone, even if you've never tried rock climbing or bouldering before

## **Lakeland Bird of Prey Centre, 12.7 miles (23 minute drive)**

A large collection of birds of prey consisting of hawks, eagles, vultures, owls, falcons and buzzards, with flying demonstrations daily. Visitors get the opportunity to fly a bird at the display and onsite tearoom and local crafts make this an easily enjoyable day out for the family.



# Top places to visit & shop nearby

---

## **Greystoke Castle, CA11 0TG, 14.7 miles (28 minute drive)**

01768 483 722

With the castle dating back almost a thousand years, the secluded and tranquil building enjoys stunning views of the mountains of the north-east lakes and the northern Pennines.

[www.greystoke.com](http://www.greystoke.com)

## **Aira Force, 16.4 miles (29 minute drive)**

01768 482 067

A tumbling waterfall drops 65ft and can be reached via a stroll through woodland and landscaped glades. One of the most famous in the Lake District & a must see when in the local area – great starting point for longer walks through Glencoyne Park and Gowbarrow Fell, the walk which inspired William Wordsworth's poem Daffodils.

[www.nationaltrust.org.uk/aira-force-and-ullswater](http://www.nationaltrust.org.uk/aira-force-and-ullswater)

## **Gowbarrow Fell, 19.9 miles (34 minute drive)**

Gowbarrow Fell is one of the less obvious Lake District Fells lying above the north western shores of Ullswater. Despite its lack of stature it is a popular place to walk with Aira Force a spectacular waterfall after heavy rain.

[www.walklakes.co.uk/walk\\_39.html](http://www.walklakes.co.uk/walk_39.html)

## **Lacy's Caves, 4.6 miles (10 minute drive)**

Consisting of five man made chambers carved out of the sandstone cliffs directly above the River Eden at Glassonby, just north of the village of Little Salkeld.

[www.english-lakes.com/lacys\\_caves.html](http://www.english-lakes.com/lacys_caves.html)

## **Long Meg and her daughters, 4.7 miles (11 minute drive)**

The stone circle has a diameter of about 350ft, the second biggest in the country. Local legend claims that Long Meg was a witch who with her daughters, was turned to stone for profaning the Sabbath, as they danced wildly on the moor. The circle is supposedly endowed with magic, so that it is impossible to count the same number of stones twice, but if you do then the magic is broken.

[www.visitcumbria.com/evnp/long-meg-and-her-daughters](http://www.visitcumbria.com/evnp/long-meg-and-her-daughters)

## Top places to visit & shop nearby

---

### **Dalemain, 11.8 miles (21 minute drive)**

Home to 'The World's Original Marmalade Awards & Festival', held at the Dalemain House, an impressive Georgian Manor, every year in March.

[www.dalemain.com/index.php](http://www.dalemain.com/index.php)

### **Hutton-in-the-Forest, 15.8 miles (25 minute drive)**

An ancient and historic Cumbrian house. As well as a rich variety of architecture, furnishings and a beautiful garden, there are varied outdoor events during the summer, including the Plant and Food Fair, open air Shakespeare, Potfest in the Park and Horse Trials.

[www.hutton-in-the-forest.co.uk](http://www.hutton-in-the-forest.co.uk)

### **Hadrian's Wall (55 minute drive)**

01434 344 277

A car journey from Melmerby but well worth a day out for the history and amazing archaeology. A good museum, tea room and fun for running around – Vindolanda & Roman Army Museum.

# Useful information

---

## **Tortree Hall at a Glance**

### **Bedrooms and Bathrooms**

- Sleeps 22 guests
- 18 guests in Tortree Hall
- Four guests in Tortree Cottage
- Tortree Hall has nine bedrooms, seven double bedrooms and two triple bedrooms
- Tortree Cottage has one double bedroom and one double zip and link bedroom
- Tortree Hall has eight en suite bathrooms and one family bathroom
- Tortree Cottage has two en suite bathrooms

### **Cooking and Dining**

- Formal dining room seating 24 guests
- Breakfast dining area adjoining kitchen
- Four oven Aga, a gas hob and electric oven, a dishwasher, washing machine, tumble dryer
- Two large American fridge/freezers, microwave
- Weber BBQ and equipment
- 2 minute walk to award winning bakery and village shop

### **Children Welcome**

- Cots available
- High chairs available

### **Where We Are**

- The Postcode is CA10 1HB
- In the village of Melmerby in the Eden Valley, close to the Lake District and North Pennines
- The nearest train station is Penrith, a 20 minute drive
- 12 miles to Ullswater
- The nearest airport is Carlisle, a 50 minute drive
- Taxis available
- Plenty of parking available

### **Things to Do Inside**

- 42" TV
- DVD player
- Stereo
- iPod dock
- Wi-Fi
- Games Room with Snooker Table

### **Things to Do Outside**

- Extensive walled garden
- 20 acres of grounds and great walks nearby
- Stunning walk up the Pennine Fells starting from the front door

# Useful information

---

## Activities

- Sail, canoe and kayak at Glenridding Sailing Centre, Ullswater
- Country pursuits available including clay pigeon shooting
- Quad biking
- Horse riding
- Cycle hire for the Coast 2 Coast route
- Pampering and beauty treatments at the house

## Top Things to Do for Children

- Play snooker with your friends
- Bring your wellies for the River Eden stream running through the grounds
- Go kayaking at Ullswater Lake
- Be creative at Crafty Monkeys pottery and crafts studio
- Go Pony trekking
- Cycle a woodland trail
- Visit Eden climbing centre

## Payment Process

- We take a one third deposit at the time of booking
- The balance is due three months before the date booked

## Cautionary Deposit

- £1,000 refundable deposit

## House Restrictions

- Dog friendly. Up to two well behaved dogs allowed
- Not suitable for stag parties
- Hen parties welcome

## Arrival and Departure

- Week or Weekend bookings begin on Friday or Saturday
- Check in 4pm
- Check out 4pm on a Sunday
- Check out 10am on other days

## What's Included

- Linen
- Towels
- Essentials
- Utilities

# Guest Reviews

---

“Beautiful, clean facilities within the property, especially the kitchen/dining area where attention to detail was obvious! Spent alot of our vacation here as it felt so comfortable - a typical home from home feeling! Wouldn't think twice about returning here, in fact, we have already booked our next return trip. Looking forward to it!!” -

**Barbara**

“If you are looking for an amazing place for a large group of friends and family, I would highly recommend Tortree Hall. The accommodation is absolutely 5\*\*\*\*\*. There are so many different rooms to hang out in, the kids can play pool upstairs, while the adults can hang out in the big living room and there are quiet rooms for reading by the fire. The beds are very comfortable and every room is so beautifully furnished.” - **Mary**

“The refurbishment has added a new and spectacular dimension to Tortree Hall and the kitchen and conservatory make a wonderful gathering place. The grounds are wonderfully kept and the setting is almost perfect. Overall a great weekend and cannot wait to go back.” - **Martin**