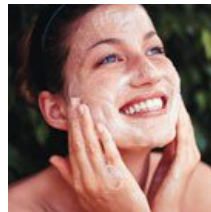
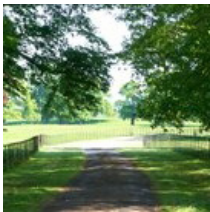


**kate & tom's**

Extraordinary holidays, celebrations & adventures



## Enjoying your stay at Villa Judapa

Everything you need to get the most out of your stay

# Contents

---

Arrival . . . . .	.3
<i>Where We Are</i> . . . . .	3
<i>Check in and check out</i> . . . . .	3
Cooking & dining - chef services. . . . .	.5
Cooking & dining - great places to eat & drink . . . . .	.6
Cooking & Dining - Shopping for Food . . . . .	.8
Things to do - activities and pampering . . . . .	.9
Top things to do with children. . . . .	11
Useful information . . . . .	13

# Arrival

---

## Where we are

Property Name: Villa Judapa  
Address: Marine Villa  
33 Littlestairs Road, Shanklin  
County: Isle of Wight  
Postcode: PO37 6HS

## Check in and check out

Contact name for check in:  
Contact number for check in:  
Check in time: 4pm (Strictly no earlier\*)

*\*Please note that guests will not be permitted before 4pm. If you are early, we suggest you go to Sandown, about 4 miles away and have a wander around, or find somewhere nice for a late lunch.*

Check out time for 2 night weekend booking: 10am Sunday  
Check out time for 3 night weekend booking: 10am Monday  
Check out time for 7 night week bookings: 10am Friday

*Should you leave later than 10am, you'll be expected to pay £100 an hour to cover the cleaner's overtime and pay for the impact caused for the next guests checking in.*

# Arrival

---

## Getting To Us

The best postcode to use with satnav is: PO37 6HS  
Nearest train station and distance: Shanklin Railway Station, 15 minute walk  
The nearest airport is: Southampton Airport, under 2 hour drive

Taxis are available: **Akar Taxis**  
01983 401233 [www.akartaxis.co.uk](http://www.akartaxis.co.uk)

## Directions to Villa Judapa

*There is plenty of off-road parking for cars.*

For ferries contact either Wightlink or Red Funnel. The closest car ferry is Portsmouth to Fishbourne, but you can also go Southampton to Cowes or Lymington to Yarmouth. Please text Sara when you are on the ferry over. If you wish to do some shopping for groceries there is a Waitrose by one of the ferry terminals. You will also pass a large Sainsbury's and Tesco on route.

When you leave the ferry terminal, follow signs to Sandown, then follow the A3055 to Shanklin, passing over a railway bridge. When you spot the speed camera on the left and Wiltons Garage to the right, turn left up Littlestairs Rd. Look out for the green tiled roof – this is Villa Judapa [Marine Villa].

If you are travelling via train the best station to get off at is Shanklin train station. It is about a 15 minute walk from Villa Judapa.

If you want to travel to the Isle of Wight by hovercraft then you're in luck, because Hover Travel offer trips from Portsmouth (Southsea) to Ryde, about 10 miles from Villa Judapa. From Ryde you can either get the bus, train or taxi to Shanklin. More information about hover travel can be found on this website: [www.hovertravel.co.uk](http://www.hovertravel.co.uk)

# Cooking & dining - chef services

---

You'll find our top recommendations below. If you do discover any other gems please do let us know and we will share them with other guests visiting the property.

## **Professional caterers**

The owners of the Villa Judapa work with 3 approved caterers who will either come to the house and prepare meals for guests or else will pre-prepare meals for you, deliver them so you can heat and serve yourselves. They even have a vintage style cream tea service with vintage crockery that can be ordered. Menus and prices can be provided for all of these. Please note that other commercial companies are not allowed at Villa Judapa without prior approval and proof of insurance cover.

Clean laundered table cloths to each guest party is provided. There are plenty of table mats and serving dishes/utensils (located in kitchen) and even hot plates in the dresser. Please note it is illegal to use candles at Villa Judapa, so please do not use candles or have any other naked flames anywhere in the house.

# Cooking & dining - great places to eat & drink

---

## Nearest pubs

**The Steamer Inn**, 18 Esplanade, Shanklin PO37 6BS - 1 mile away

01983 862641 [www.thesteamer.co.uk](http://www.thesteamer.co.uk)

Open all day, the Steamer is a nautical-themed bar with a lovely atmosphere and enjoyable food. Enjoy live music most weekends, with fine sea views from the covered floodlit terrace.

**Fisherman's Cottage**, 1 Esplanade, Shanklin PO37 6BN - 1 mile away

01983 863882 [www.shanklinchine.co.uk/fishermans\\_cottage.php](http://www.shanklinchine.co.uk/fishermans_cottage.php)

Thatched cottage in a perfect spot tucked away off Appley Beach. This pub offers good value pub food and Island and Yates beers.

## Restaurants

**The Pond Café**, Bonchurch Village Road, Ventnor PO38 1RG - 4 miles

01983 855666 [www.thehambrough.com/the-pond-cafe](http://www.thehambrough.com/the-pond-cafe)

Warm village venue offering a rustic Italian-influenced menu. The food is delicious and served throughout the day either as a la carte or light lunch.

**Hillside Bistro**, 30 Pier Street, Ventnor PO38 1SX - 5 miles

01983 853334 [www.hillsideventnor.co.uk/to-eat](http://www.hillsideventnor.co.uk/to-eat)

A bright seaside café in the heart of Ventnor making good use of local produce. See, hear and smell what's going on in the open kitchen serving traditional bistro style dishes.

**The Hambrough**, Hambrough Road, Ventnor PO38 1SQ - 5 miles

01983 856333 [www.thehambrough.com](http://www.thehambrough.com)

Relax and unwind with amazing sea views off the South Coast, Zeitgeist boutique cookery and an extensive wine list.

**The Crab Shed**, Tamarisk, Love Lane, Steephill Cove PO38 1AF - 6 miles

01983 855819 [www.steePhillcove-isleofwight.co.uk/crab\\_shed.html](http://www.steePhillcove-isleofwight.co.uk/crab_shed.html)

Alfresco café with super-fresh Seafood. Cash only. Steephill Cove is one of the most secluded and picturesque coastal areas of the Isle of White. Its tiny, sandy beach is fringed by buildings that range from stone cottages to rickety-looking shacks.

## Takeaways

**Dragon Pearl**, 43 Atherley Road, Shanklin PO37 7AU - 0.5 mile

01983 862687 [www.dragonpearliow.co.uk](http://www.dragonpearliow.co.uk)

**Jasmin Indian Cuisine**, 7 Regent Street, Shanklin PO37 7AF - 1 mile

01983 863729

# Cooking & dining - shopping for food

---

## **Best local supermarket**

Co-operative Food, Landguard Road, Shanklin PO37 7JR - 1 mile

## **Larger supermarkets**

Morrisons, Newport Road, Sandown PO36 9PA - 1.5 miles

Lidl, Landguard Manor Road, Shanklin PO37 7HZ - 1 mile

Waitrose, Well Road, East Cowes PO32 6SP - 12.5 miles

## **Wine merchant**

The Island Wine Co, 16 Pier Street, Ventnor PO38 1ST - 5 miles

Majestic Wine, Unit 1, The Minghella Centre, High Street, Wootton Bridge PO33 4PL - 9.5 miles

## **Major supermarket online orders**

Waitrose

[www.waitrose.com](http://www.waitrose.com)

Tesco

[www.tesco.com](http://www.tesco.com)

*We recommend you get a supermarket grocery delivery arranged timed for shortly after you arrive.*

# Things to do - activities and pampering

---

Our top recommendations for activities and pampering are below.

Shanklin is one of the Isle of Wight's most well-loved spots, and home to a plethora of activities and attractions that will keep you entertained and active during your visit. Our top recommendations for activities and pampering are below.

## Horse riding

Hundreds of bridleways and car-less pathways criss-cross the island, making it ideal for horse riding. Lessons, short and day long hacks on the beach are available for both beginners and experienced riders at:

**Sally's Riding School**, Bantry House/Ducie Avenue, Bembridge PO35 5NE - 7 miles  
01983 872260 [www.sallysridingschool.com](http://www.sallysridingschool.com)

## Fishing

Coarse fishing and deep sea fishing is available on the Isle of Wight. **Alverstone Ponds** has three ponds with mirror, common, crucians, chub, tench, bream and perch. If you want to take a chartered boat onto the open water then **Cachalot Charters** offer a fully licensed, 12-person boat that can take you out along the coast in search of mackerel on a 2, 4, 6 or 8 hour trip.

**Alverstone Ponds**, Corrie Bank, Main Road, Sandown PO36 0HA - 3 miles  
01983 403934 or 07779 517171 [www.alverstoneponds.co.uk](http://www.alverstoneponds.co.uk)

**Cachalot Charters**, Seymour Pl, Bembridge PO35 5NW - 7 miles  
01983 874100 or 07974 179310 [www.cachalot-charters.co.uk](http://www.cachalot-charters.co.uk)

## Golf

**Shanklin & Sandown** is probably the Isle of Wight's best course: superb Championship parkland course set at 6,044 yards following gentle undulations and nestling in between pretty trees.

**Shanklin & Sandown Golf Club**, Fairway, Lake, Sandown, Isle of Wight PO36 9PR - 2 miles  
01983 403217 [www.ssgolfclub.com](http://www.ssgolfclub.com)

## Water sports

The Isle of Wight's mild climate and sunny weather (it routinely ranks among the warmest and sunniest places in the UK) makes conditions perfect for water sports. At **Wight Water** you can go kayaking, canoeing, surfing, bodyboarding, windsurfing, and hire out dinghies and catamarans.

**Wight Water Adventure Water Sports**, Dunroamin Beach, Shanklin PO37 6HU - 3 minute walk  
01983 404987 [www.wightwaters.com](http://www.wightwaters.com)



# Things to do - activities and pampering

---

## Cycling

With over 500 miles of trails plus the iconic 65-mile 'Taste Round the Island' route to enjoy, the Isle of Wight offers some of the best cycling you will ever find (indeed, it's listed No. 1 on Lonely Planet's 'Top Ten Cycling Trips in the World'). If you fancy chilling out, **Blackman Powerbikes** have a fleet of excellent electric mountain bikes which give you a much needed boost up some of the hills. You can also travel much further on these bikes than normal, so we do recommend you try these out if you want to explore the island. For conventional bikes **Wight Cycle Hire** can deliver fresh Dawes bikes to your door for a fee. For more information about the various trails on the Isle of Wight visit [www.visitisleofwight.co.uk/bicycle-island](http://www.visitisleofwight.co.uk/bicycle-island)

**Blackman Powerbikes**, 6 Lake Industrial Way, Sandown PO36 9PL - 1.5 miles  
01983 407049 [www.blackmanpowerbikes.co.uk](http://www.blackmanpowerbikes.co.uk)

**Wight Cycle Hire**, Yarmouth Station, Station Rd, Yarmouth PO41 0QT - 19 miles  
01983 761800 [www.wightcyclehire.co.uk](http://www.wightcyclehire.co.uk)

## Tree climbing

**Goodleaf Tree Climbing**, Garden Walk, Ryde PO33 1ND - 8 miles  
0333 800 1188 [www.goodleaf.co.uk](http://www.goodleaf.co.uk)

Started by the passionate climber, Paul McCathie, who originally hails from New Zealand, Goodleaf is a great way to climb trees safely.

## Paragliding

For much of the year the Isle of Wight is graced with lovely weather and reliable winds, which means it's one of the best places to go paragliding in the UK. **Butterfly Paragliding** in Chale is a great place to take to the skies. Attached to an experienced instructor, you will glide over dramatic cliffs and velvety green meadows.

**Butterfly Paragliding**, The Terrace, Ventnor PO38 - 10 miles  
01983 731611 or 07840 491981 [www.paraglide.uk.com](http://www.paraglide.uk.com)

## Pampering

For pampering in the comfort of your property, there is a range of treatments available from a local therapist including massage, pedicure, manicure, etc. Please book well in advance.

Please enquire via My Personal Sanctuary ([www.mypersonalsanctuary.co.uk](http://www.mypersonalsanctuary.co.uk)) via telephone number 01625 540 557 or email [enquiries@mypersonalsanctuary.co.uk](mailto:enquiries@mypersonalsanctuary.co.uk).

# Top things to do with children

---

Our top recommendations for outings with children are below.

**Blackgang Chine**, Isle of Wight PO38 2HN - 10 miles

01983 730330 [www.blackgangchine.com](http://www.blackgangchine.com)

An eclectic amusement park packed with rides, slides, attractions, dinosaurs and pirates!

**West Wight Alpacas**, Wellow Alpaca Stud, Main Rd, Yarmouth PO41 0SU - 17.5 miles

01983 760900 [www.westwightalpacas.co.uk](http://www.westwightalpacas.co.uk)

Friendly alpaca and llama farm, where you can go for walks and treks around the farm or out in the countryside. Children must be over the age of 12 to walk the llamas.

**Amazon World Zoo**, Watery Lane, Newchurch, Sandown PO36 0LX - 3.5 miles

01983 867122 [www.amazonworld.co.uk](http://www.amazonworld.co.uk)

A zoo park with over 200 species of the world's most unusual, rarest and endangered creatures. The zoo also provides lots of interesting conservation information about the ways in which we can protect these beautiful animals.

**Seaview Wildlife Encounter**, Oakhill Road, Seaview PO34 5AP - 7.5 miles

01983 612153 [www.seaviewwildlife.com](http://www.seaviewwildlife.com)

Set in peaceful open parkland overlooking the sea, Seaview Wildlife is the best place to make friends with furry creatures. Wallabies, meerkats, penguins, alpacas can all be fed - you can even be a zookeeper for the day!

**Robin Hill Adventure Park**, Robin Hill, Downend PO30 2NU - 6.5 miles

01983 527352 [www.robin-hill.com](http://www.robin-hill.com)

New for 2015 is the 'canopy walk' - a 100m long skywalk that takes you through the tops of an ancient woodland.

**Isle of Wight Donkey Sanctuary**, St John's Rd, Wroxall, Ventnor PO38 3AA - 3.5 miles

01983 852693 [www.iwdonkey-sanctuary.com](http://www.iwdonkey-sanctuary.com)

A safe, permanent home for donkeys which are in need of care and attention, the Donkey Sanctuary is a great place to visit, with events happening throughout the spring and summer months.

# Top places to visit and shop nearby

---

## On your doorstep

**Shanklin Chine**, 3 Chine Hill, Shanklin PO37 6BW - 1 mile

01983 866432 [www.shanklinchine.co.uk](http://www.shanklinchine.co.uk)

Attracting artists and visitors for centuries, this historic gorge, with its dramatic waterfalls and nature trails, is a stunning beauty spot. When you wander through the peaceful setting, take time to just sit, look and listen. The winding woodland, with its steep sides is a magical place for rare plants and enchanting wildlife.

**Shanklin Beach**, Esplanade, Shanklin PO37 - 0.5 miles

Currently holding a Seaside Award, Shanklin beach is one of the Isle of Wight's best known stretches of golden sands. The esplanade has all the traditional British seaside attractions you'd expect, with seaside cafes and traditional beach shops selling everything from newspapers and books to inflatable boats and wetsuits. Where the majestic cliffs tower over the beach at the southernmost end, you will discover the thatched Fisherman's Cottage pub at the foot of Shanklin Chine.

**Shanklin Theatre**, Prospect Road, Shanklin PO37 6AJ - 1 mile

01983 868000 [www.shanklintheatre.com](http://www.shanklintheatre.com)

Located on Prospect Road and open all year round, Shanklin Theatre offers a variety of entertainment, featuring top names from comedy and music.

## Sights

**Ventnor Botanic Garden**, Undercliff Drive, Ventnor PO38 1UL - 6 miles

01983 855397 [www.botanic.co.uk](http://www.botanic.co.uk)

All ages and generations of the family can spend quality time together exploring or relaxing in the beauty and tranquility of the Garden. Ventnor Botanic Garden lies at the heart of a remarkable microclimate on the south coast of the Isle of Wight. Protected by the chalk downs of the Ventnor Undercliff, it boasts an impressive collection of rare, subtropical and exotic plants.

**Brading Roman Villa**, Morton Old Road, Brading PO36 0EN - 3 miles

01983 406223 [www.bradingromanvilla.org.uk](http://www.bradingromanvilla.org.uk)

Explore the exquisitely preserved mosaics of this Romano-British site, with wooden walkways leading you over rubble walls and brightly painted tiles to view the ruins below.

**St Helens Duver**, St Helens PO33 1XY - 7 miles

01983 741020 [www.nationaltrust.org.uk/st-helens-duver](http://www.nationaltrust.org.uk/st-helens-duver)

A sand-and-shingle National Trust spit bordering the mouth of the River Yar.

**Bembridge Windmill**, High Street, Bembridge PO35 5SQ - 6.5 miles

01983 873945 [www.nationaltrust.org.uk/bembridge-windmill](http://www.nationaltrust.org.uk/bembridge-windmill)

One of the Isle of Wight's most unique attractions as it's the last windmill on the island. Now owned by the National Trust, the pretty landmark is a Grade I listed building. The windmill dates back to around 1700, and although it hasn't actually been used since 1913, visitors are welcome to make their way to the top of the mill and discover how it works. You'll need to complete a bit of a climb and then the tour takes place over the four floors as you make your way back down, so a visit is a great experience as long as you're feeling energetic!

## Things to do - activities and pampering

---

**Waltzing Waters**, Brading Road, Ryde PO33 1QS - 6 miles

01983 811333 [www.waltzingwaters.co.uk](http://www.waltzingwaters.co.uk)

Waltzing Waters is an indoor show that combines water fountains, lights and music to create a spectacle for all ages. Water twists and twirls in all directions as it's cleverly illuminated with coloured lights, and each show lasts for 40 dazzling minutes. The indoor theatre means this is a great attraction for a rainy day, and there are shows on the hour throughout the day.

**St. Catherine's Lighthouse**, Niton Undercliffe - 10 miles

01983 730284

Just a few miles from Ventnor, St Catherine's Lighthouse is an iconic Isle of Wight attraction. Built in 1838, tours of the lighthouse are a fascinating chance to learn more about its long history.

**Carisbrooke Castle**, Castle Hill, Newport PO30 1XY - 10.5 miles

01983 522107 [carisbrookecastlemuseum.org.uk](http://carisbrookecastlemuseum.org.uk)

Carisbrooke Castle has stood for more than 800 years, and when King Charles I was imprisoned within its walls its place in the history books was secured. Owned by English Heritage, the castle is great fun for all ages and the resident donkeys are always pleased to see friendly faces.

**Newport Roman Villa**, Cypress Road, Newport PO30 1HA - 9 miles

01983 823828

The Newport Roman Villa is open between April and November each year, and this unique attraction dates back more than 1700 years. The villa was probably a farmhouse and is thought to date back to 280 AD, and today it's a Scheduled Ancient Monument of huge national importance.

# Useful information

---

## **Villa Judapa at a glance:**

### **Bedrooms and Bathrooms**

- Sleeps up to 20, please note that the house is only suitable for 14 adults and six children
- Six bedrooms, of which two have an ensuite bath or shower room
- Large lounge with two day beds
- Five double beds,
- Five bathrooms

### **Cooking and Dining**

- Dining table seats up to 22 guests
- Fantastic chef available for a special meal or throughout the weekend
- Drop-off meals available
- BBQ
- Table and chairs on terrace

### **Where We Are**

- The post code is PO37 6HS
- Isle of Wight
- The nearest train station is Shanklin, a three minute drive
- The nearest airport is Bournemouth
- Plenty of parking available

### **Things to Do Inside**

- TV with Freeview
- DVD Player
- Wi-fi
- Games room

### **Things to Do Outside**

- Large garden with uninterrupted sea views

### **Activities**

- Cycling
- Golf

### **Top Things to Do for Children**

- Isle of Wight zoo
- Dinosaur Isle
- Steephill Cove

### **Payment Process**

- We take a one third deposit at the time of booking
- The balance is due three months before the date booked

# Useful information

---

## **Cautionary Deposit**

- £750 refundable deposit

## **House Restrictions**

- No pets allowed
- Noise policy in place
- No fireworks please
- Not suitable for hen or stag parties

## **Arrival and Departure**

- Check in 4pm
- Check out 10am

## **What's included**

- Linen
- Towels
- Essentials
- Utilities
- Wheelchair access