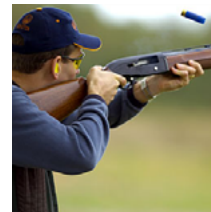
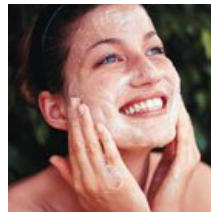
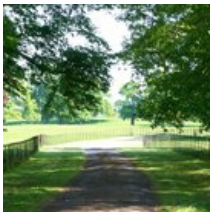


kate & tom's

Extraordinary holidays, celebrations & adventures



Enjoying your stay at Winchelsea Cabin

Everything you need to get the most out of your stay

Contents

Arrival3
<i>Where We Are</i>	3
<i>Check in and check out</i>	3
Cooking & dining - chef services.5
Cooking & dining - great places to eat & drink6
Cooking & Dining - Shopping for Food8
Things to do - activities and pampering9
Top things to do with children.	11
Useful information	12
Guest Reviews	15

Arrival

Where We Are

Property Name: Winchelsea Cabin
Address: Wynchelse
Old River Way
Winchelsea Beach
County: East Sussex
Postcode: TN36 4LJ

Check in and check out

Check in time: 4pm
Check out time for 2 night weekend booking: 10am Sunday
Check out time for 3 night weekend booking: 10am Monday
Check out time for 7 night week bookings: 10am Friday
Emergency contact: 01797 344 077

Arrival

Getting to us

The best postcode to use with satnav is:	TN36 4LJ
Nearest train station and distance:	Winchelsea (1 mile)
The nearest airports are:	Lydd Airport (17 miles) London Gatwick (66 miles)
Taxis available:	Rye Taxis www.ryetaxisonline.co.uk Tel: 01797 224016

Directions

When you leave Rye down the A259 towards Hastings you will come to Winchelsea Beach turn left into Sea Road opposite the caravan sales, go past Suttons fish store on the left and round a sharp right hand bend then look out for a house on the left called Rameslie (theres fields on the right) and after that house its the 4th entrance on the left down a dirt track there is a sign on the left of the track as you turn in saying Old River Way at the end of the track turn left and first house on right is Wynchelse.

Cooking & dining - chef services

You'll find our top recommendations below. If you do discover any other gems please do let us know and we will share them with other guests visiting the property.

Chef Services

Juliet's Catering

01797 270347

food@julietscatering.co.uk

www.julietscatering.co.uk

Over 15 years of experience, Juliet can rustle up a fabulous bespoke meal for you and your friends during your stay.

Local produce that the area is renowned for

There's a traditional folk rhyme that names the 'seven great things of Sussex' - these are: Pulborough eel, Selsey cockle, Chichester lobster, Rye herring, Arundel mullet, Alberley trout and Bourne wheatear. While nowadays it may be more difficult to grab your hands on some of these delicacies, Sussex is home to many other culinary delights that you can get at the local shop, pub and restaurant, such as the Sussex Pond Pudding, the original banoffee pie (invented in 1973), and some top-class beer. Sussex also has the most amount of vineyards in the UK. Furthermore, to solidify its status as UK's premier wine region Sussex won in 2006 the Best Sparkling Wine in the World at the Decanter World Wine Awards.

Cooking & dining - great places to eat & drink

Nearest pub

The Ship Inn, 0.5 miles

Sea Road, Winchelsea, East Sussex, TN36 4LH
01797 226 767
www.shipwinchelseabeach.com/

Minutes from the sea and surrounded by miles of beautiful countryside. Beautifully landscaped gardens.

Pubs

Ypres Castle Inn, 3 miles

Gungarden, Rye, East Sussex TN31 7HH
01797 223248
www.yprescastleinn.co.uk/

Known locally as 'The Wipers', nestled beneath the ramparts of the Ypres Tower.

The Smuggler Inn, 3 miles

Pett Level, Hastings, East Sussex, TN35 4EH
01424 813 491

Warm and friendly atmosphere, oak beams and open fires. Garden and children's play area.

The Queen's Head Inn, 3 miles

19 Landgate, Rye, East Sussex TN31 7LH
01797 222181

Fresh, home cooked food and excellent choice of ales.

The Royal Oak, 4 miles

Pett Rd, Hastings, East Sussex TN35 4HG
01424 812515
www.royaloakpett.com/

The Two Sawyers, 5 miles

Pett Rd, Hastings, East Sussex TN35 4HB
01424 812255
www.twosawyers.co.uk/

Cooking & dining - great places to eat & drink

Restaurants

Fletchers House Tea Rooms & Restaurant, 3 miles

2 Lion Street, Rye, East Sussex, TN31 7LB

01797 222 227

www.fletchershouse.co.uk/

You will receive a warm welcome at Fletcher's House, which is situated right in front of St Mary's Church in the Citadel of Rye and was once home to Jacobean playwright John Fletcher. Sit by glowing log fires in the winter or enjoy the attractive terrace garden in the summer - away from the bustle of the town.

Webbe's at The Fish Café, 3 miles

17 Tower St, Rye, East Sussex, TN31 7AT

01797 222210

www.webbesrestaurants.co.uk/the-fish-cafe/

Ground-floor brasserie with an open kitchen and a lively vibe, serving local fish & seafood.

Ambrette Restaurant, 3.5 miles

24 High Street, Rye, TN31 7JF

01797 222043

www.theambrette.co.uk/

Multi award winning exotic fine dining cuisine, using fresh and locally sourced ingredients

The Plough, 3.5 miles

Udimore Rd, Rye, East Sussex, TN31 6AL

01797 223381

A charming 17th Century pub offering deliciously different local food band Tapas from the local farms and fishing fleet.

Best places to eat out with children

Careys Beef & Steak Bar, 3 miles

Strand, Rye, East Sussex TN31 7DB

01797 224783

Family friendly restaurant with attentive and friendly staff.

Best Takeaways

Rye Grill, 3 miles

Crownfields/Station Approach, Rye, TN31 7AB

01797 222977

Cooking & Dining - Shopping for Food

Best local supermarket

The Co-operative Food, 0.5 miles

Sea Rd, Winchelsea, TN36 4NA

www.co-operativefood.co.uk/welcome/

Jempson's, 3 miles

Crownfields, Station Approach, Rye, East Sussex, TN31 7AF

01797 226044

www.jempsons.com/

Greengrocers

Rye fruit and veg co ltd, 3 miles

Workhouse Ln, Rye, East Sussex, TN36 4BJ

Williams D & Sons, 3 miles

46 Cinque Ports St, Rye, East Sussex, TN31 7AN

01797 22219

Butcher

Winchelsea Farm Kitchen, 1 mile

High St, Winchelsea, Sussex, TN36 4EA

01797 226287

www.winchelseafarmkitchen.co.uk/

Wine Merchant

Olde Worlde Wines, 3 miles

56 Cinque Ports St, Rye, East Sussex, TN31 7AN

01797 229440

www.oldeworldwines.co.uk/

Fantastic selection of wines and sample their wine of the day

Major supermarket online orders

The Co-operative Food

www.co-operativefood.co.uk/welcome/

Things to do - activities and pampering

Our top recommendations for activities and pampering are below.

Quad biking

Quad Nation, 12 miles
Telham La, Battle, TN33 0SL
0844 745 5007
www.quadnation.co.uk/

Horse riding

Grove Farm, 5.5 miles
Grove Ln
Iden
Rye, East Sussex TN31 7PX
01797 280362

Hyfield Stables, 13 miles
Swainham La, St Leonards-on-sea, TN38 8ED
01424 830416
www.hyfieldstables.co.uk/

Watersports

Rye Watersports, 5 miles
Northpoint Water, New Lydd Road, East Sussex TN31 7QS
01797 225238
www.ryewatersports.co.uk/

Long established teaching centre for water sports such as Kitesurfing, Windsurfing, Dinghy Sailing and Stand Up Paddleboarding

Camber Kitesurfing, 7 miles
24 Denham Way, Camber, Rye, TN31 7XP
07960 587482
www.camberkitesurf.com/

Learn to Kitesurf, do a kite buggy course or go powerkiting. Perfect for group activities

Things to do - activities and pampering

Golf

Beauport Park Golf Course, 10.5 miles

Battle Rd, St. Leonards-on-Sea, Hastings, TN37 7BP
01424 854245

Lydd Golf Course & Driving Range, 15.5 miles

Romney Rd, Lydd, Romney Marsh, TN29 9LS
01797 320808
www.lyddgolfclub.co.uk/

Pampering

Bannatyne Spa Hotel Hastings, 10.5 miles

Battle Rd, Hastings, East Sussex, TN38 8EA
01424 851222
www.bannatyne.co.uk/hotel/hastings/

Top things to do with children

Our top recommendations for outings with children are below.

Winchelsea Beach, 1 miles

Just a two minute drive from the house to the beach

Camber Castle, 1.5 miles

www.english-heritage.org.uk/daysout/properties/camber-castle

Historic castle built by Henry VIII. There are monthly guided walks around the Rye Harbour Nature Reserve, including the castle and local farm.

The Blue Reef Aquarium, 8.5 miles

Rock-A-Nore Rd, Hastings, East Sussex, TN34 3DW

01424 718776

www.blureefaquarium.co.uk/hastings/

Hastings Castle and Battlefield

Castle Hill Rd, Hastings, East Sussex, TN34 3QZ

01424 201609

www.smugglersadventure.co.uk/

Useful information

Winchelsea Cabin at a glance

Bedrooms and Bathrooms

- Sleeps up to 10 guests
- Three bedrooms
- One double and one twin room
- One double bunk bed room (sleeping 4)
- One snug with a double sofa bed
- One shared bathroom
- Second WC

Cooking and Dining

- Dining table seats 10 comfortably
- Fantastic chef available for a special meal or throughout the weekend
- Drop-off meals available
- Stainless steel Smeg cooker
- Fridge freezer
- Kettle, toaster and microwave
- Dishwasher
- Coffee maker
- Tables and chairs on terrace
- 5-10 minute walk to a good pub
- Good dining nearby
- Online deliveries

Children Welcome

- Cot available
- High chair available
- The garden is fully fenced, so children can roam freely

Where We Are

- Winchelsea, East Sussex
- The postcode is TN36 4LJ
- The nearest station is Winchelsea, six minutes' drive away
- The nearest airport is London Gatwick
- Taxis available
- Plenty of parking

Things to Do Inside

- TV
- Wi-fi
- DVD player
- Wood burner

Useful information

Things to Do Outside

- Garden
- Veranda
- Terrace

Activities

- Golf
- Clay pigeon shooting
- Horse riding
- Watersports
- Pampering and beauty treatments at the house

Top Things to Do for Children

- Winchelsea Beach
- Camber Castle
- The Blue Reef Aquarium, Hastings
- Hastings Castle and Battlefield

About your Booking

Payment process

- We take a one third deposit at the time of booking
- The balance is due three months before the date booked

Cautionary deposit

- £500 refundable deposit

House restrictions

- Dogs are welcome
- There is a charge of £40 for the first dog, then £10 per extra dog
- If you opt to bring pets, an additional £200 will be added to the security deposit
- Hen parties welcome
- No fireworks please
- Noise policy in place

Arrival and Departure

- Check in 4pm
- Check out 10am

What's included

- Linen
- Towels
- Utilities

Useful information

- Extra housekeeping available on request

Guest Reviews

'This house is certainly the most beautiful I have ever seen. We and our kids (we were two families, totalling four adults and six kids) had a wonderful stay there. The house is beautifully designed and decorated, while remaining very comfortable. Many toys are available (they're hidden of course!)

Let's not forget the great location - about 5 minutes' drive to Rye and the sea. And, last but not least, about 5 minutes' walk from the nearest grocery

This is the perfect place for a stay in South-East England - a stay that you will remember for a very long time' –
Kieren