



WELCOME TO MANGERTON HOUSE

I VERY MUCH HOPE THAT YOU WILL HAVE A RESTFUL STAY WITH US ENJOYING THE FACILITIES OF MANGERTON HOUSE AND THE BEAUTY OF WEST DORSET.

IF YOU HAVE ANY QUERIES AT ALL YOU SHOULD START BY ASKING GEAROID (PRONOUNCED GERODE) OR JENNY WHO ARE AVAILABLE TO MAKE YOUR STAY AS COMFORTABLE AS POSSIBLE. TO REACH THEM YOU AN EITHER KNOCK ON THE DOOR OF THEIR COTTAGE OR TRY THEM ON ONE OF THE FOLLOWING NUMBERS:

GEAROID (07928388351)

JENNY (07525163514)

COTTAGE (01308485592)

YOU CAN ALWAYS SPEAK TO ME (PHIL) ON 07966546765 OR E MAIL ME ON PHILG@WALKERMEDIA.COM

HOPEFULLY THE FOLLOWING PAGES WILL HELP ANSWER MOST IF NOT ALL OF THE OBVIOUS QUESTIONS



BBQ

THERE IS A LARGE GAS BBQ AT THE HOUSE

BEDDING/TOWELS

SHEETS/DUVET COVERS ETC ARE CHANGED AFTER 4 DAYS UNLESS OTHERWISE SPECIFIED. IF YOU WANT FRESH TOWELS PLEASE ASK JENNY AND THEY WILL BE CHANGED.

IF YOU WANT A DAILY ROOM CLEAN AND TURN DOWN SERVICE PLEASE ASK JENNY

BOAT



PLEASE ENQUIRE ABOUT RENTING THE BOAT FOR A HALF DAY OR MORE (FROM £250 SKIPPED BY GEAROID) IT'S 7.55M COBRA RIB WITH A 250 HP OUTBOARD AND CAN COMFORTABLY ACCOMMODATE 8 PEOPLE.

CAMPSITE



DOWN BY THE RIVER WE CAN SET UP A CAMP FOR YOU AND TO PREPARE MEALS ON AN OPEN FIRE AND A HANDMADE PIZZA OVEN..WE'LL ALSO TAKE THE BBQ DOWN THERE FOR YOU . MARSHMALLOWS AT NIGHT TIME ARE A FAVORITE WITH THE KIDS.

COFFEE MACHINE

THE INSTRUCTIONS ARE KEPT ON TOP OF THE MACHINE AND ONCE YOU GET THE HANG OF IT YOU'LL BE FINE....ASK FOR A QUICK DEMO IF YOU DON'T LIKE READING INSTRUCTIONS. THE BEANS CONTAINER WILL NEED REFILLING FAIRLY REGULARLY AS WELL AS THE WATER TANK. FROM TIME TO TIME THE GROUNDS CONTAINER WILL NEED EMPTYING.

COOKERS / MICROWAVE

FAIRLY STRAIGHTFORWARD BUT IF IN DOUBT THERE ARE INSTRUCTIONS FOR THE COOKERS AND THE MICROWAVE IN THE SMALL CUPBOARD IN THE BACK HALL JUST OUTSIDE THE DOOR TO THE KITCHEN.

GYM

THERE IS A TREADMILL, A CROSS TRAINER , A MULTI-GYM AND A BIKE. THEY SHOULD ONLY BE USED IF YOU ARE FAMILIAR WITH THE EQUIPMENT. CHILDREN UNDER THE AGE OF 14 ARE FORBIDDEN FROM USING THE GYM.

HEATING

THE HEATING IS GENERATED BY COMBINATION OF AIR SOURCE, SOLAR PANELS, WOOD FUEL & NATURAL GAS. THERE ARE 4500 LITRES OF HOT WATER BETWEEN 2 STORAGE TANKS SO YOU SHOULDN'T RUN OUT OF WATER BUT IT ISN'T COSTING THE EARTH!

THERE ARE PORTABLE THERMOSTATS IN EACH ROOM WHICH CAN BE SET TO YOUR DESIRED TEMPERATURE. THE TOWEL RAILS ARE ON A TIMER...DOWNSTAIRS WE HAVE RADIATORS AND UNDER FLOOR HEATING, UPSTAIRS JUST RADIATORS IN THE BEDROOMS BUT UNDER FLOOR HEATING IN THE BATHROOMS. WE'LL SET EVERYTHING UP AS WE WOULD LIKE IT BUT SHOUT IF IT ISN'T RESPONDING TO YOUR ADJUSTMENTS OR IF YOU HAVE ANY PROBLEMS.



ICE

THE FREEZER IN THE KITCHEN HAS AN ICE MAKING FACILITY.

KITCHEN GARDEN

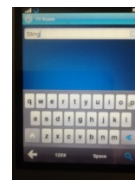
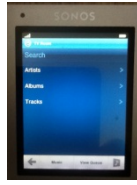
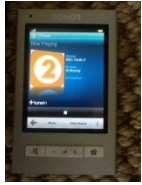
IN THE SPRING AND SUMMER THE GARDEN PRODUCES A WHOLE VARIETY OF LOVELY PRODUCE AND YOU ARE WELCOME TO HELP YOURSELF. ASPARAGUS, LETTUCE, MINI COURGETTES, A RANGE OF BEETROOTS AND TOMATOES, LOADS OF DIFFERENT HERBS AND BERRIES.



MUSIC/RADIO

WE HAVE THE SONOS SYSTEM INSTALLED....THERE ARE SEVERAL CONTROLLERS FOR THE SYSTEM AND IT IS POSSIBLE TO DOWNLOAD THE SONOS CONTROL APP ONTO YOUR SMARTPHONE/I PAD IF YOU WISH.

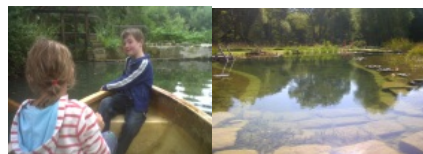
THERE ARE PERMANENT UNITS SERVING THE STUDY/TV ROOM, THE LIVING ROOM, THE KITCHEN , THE MEDIA BARN AND THEN PORTABLE UNITS AVAILABLE FOR SOME OF THE BEDROOMS.



OPERATING IT IS PRETTY INTUITIVE ONCE YOU HAVE PLAYED AROUND WITH IT FOR A FEW MINUTES. MANGERTON HOUSE HAS A SUBSCRIPTION TO NAPSTER WHICH IS THEREFOR ETHE MUSIC SERVICE YOU SHOULD CLICK INTO.

OPEN FIRES

PLEASE FEEL FREE TO USE THE OPEN FIRES...FIRE GUARDS MUST BE USED FOR ANY UNATTENDED FIRES.. THE WOOD BURNER DOORS MUST BE SHUT IF UNATTENDED. LOGS ARE STORED OUTSIDE BY THE BIN STORES.



RIVER

THERE'S A ROWING BOAT, CANOE AND A KAYAK AVAILABLE FOR EXPLORING THE MANGERTON RIVER...IT WON'T GET YOU INTO ANY TROUBLE OR TAKE YOU TOO FAR AWAY...PERFECT WITH OR FOR THE KIDS. YOUNGER CHILDREN MUST BE SUPERVISED AT ALL TIMES NEAR AND ON THE WATER. SOME LIFE PRESERVERS ARE AVAILABLE & SHOULD BE USED BY LESS ABLE SWIMMERS.

THERE ARE BROWN & RAINBOW TROUT TO FISH IN THE RIVER AND WE HAVE ALSO SEEN CRAYFISH BUT THE LOCAL OTTER'S KEEP STOCKS OF BOTH IN CHECK!

STEAM ROOM

THE STEAM ROOM IS OPERATED BY PRESSING THE MIDDLE BUTTON ON THE CONTROL IN THE ROOM ITSELF. THE TEMPERATURE WILL RISE TO C 52 DEGREES AND THE ROOM WILL TAKE ABOUT 5 MINUTES TO SETAM UP. IT WILL CLOSE DOWN AFTER 30 MINUTES .

CHILDREN MAY ONLY USE THE STEAM BATH UNDER CLOSE SUPERVISION OF AN EXPERIENCED ADULT.

STEAM BATHS SHOULD ONLY BE USED UNDER A MEDICAL DOCTORS DIRECTION IF YOU:

ARE PREGNANT
HAVE A HEART CONDITION
HAVE HIGH BLOOD PRESSURE
HAVE CIRCULATORY PROBLEMS
ARE UNDER THE INFLUENCE OF ALCOHOL OR DRUGS
HAVE DIABETES
ARE UNDER THE CARE OF A PHYSICIAN
ARE IN GENERALLY POOR HEALTH

SWIMMING

INDOOR... .. THE INDOOR POOL OPERATES AT A TEMPERATURE OF C 30 DEGREES. PLEASE ENSURE THAT CHILDREN ARE SUPERVISED AT ALL TIMES. THE POOL HAS A CONSTANT DEPTH OF 1150MM AND IS NOT SUITED TO DIVING

THE NATURAL POND... THE NATURAL SWIMMING POND IS A PERFECTLY BALANCED ECOSYSTEM AND THE WATER COMES FROM OUR OWN SPRING. WE ADVISE YOU SWIM WITHIN THE AREA DE-MARKED BY THE SANDBAG BORDER. PLEASE DO NOT STRAY ONTO THE SANDBAGS OR MARGINAL PLANTED AREAS AS THIS WILL DAMAGE THE NATURAL BALANCE REQUIRED TO KEEP THE POOL CLEAN AND HEALTHY. YOU CAN ENTER/EXIT VIA THE STONE STEPS, DECKING STEPS OR STRAIGHT IN FROM THE "DIVING" BOULDER AT THE DEEP-END.

THERE IS AN UNDERGROUND CHANGING FACILITY WITH TOILET & SHOWER BY THE NATURAL POND.

THE MANGERTON RIVER... THERE ARE SEVERAL AREAS OF THE RIVER WHICH ARE SUITABLE FOR A TOTALLY WILD SWIM. HOWEVER THIS WILL BE DETERMINED BY THE OPERATION OF THE NEIGHBOURING MANGERTON MILL SLUICE GATE WHICH IN TURN IS DETERMINED BY CURRENT WEATHER CONDITIONS. DURING MOSTLY DRY WEATHER THE MILL IS OPERATIONAL. THEREFORE RIVER LEVEL IS AT FULL DEPTH AND SLOW FLOWING TO FEED THE MILL-RACE. THE WATER IN THE RIVER IS NOT CLEAR THEREFORE JUMPING IN FROM BRIDGES OR ROPE SWING CAN ONLY OCCUR AFTER A THOROUGH BRIEFING FROM GEARÓID. DO NOT SWIM IN THE RIVER DURING OR SOON AFTER HEAVY RAIN OR ANYTIME THERE IS A NOTICEABLE CURRENT!

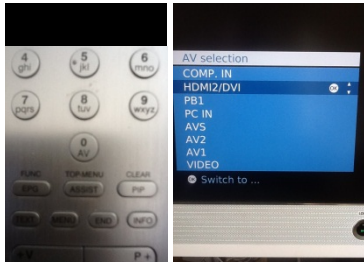
NB*YOU MUST SHOWER BEFORE SWIMMING IN THE NATURAL POND AFTER SWIMMING IN THE RIVER.



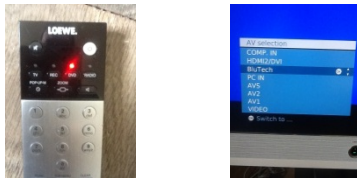
TELEVISION

THE TV IN THE STUDY IS SET UP WITH A BLU RAY DVD AND FULL SKY SUBSCRIPTION .

TO ACCESS THE TV YOU NEED TO HAVE THE SKY BOX TURNED ON AND THE TV NEEDS TO BE SET TO THE HDMI/DVI SETTING (SEE PICTURE BELOW)...YOU ACCESS THE SETTING BY PRESSING THE O BUTTON (WITH AV WRITTEN ON IT)



TO ACCESS DVD THEN PRESS THE DVD BUTTON ON THE TV REMOTE AND SWITCH TO THE BLUTECH SETTING ON THE O BUTTON



THERE IS ALSO A TV IN THE MEDIA BARN AND THIS IS FAIRLY STRAIGHTFORWARD TO ACCESS. WE WILL HAVE IT SET ON THE SKY FUNCTION. IT OPERATES ON A SEPARATE BOX/DISH.



WALKS /BEACH

WE TEND TO DRIVE TO BURTON BRADSTOCK AND THEN WALK WEST OR EAST EITHER ON THE BEACH OR THE CLIFFTOP PATH. WEST TAKES YOU PAST FRESHWATER BAY TO WEST BAY AND THEN BEYOND TO EYPE AND THEN THE GOLDEN CAP AND FINALLY TO SEATOWN. THAT'S A GOOD DAY OUT FOR KEEN WALKERS!

EAST TAKES YOU ALONG THE CHESIL BEACH TO WEST BEXINGTON AND BEYOND.

THE GOLDEN CAP

STUNNING COASTLINE AND ENGLAND'S ONLY NATURAL WORLD HERITAGE SITE

THE GREAT ROCKY SHOULDER OF GOLDEN CAP OFFERS MAGNIFICENT VIEWS AT EVERY COMPASS POINT. ON A CLEAR DAY YOU CAN SEE ACROSS LYME BAY TO DARTMOOR - WELL WORTH THE EFFORT OF THE WALK UPHILL.

STONE BARROW HILL IS A GREAT STARTING POINT FOR 25 MILES OF FOOTPATHS AROUND THE GOLDEN CAP ESTATE. AN OLD RADAR STATION HOUSES A NATIONAL TRUST INFORMATION POINT, SHOP, TOILETS AND A BASECAMP.

DESCEND A STEEP FLIGHT OF STEPS AND DISCOVER ST GABRIEL'S BEACH. THIS STRETCH OF SECLUDED SHINGLE HAS BECOME A HUNTING GROUND FOR JURASSIC COAST FOSSILS AND TRACES ALMOST 185 MILLION YEARS OF THE EARTH'S HISTORY.

AN ALL-ABILITY CIRCULAR TRAIL TAKES YOU THROUGH THE WOODLANDS OF LANGDON HILL WOOD. RICH IN WILDLIFE, THEY ARE HOME TO LARGE NUMBERS OF 'BLUE' BUTTERFLY IN SUMMER AND MANY DIFFERENT FUNGI IN AUTUMN.

FINALLY, HIGH ON THE CLIFFS YOU'LL FIND THE ANCIENT THORNCOMBE BEACON. IT WAS ONE OF A SERIES DOTTED ALONG THE ENGLISH COAST AS PART OF AN EARLY WARNING SYSTEM GUARDING AGAINST FOREIGN INVASION. ENJOY THE SPECTACULAR VIEWS EAST TO BRIDPORT AND CHESIL BEACH.

ALSO SEE THE ATTACHED ARTICLE FROM THE GUARDIAN ONLINE AT:

[HTTP://WWW.GUARDIAN.CO.UK/TRAVEL/2012/SEP/04/TOP-10-WALKS-DORSET?NEWSFEED=TRUE](http://www.guardian.co.uk/travel/2012/sep/04/top-10-walks-dorset?newsfeed=true)

[HTTP://WWW.GUARDIAN.CO.UK/TRAVEL/2012/SEP/04/TOP-10-DAYS-OUT-EAST-DORSET](http://www.guardian.co.uk/travel/2012/sep/04/top-10-days-out-east-dorset)

[HTTP://WWW.GUARDIAN.CO.UK/TRAVEL/2012/SEP/05/TOP-10-DORSET-LIVE-MUSIC-VENUES](http://www.guardian.co.uk/travel/2012/sep/05/top-10-dorset-live-music-venues)



WATER

THE WATER SUPPLY IS OUR OWN FROM THE SPRING IN THE GARDEN

WIRELESS

THE CODE IS 'LETMEIN123'



OTHER INFO

THINGS TO DO...BEST YOU JUST LOG ON AND SEE WHAT TAKES YOUR FANCY:

[HTTP://WWW.WESTDORSET.COM/SITE/THINGS-TO-DO/ATTRACTIONS](http://www.westdorset.com/site/things-to-do/attractions)

[HTTP://WWW.GUARDIAN.CO.UK/TRAVEL/INTERACTIVE/2012/SEP/04/DORSET-UK](http://www.guardian.co.uk/travel/interactive/2012/sep/04/dorset-uk)

PUBS

THE THREE HORSESHOES AT POWERSTOCK DT63TF

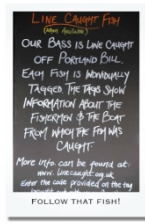
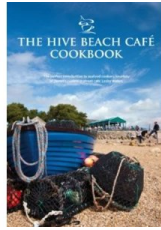
JUST NEAR THE CHURCH, WITH A GARDEN OVERLOOKING THE VALLEY , GOOD FOOD AND FRIENDLY SERVICE.2 MILES/5 MINUTES AWAY

THE MARQUIS OF LORNE AT NETTLECOMBE DT6 3SY

JUST BEYOND THE TURNING TO POWERRSTOCK , FRIENDLY LOCAL WITH A SMALL KIDS PLAYGROUND. 2 MILES/5 MINUTES AWAY.

THE ANCHOR INN AT SEATOWN, DT6 6JU, 01297 489215

PUB RIGHT ON THE BEACH, DOWN SOME NARROW LANES OFF THE ROAD OUT OF BRIDPORT TOWARDS LYME REGIS (A35) 7 MILES/20 MINUTES AWAY.



[HTTP://WWW.GUARDIAN.CO.UK/TRAVEL/2012/JUL/31/TOP-10-DORSET-SEAFOOD-FISH-RESTAURANTS](http://www.guardian.co.uk/travel/2012/jul/31/top-10-dorset-seafood-fish-restaurants)

RESTAURANTS

THE WILD GARLIC, 4 THE SQUARE, BEAMINSTER, DORSET DT8 3AS: +44 (0)1308 861446

RUN BY MAT FOLLAS, A PAST MASTERCHEF CHAMPION... LIKES TO FORAGE FOR INGREDIENTS...PERSONALLY WE HAVE BEEN DISAPPOINTED WITH THE FOOD BUT IT DOES RECEIVE GOOD REVIEWS. 5 MILES/12 MINUTES AWAY.

HIVE BEACH CAFÉ, BEACH ROAD, BURTON BRADSTOCK, NR BRIDPORT, DORSET, DT6 4RF 01308 897070

WINNER OF SEVERAL BEACHSIDE RESTAURANT AWARDS IT DOESN'T EVER DISAPPOINT...YOU MAY HAVE TO WAIT FOR A TABLE...NO BOOKINGS TAKEN AND YOU QUEUE FOR FOOD ORDERING...ON A SUNNY DAY WITH A GLASS OF ROSE THEIR FISH IS THE BEST DORSET HAS TO OFFER. 5.5 MILES / 15 MINUTES AWAY. (AND THEY HAVE JUST OPENED AT WEST BAY ... THE WATCHHOUSE CAFÉ. WELL WORTH A VISIT TOO)

HIX OYSTER AND FISH HOUSE, COBB ROAD, LYME REGIS, DORSET DT7 3JP 01297 446 910

PART OF MARK HIX'S GROWING EMPIRE. HE GREW UP IN WEST BAY AND HE'S 'COME HOME' TO GREAT REVIEWS...GREAT SPOT OVERLOOKING THE COBB...FANTASTIC FISH. KEITH FLOYD HAD HIS LAST MEAL THERE...AND PERHAPS ONE TOO MANY 'HIX FIXES' (CHAMPAGNE COCKTAIL NOT FOR THE FAINT HEARTED!) 14 MILES / 25 MINUTES AWAY.

THE BULL HOTEL/ THE STABLES PIZZA 34 EAST STREET BRIDPORT, DORSET, DT6 3LF 01308 422878

BOUTIQUE HOTEL IN BRIDPORT WITH A COCKTAIL BAR , A RESTAURANT AND A GREAT CASUAL PIZZA PLACE CALLED THE STABLES IN THE COURTYARD AT THE BACK. (01308 426876)

THE TOWN MILL BAKERY 2 COOMBE STREET, LYME REGIS, DORSET, DT7 3PY 01297 444754

GREAT BREAD AND GENERAL BAKING GOODIES PLUS GOOD PLACE FOR QUALITY SNACK ...BUY SOME OF THEIR MUESLI WHEN YOU ARE THERE..YOU WON'T REGRET IT.

THE CRAB HOUSE CAFÉ , FERRYMAN'S WAY PORTLAND ROAD, WYKE REGIS, WEYMOUTH, DORSET DT4 9YU 01305 788867

THIS PLACE IS NOT A RESTAURANT - IT'S A CRAB SHACK - AND IF YOU LIKE IMMACULATELY FRESH SEAFOOD IN A QUIRKY ATMOSPHERE THEN THIS IS THE PLACE TO GO

THE RIVER COTTAGE HQ PARK FARM, TRINITY HILL ROAD, AXMINSTER, EX13 8TB 01297 630300

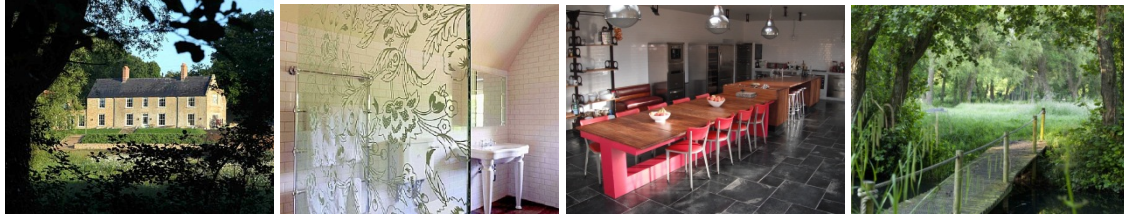
THE HOME OF A RESTAURANT AND VARIOUS COOKERY COURSES....HAVEN'T BEEN OURSELVES BUT IF YOU LIKE HUGH FW THEN IT'S DEFINITELY WORTH A VISIT! 16 MILES/30 MINUTES A WAY.

THE RIVERSIDE RESTAURANT, WEST BAY, BRIDPORT, DORSET, DT6 4EZ 01308422011

A BIT OF AN INSTITUTION IT'S OUTWARD APPEARANCE BELIES THE QUALITY OF THE FOOD WHICH IS CONSISTENTLY EXCELLENT 4 MILES/ 12 MINUTES AWAY.

DOWNHOUSE FARM HIGHER EYPE BRIDPORT DT6 6AH 01308 421232

A GOOD SPOT FOR WHOLESOME FOOD ON YOUR WALK AROUND THE GOLDEN CAP (SEE BELOW)



MANGERTON HOUSE

DESIGNED IN CONJUNCTION WITH JASON MACLEAN

www.macleaninteriors.com

SUPPORTED BY:

www.bowlesandlinares.co.uk

www.eleykishimoto.com

www.retrouvius.com

www.vintageunit.com

www.petershamnurseries.com

www.2mz.co.uk

www.kitchenaid.co.uk

www.bsouthgate.co.uk

